

aapm&r

ANNUAL ASSEMBLY 2016



# PRELIMINARY PROGRAM

Don't miss this year's inspiring plenary session speakers!

- **Dr. Bennet Omalu**, inspiration for the movie *Concussion*
- **James Carville and Mary Matalin**, political commentators
- **William A. Adair, MD**, forty-eighth Walter J. Zeiter lecturer

Register at [www.aapmr.org/assembly](http://www.aapmr.org/assembly) by August 24 for member discounts and early registration rates.



# MOVING

# PHYSIATRY FORWARD

OCTOBER 20-23, 2016 • NEW ORLEANS, LOUISIANA

# MOVING PHYSIA

## FOR YOUR PATIENTS

Cutting-edge clinical education developed with your needs in mind

### 3 Innovative Learning Opportunities:

- ▶ Cancer Rehabilitation Summit: Integration into Practice
- ▶ Interactive Arcade: *REMS Playbook for Opioid Prescribing*
- ▶ Learning Lab: Ultrasound

### 12 Three-hour Intensive Workshops:

- ▶ Regenerative Medicine
- ▶ Spasticity
- ▶ Ultrasound

### 4 Preconference Courses:

- ▶ **NEW!** Medicolegal Work
- ▶ Coding & Reimbursement
- ▶ Regenerative Medicine
- ▶ Ultrasound

### 130 Educational Sessions and Workshops focused on:

- ▶ Cancer Rehabilitation
- ▶ Controversies in Pain Management
- ▶ Frontiers in Neurological Rehabilitation
- ▶ Models of Rehabilitation Care and Advances in Management and Medically-Complex Patients
- ▶ Pain and the Athlete
- ▶ Pediatric Rehabilitation
- ▶ Staying Active Through the Lifespan

As the primary medical society for the specialty of physical medicine and rehabilitation, the Academy is focused on moving the specialty and you forward. And nowhere is that more evident than at our Annual Assembly. We'll be **"Moving Physiatry Forward"** for your patients...for your practice... and for yourself with cutting-edge clinical education, practice-related content, and professional development opportunities.



# PHYSIATRY FORWARD

## FOR YOUR **PRACTICE**

Content, available through the practice track, to lead you through the transitions occurring in the business of health care and to focus on the health of your practice

- ▶ Exploring physiatry's role in population health management
- ▶ Diversifying your practice and creating new revenue opportunities
- ▶ Optimizing physician and health system alignment
- ▶ Navigating quality reporting, Meaningful Use requirements, and the new Medicare payment reform law
- ▶ Increasing vitality and preventing burnout throughout your team

## FOR **YOURSELF**

Resources to help you meet new challenges and build a successful career

- ▶ Job Fair—specially designed for PM&R physicians and hiring organizations
- ▶ Sessions aimed at positioning yourself and your practice for success
- ▶ Networking opportunities to expand your community of peers
- ▶ Learn how to grow your leadership skills and diversify your career
- ▶ Professional development opportunities throughout the event
- ▶ Special programs for medical students and residents

Flip to the inside back page to learn about the extensive changes in physician payment policies that start January 1, 2017.

and help us **MOVE** PHYSIATRY FORWARD!

# **RUSK REHABILITATION**

congratulates the 2016 winners of the

**Rusk Award for Leadership and Innovation in PM&R**

## **Bruce M. Gans, MD**

Executive Vice President and Chief Medical Officer, Kessler Institute for Rehabilitation

**Rusk Rehabilitation Distinguished Alumni Award**

## **Kristjan T. Ragnarsson, MD**

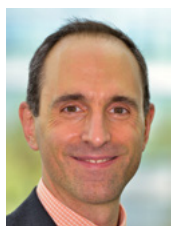
Professor and Chair of Rehabilitation Medicine, Mount Sinai Hospital

Dr. Gans is a pillar of the PM&R community who continues to drive our field forward, and Dr. Ragnarsson is an inspiring leader who has served in his role of chair for 30 years. We are honored to recognize them both at the Rusk Research Symposium being held on June 17 in New York City.

For more information, visit [nyulmc.org/ruskevent](http://nyulmc.org/ruskevent).







I invite you to join your colleagues in the “Big Easy” for the American Academy of Physical Medicine and Rehabilitation (AAPM&R) 2016 Annual Assembly—

**THE largest gathering of physiatrists in the country.**

Our Program Planning Committee has been hard at work developing content to address today’s most pressing

physiatric challenges—navigating the changing health care landscape, successfully running your practice now and into the future, and understanding new care models that pay for performance and quality care... just to name a few!

We have some exciting things in store for 2016, including 4 days of unlimited peer-to-peer networking opportunities, more than 130 educational sessions focused on your clinical and practice needs, and a bustling PM&R Pavilion with more than 175 companies ready to provide solutions to your most complicated cases.

**Moving Physiatry Forward—our theme for 2016—will take center stage in every aspect of the event.** We’ll be *Moving Physiatry Forward* for your patients, for your practice, and for yourself with cutting-edge clinical education, practice-related content, and professional development opportunities. (Please see the first 2 pages for more about this important topic.)

New for 2016, our **Learning Lab: Ultrasound** and **Interactive Arcade: REMS Playbook for Opioid Prescribing**, are 2 examples of innovative learning at its best. The Learning Lab will focus on ultrasound education with mini-sessions, demonstrations, and hands-on learning—come and go as you please! The Interactive Arcade will include multi-media presentations and strategies for the safe use, storage, and disposal of extended-release and long-acting opioids. Both are included in your registration fee. See page 20 for more information.

And don’t forget about **our host city, New Orleans, the jewel of the Gulf Coast** and one of the most exciting cities in which to “stay and play” before or after the Assembly. With a charming blend of history and modern style, there’s plenty to explore! Turn to pages 38–39 to see a sampling of fun activities you can experience in NOLA.

I encourage you to take a moment to explore this publication to see all the Academy has to offer at this year’s meeting. I know you’ll find something that interests you. Remember to register early to take advantage of discounted registration prices and hotel accommodations, and to reserve a seat in our popular limited-attendance workshops.

We look forward to seeing you in October.

**Andre Panagos, MD**

2016 AAPM&R Program Planning Committee Chair

## TABLE OF CONTENTS

Preconference Courses	5
Plenary Sessions	9
Schedule-At-A-Glance	10
Education	20
Networking Activities	26
PM&R Pavilion; Non-Academy Events	30
Corporate Support	34
Non-Academy Activities	36
Hotel and Travel	38
General Information	40
Registration	43



We’re offering a mobile app this year! Visit [www.aapmr.org/assembly](http://www.aapmr.org/assembly) for app details and download instructions.



Look for this logo throughout the guide to learn fun facts about New Orleans.

# Plan Ahead!

## 3 Reasons Why You Should Come Early to the 2016 Assembly

### Preconference Courses

Wednesday, October 19

Jump-start your 2016 Annual Assembly experience by attending one of our exciting 1-day preconference courses! Learn how to diversify your practice with medicolegal work, implement new ultrasound and regenerative medicine techniques into your existing clinical offerings, or get the latest coding and reimbursement information with these 4 preconference courses.

- Seats will fill up fast for these in-demand sessions.
- Registration is required for these 4 courses (additional fees apply).
- Use the form on pages 45–48 or register via the Assembly website at [www.aapmr.org/assembly](http://www.aapmr.org/assembly).

### Job Fair

Wednesday, October 19  
6:30 pm–9 pm

Hilton New Orleans Riverside

Network and find your ideal position at the Job Fair! With more than 100 institutions and practices scheduled to participate, the Job Fair is the largest PM&R-specific recruitment event in the country.

**NEW!** Watch for the Job Fair Show Guide to help you navigate the show floor. See page 26 for more details.



JOB  
FAIR

### NOLA!

New Orleans is many things to many people—a home for the arts, a hub of innovation, an agent of inspiration. It's a city where cultures collide in a brilliant explosion of flavors, emotions, and sounds. It's a place of chefs and delectable cuisine and a unique blend of French, Spanish, Caribbean, and African cultural influences in its architecture, food, people, and music.

Take the historic streetcar down a line of shady oak trees on St. Charles Avenue, stop by a jazz club, and visit an art collection in the Warehouse/Arts District galleries. Because most of the city's restaurants, attractions, tours, accommodations, and event venues are within walking distance of each other, it's easy to get around the "Big Easy" and it's the perfect setting for the 2016 Annual Assembly.

Start planning your trip now!

Check out [www.neworleanscvb.com/aapmr](http://www.neworleanscvb.com/aapmr) for all this lively city has to offer.



# Regenerative Medicine: Current Concepts and Brave New Paradigms in the Treatment of Musculoskeletal Conditions

Wednesday, October 19 | 7:30 am–3 pm

Ernest N. Morial Convention Center



## Regenerative Medicine

This 1-day course is designed for clinicians with a strong interest in integrating regenerative medicine treatments, in particular, stem cell treatments, into their practice. Through didactic instruction, clinicians

will be able to recognize and apply general principles in understanding the current medical evidence for selecting the appropriate regenerative treatment; assess and implement appropriate staffing and equipment to support regenerative treatment; and acquire the basic skill sets to perform stem cell therapies and image-guided injections.

### LEARNING OBJECTIVES

Upon completion of this course, participants will be able to:

- Recognize and apply general principles in choosing the appropriate regenerative treatment for musculoskeletal conditions.
- Explain the basic science of platelet-rich plasma and stem cell therapies in the treatment of degenerative musculoskeletal conditions.
- Define the current FDA position regarding the use of stem cell and platelet-rich plasma therapies and the restrictions in the use of these treatments in clinical practice.
- Explain the current clinical evidence to support the use of platelet-rich plasma and mesenchymal cell treatment.
- Assess and implement appropriate staffing and equipment needs to perform platelet-rich plasma and stem cell therapies.
- Acquire the skills and outline the steps to harvest platelets and stem cells from bone marrow and adipose tissue, including appropriate sterile techniques, proper anesthesia and pain control as well as recognize the risks of these procedures.
- Determine the basic skill set required to perform stem cell therapies, including appropriate history and physical examination, anatomical surface anatomy, and radiographic and ultrasound anatomy.
- Recognize the appropriate skill set needed for performing image (fluoroscopic or ultrasound) guided injections.

### WHO SHOULD ATTEND?

Physicians who wish to advance their knowledge of regenerative treatment options and how to begin to incorporate these treatments into their practice. This course is offered only to doctors of medicine or doctors of osteopathy.

AAPM&R thanks our exhibit sponsor



### ACCREDITATION

The American Academy of Physical Medicine and Rehabilitation is accredited by the Accreditation Council for Continuing Medical Education (ACCME) to provide continuing medical education for physicians.

### DESIGNATION OF CREDIT

The American Academy of Physical Medicine and Rehabilitation designates this live activity for a maximum of 5.75 AMA PRA Category 1 Credits™. Physicians should claim only the credit commensurate with the extent of their participation in the activity.

### LECTURE TOPICS INCLUDE

- Deficiencies in the current treatments for orthopedic conditions
- An overview of regenerative medicine treatments
- Basic science of stem cells in orthopedic conditions
- Safety and regulatory issues regarding the use of stem cells and results from a national database registry
- Evidence for the clinical applications of stem cells in orthopedic conditions
- Technical issues in harvesting and concentrating stem cells
- How to implement regenerative treatments into practice
- FDA guidance update

### Live Streaming



For interested physicians who are unable to travel to New Orleans, AAPM&R is excited to open this precourse to a virtual audience. As a virtual participant, you will see and hear the lecture live, receive all course materials, participate in Q&A portions of the agenda, and receive a complete recording of the precourse. Registration and complete details will be available this summer.

\*Faculty and content subject to change.

To view a complete agenda, visit [www.aapmr.org/assembly](http://www.aapmr.org/assembly).

## Coding & Reimbursement: Avoiding Audits and Denials

Wednesday, October 19 | 8 am–5:45 pm

Hilton New Orleans Riverside

SCOTT HORN, DO (Course Director)



This PM&R-specific, 1-day course is designed to educate physiatrists, physicians' office managers, and procedural coders about the latest coding and billing issues that have an effect on PM&R practices. The

morning session will focus on correct coding of services and procedures to assist practices in securing appropriate reimbursement for physician and practice services from third-party payers and others. Registrants may select an afternoon breakout session to attend at the time of registering for the course. You have the choice of learning more about **Advanced Coding for the Interventionalist** or **Advanced Coding for the Post-Acute Care Setting**.

If you are not able to attend the morning session, you may join us for one of the afternoon breakout sessions (registration is required).

### LEARNING OBJECTIVES

Upon completion of this course, participants will be able to:

- Effectively incorporate 2016 CPT® coding guidelines into practice.
- Integrate documentation requirements into progress notes and accurately assign E/M levels for inpatient, outpatient, and nursing facility patient encounters.
- Gain the knowledge to append modifiers to cases involving E/M services and multiple, bilateral, and bundled procedures, when applicable.
- Review guidelines and documentation requirements for non-physician practitioner (NPP) billing.
- Understand when to report an E/M service with injections and other therapeutic procedures with the appropriate modifier.
- Introduction to ICD-10's impact on practice with specific tactics on dealing with implementation.
- Understand proper coding and documentation for the post-acute setting.
- Understand proper coding and documentation for skilled nursing facilities (SNFs) and inpatient rehabilitation facilities (IRFs).
- Distinguish and apply codes for electromyography and nerve conduction studies, autonomic nerve testing, evoked potentials, and other office-based procedures.
- Apply techniques for accurately coding interventional and fluoroscopic procedures.

### WHO SHOULD ATTEND?

Physiatrists, physicians' office managers, and procedural coders who wish to discuss and approach the latest coding and billing issues in an interactive learning environment.

### ACCREDITATION

The American Academy of Physical Medicine and Rehabilitation is accredited by the Accreditation Council for Continuing Medical Education (ACCME) to provide continuing medical education for physicians.

### DESIGNATION OF CREDIT

The American Academy of Physical Medicine and Rehabilitation designates this live activity for a maximum of 8.5 *AMA PRA Category 1 Credits*™. Physicians should claim only the credit commensurate with the extent of their participation in the activity.

### AGENDA

#### Morning Session:

#### Coding and Reimbursement: Avoiding Audits and Denials 8 am–3:30 pm

This fast-paced morning session provides exhaustive answers to questions like: “Can I bill for this?” “How do I bill for it?” and “What do I need to document to show what I did?” Whether in private practice or compensated based on RVUs, the answers to these questions are important. This session will stress both complexity and medical necessity in selecting an E/M service, appropriate use of modifiers, and electrodiagnostic coding. This session also includes the most common ICD-10 problems during the first year of implementation.

#### Breakout Session A:

#### Advanced Coding for the Interventionalist 3:45 pm–5:45 pm

This information-packed session provides physicians and staff with the comprehensive knowledge and 2016 coding updates needed to accurately code and document spinal injections and other therapeutic procedure cases. Highly customized for outpatient musculoskeletal physiatrists, this session includes real-life case examples and actual clinical scenarios that bring key coding concepts to life.

#### Breakout Session B:

#### Advanced Coding for the Post-Acute Care Setting 3:45 pm–5:45 pm

This instructive breakout session provides physicians and staff with the comprehensive knowledge and 2016 coding updates needed for post-acute care including skilled nursing facility (SNF) and inpatient rehabilitation facility (IRF) coding and documentation. Highly customized for physiatrists who provide care in the post-acute care setting, this session includes real-life case examples and actual clinical scenarios that bring key coding concepts to life.

\*Faculty and content subject to change.

To view a complete agenda, visit [www.aapmr.org/assembly](http://www.aapmr.org/assembly).



# Clinical Applications of Ultrasound

Wednesday, October 19 | 8 am–5:20 pm

Hilton New Orleans Riverside

**CHRISTOPHER J. VISCO, MD (Course Director)**

This 1-day course is designed for physiatrists who want to start applying ultrasound to patients with musculoskeletal and neurologic diagnoses for diagnostic and interventional applications. More interactive, hands-on experiences than ever allows the clinician to begin developing and understanding the manual skills needed to improve their practice with clinical ultrasound. Over 5 hours of hands-on time will allow physiatrists to truly experience ultrasound first hand.

## LEARNING OBJECTIVES

Upon completion of this course, participants will be able to:

- Use an ultrasound machine, applying the various components to acquire an image, properly annotate, and document.
- Describe their understanding of surface structures and the relationship between regional anatomy, using ultrasound.
- Identify and differentiate structures typically examined in the neurologic and musculoskeletal system.
- Describe the indications, advantages, and disadvantages of using ultrasound imaging in musculoskeletal and/or neurologic clinical applications, including spasticity and pain.
- Modify the practice application of ultrasound to reflect current accepted uses and utilize a methodical approach when examining body regions.
- Alter practice efficiency with regard to the clinical application of ultrasound.
- Demonstrate improved visual-spatial and manual skill as it relates to needle tracking with ultrasound guidance.

## WHO SHOULD ATTEND?

Physicians who care for patients with neurologic or musculoskeletal diseases with a novice, beginner or intermediate understanding of ultrasound.

## ACCREDITATION

The American Academy of Physical Medicine & Rehabilitation is accredited by the Accreditation Council for Continuing Medical Education (ACCME) to provide continuing medical education for physicians.

## DESIGNATION OF CREDIT

The American Academy of Physical Medicine & Rehabilitation designates this live activity for a maximum of 9.75 *AMA PRA Category 1 Credits*<sup>™</sup>. Physicians should claim only the credit commensurate with the extent of their participation in the activity.

\*Faculty and content subject to change.



## COURSE HIGHLIGHTS

**NEW for 2016**—Online lectures available before the live course! Registrants will be able to view online lectures prior to the live course to maximize the time for hands-on training. It is strongly recommended that attendees view these online lectures before attending this course.

### Online Lecture Topics Include:

- Physics, optimization, and tissue differentiation
- Needle tracking and ultrasound-guided injection techniques
- Ultrasound spasticity, pediatric, and nerve applications in the upper limb
- Shoulder: normal anatomy and ultrasound protocol
- Forearm, wrist, and hand anatomy and ultrasound protocol

### Live Lecture and Hands-On Lab Topics Include:

- Technical, needle tracking, and manual skills lab
- Shoulder clinical applications and pathology with ultrasound
- Shoulder region scanning lab
- Forearm, wrist, and hand clinical applications and pathology with ultrasound
- Forearm, wrist, and hand region scanning lab

To view a complete agenda, visit [www.aapmr.org/assembly](http://www.aapmr.org/assembly).

# Building and Maintaining Medicolegal Work in Your Psychiatric Practice

Wednesday, October 19 | 8:30 am–5 pm

Hilton New Orleans Riverside

**MARTIN P. LANOFF, MD (Course Director)**

This 1-day course will provide the knowledge and hands-on experience to build and maintain a robust and ethical medicolegal practice by teaching attendees how to be an effective legal expert witness, report author, IME examiner, life care planner as well as other skills to help you diversify your practice in this area.

Building and Maintaining  
Medicolegal Work  
in Your Psychiatric Practice



## LEARNING OBJECTIVES

Upon completion of this course, participants will be able to:

- Perform life care planning
- Prepare an effective medicolegal file review
- Formulate effective expert witness testimony
- Recognize what an attorney expects during your expert testimony
- Perform an effective independent medical examination (IME)
- Identify fraud and abuse in the medicolegal arena
- Build and maintain a robust medicolegal practice
- Design an effective medicolegal report

## LECTURE TOPICS INCLUDE

- Life care planning
- Medicolegal file review techniques
- Physician expert witness testimony
- Attorney’s perspective of physician testimony
- The IME exam
- Fraud and abuse detection in the medicolegal arena
- Building and maintaining a medicolegal practice
- Authoring medicolegal reports, with hands-on critique and discussion session

## WHO SHOULD ATTEND?

Physicians interested in establishing, maintaining or improving an effective and ethical medicolegal practice. This course is focused on methods to help establish expert witness techniques and the day-to-day running of a medicolegal supplementary practice, in addition to improving any of these existing skills. The course is suitable for both physicians with or without previous medicolegal experience.

## ACCREDITATION

The American Academy of Physical Medicine and Rehabilitation is accredited by the Accreditation Council for Continuing Medical Education (ACCME) to provide continuing medical education for physicians.

## DESIGNATION OF CREDIT

The American Academy of Physical Medicine and Rehabilitation designates this live activity for a maximum of 6.75 *AMA PRA Category 1 Credits™*. Physicians should claim only the credit commensurate with the extent of their participation in the activity.


Attendees of this course who have authored medicolegal and independent medical exam reports in the past are asked to submit sample reports<sup>†</sup> to [meetings@aapmr.org](mailto:meetings@aapmr.org) for review and critique during this session. Please use the subject line: **Medicolegal Precourse Report Sample** when submitting your report.

<sup>†</sup>Per HIPAA laws, please remove physician and patient names from the sample reports before submitting.



If there is one thing New Orleans is famous for, that is certainly the Creole Cuisine. Jambalaya and King Cake for everyone!

\*Faculty and content subject to change.



## Live Streaming

For interested physicians who are unable to travel to New Orleans, AAPM&R is excited to open this precourse to a virtual audience. As a virtual participant, you will see and hear the lecture live, receive all course materials, participate in Q&A portions of the agenda, and receive a complete recording of the precourse. Registration and complete details will be available this summer.

To view a complete agenda, visit [www.aapmr.org/assembly](http://www.aapmr.org/assembly).



## Join us for 3 can't-miss plenary sessions from the country's most talked about newsmakers.

Plenary sessions bring all Annual Assembly attendees together to focus on common threads that connect all physiatrists. Start each event day with a fresh perspective on a hot topic that is sure to leave you talking well after the session!



### 601. Presidential Address: A Conversation with James Carville and Mary Matalin

**Gregory M. Worsowicz, MD, MBA;  
James "The Ragin' Cajun" Carville  
and Mary Matalin**

**Thursday, October 20 | 9:30 am–11 am**  
Ernest N. Morial Convention Center

AAPM&R President Gregory M. Worsowicz, MD, MBA, will officially launch the 2016 Annual Assembly and address attendees. This session will also feature today's most-talked about power couple—James Carville and Mary Matalin—who will kick-off the conference with a lively discussion on how the current political environment is affecting health care. An expert moderator will field questions from the audience for Carville and Matalin to weigh in on, and considering their differing viewpoints and affiliations, this plenary is sure to be a "can't-miss" for all attendees. With less than 150 days before Election Day, Carville and Matalin make for the perfect pairing this election season!



### 602. Don't Break the Rules. Change the Game!

**Dr. Bennet Omalu**

**Friday, October 21 | 9:30 am–10:30 am**  
Ernest N. Morial Convention Center

The topic of chronic traumatic encephalopathy (CTE) has been in the news a lot lately. From stories of professional athletes being diagnosed with the disorder to the *Concussion* movie of last Christmas, CTE is a hot-button topic throughout the medical community and society as a whole.

Join Dr. Bennet Omalu, a ground-breaking forensic pathologist and inspiration for the movie *Concussion*, as he discusses CTE and his history-making work to bring awareness to this disease. From humble beginnings in war-torn Nigeria to becoming a renowned physician with 8 degrees and certifications, Dr. Omalu's plenary will shed new light and provide first-hand insight on this important topic as he reminds the audience... "Don't Break the Rules. Change the Game!" View the *Concussion* trailer at [www.aapmr.org/assembly](http://www.aapmr.org/assembly).



### 603. Psychiatry in the Era of Population Health Management: Why We Must Change Forty-Eighth Walter J. Zeiter Lecture and Awards Video Presentation

**William A. Adair, MD**

**Saturday, October 22 | 9:30 am–10:45 am**  
Ernest N. Morial Convention Center

The systematic changes occurring in health care are impacting how you practice and how you are paid. Changes are happening so quickly; it's difficult to keep things straight, especially as you try to remain focused on what matters most—the patient. Dr. William A. Adair, physiatrist and vice president for clinical transformation at Advocate Christ Medical Center (Oak Lawn, IL), will discuss "Psychiatry in the Era of Population Health Management: Why We Must Change." A leader in post-acute care as a component of population health management, Dr. Adair will de-mystify this complex subject, offering a physiatrist's viewpoint on why the specialty must move toward this new delivery model.

**Wednesday, October 19**

TIME	TRACK	SESSION TITLE	SESSION #
7:30 am–3 pm	PRECONFERENCE COURSES	Regenerative Medicine: Current Concepts and Brave New Paradigms in the Treatment of Musculoskeletal Conditions	
8 am–5:20 pm		Clinical Applications of Ultrasound <i>Christopher J. Visco, MD (Course Director)</i>	
8 am–5:45 pm		Coding & Reimbursement: Avoiding Audits and Denials <i>Scott Horn, DO (Course Director)</i>	
8:30 am–5 pm		Building and Maintaining Medicolegal Work in Your Physiatric Practice <i>Martin P. Lanoff, MD (Course Director)</i>	
1 pm–7 pm	Registration, Speaker Ready Room, and Member Solution Center Open		
1 pm–7 pm	Interactive Arcade: <i>REMS Playbook for Opioid Prescribing</i>		Open to all attendees
2 pm–3:15 pm	RESIDENT/EARLY CAREER	You Are Here: Creating Your Path in the PM&R Specialty, Part 1 <i>Charlotte H. Smith, MD (Session Director)</i>	701
3:30 pm–5 pm		You Are Here: Creating Your Path in the PM&R Specialty, Part 2 <i>Charlotte H. Smith, MD (Session Director)</i>	702
4 pm–7 pm	INTENSIVE WORKSHOPS	Regenerative Medicine—Stem Cell Treatment in Osteoarthritis: Office-Based Application* <i>Joanne Borg-Stein, MD (Session Director)</i> <small>*Repeated session</small>	IW801 <b>T</b>
		Improving Assessment and Maximizing Intervention Options for Patients with Spasticity, Dystonia, and Related Motor Disorders* <i>Katharine E. Alter, MD; John R. McGuire, MD (Session Directors)</i> <small>*Repeated session</small>	IW802 <b>T</b>
5:15 pm–6:15 pm	RESIDENT/EARLY CAREER	You Get What You Negotiate—Contracting for PM&R Physicians <i>Kathy Sheets, Group Vice President</i> <small>Presented by the Hospital Corporation of America</small>	703
6:30 pm–9 pm	 Hilton New Orleans Riverside		


**Thursday, October 20**

TIME	TRACK	SESSION TITLE	SESSION #
6:30 am–8 pm	Registration and Member Solution Center Open		
7 am–8 am	Refreshment Break on Education Floor		
7 am–5 pm	Speaker Ready Room Open		
7 am–8 pm	Interactive Arcade: <i>REMS Playbook for Opioid Prescribing</i>		Open to all attendees
7:30 am–9 am	MUSCULOSKELETAL AND SPORTS MEDICINE	Get Moving and Stay Fit: Wellness and Lifestyle Modification in Rehabilitation <i>Matthew N. Bartels, MD, MPH (Session Director)</i>	101
		Practical Acupuncture in Pain Management <i>Xiaoli Dong, MD (Session Director)</i>	W102 <b>T</b>
		Use of Injury Risk Screening for ACL Injury Prevention <i>Daniel C. Herman, MD, PhD (Session Director)</i>	W103 <b>T</b>
		Most Reliable Electrodiagnostic Techniques for Carpal Tunnel Syndrome (CTS) <i>William S. Pease, MD (Session Director)</i>	W104 <b>T</b>
		Basics of Manual Manipulation in Physiatry: Part I—Lumbosacral, Pelvis, and Lower Extremity <i>Samuel A. Yoakum, DO (Session Director)</i>	W105 <b>T</b>
	NEUROLOGICAL REHABILITATION	Assessing Vision, Balance, and Vestibular Function as Potential Biomarkers for Concussion <i>Richard D. Davis, MD; Erin M. Swanson, MD (Session Directors)</i>	201
	FOCUSING ON THE HEALTH OF YOUR PRACTICE	ICD-10 is Here: Most Common Denials in PM&R and Clinical Documentation Improvements Necessary <i>Annie D. Purcell, DO (Session Director); Deborah Grider, CPC, COC, CPC-I, CPC-P, CPMA, CEMC, CCS-P, CDIP</i>	313
	GENERAL REHABILITATION	Integrating Advanced Rehabilitation Technology and Robotics into Clinical Practice <i>Joshua Vova, MD (Session Director)</i>	401
	PAIN AND SPINE	Pelvic Pain—Physiatric Evaluation and Management <i>Kelly M. Scott, MD (Session Director)</i>	501
RESIDENT/EARLY CAREER	Training is Over, Now What? Practical Management Pearls for the Trainee in Musculoskeletal and Sports Medicine <i>Jason Zaremski, MD, CAQSM (Session Director)</i>	704	

KEY TO SESSION DESIGNATIONS: W = Workshop IW = Intensive Workshop **T** = Paid ticket required



# Thursday, October 20

TIME	TRACK	SESSION TITLE	SESSION #
9 am–9:30 am		Refreshment Break on Education Floor	
9 am–2 pm		Learning Lab: Ultrasound	Open to all attendees
9:30 am–11 am		<b>Presidential Address: A Conversation with James Carville and Mary Matalin</b> Gregory M. Worsowicz, MD, MBA; James Carville and Mary Matalin	601
11 am–11:30 am		Refreshment Break on Education Floor	
11 am–2 pm	INTENSIVE WORKSHOPS	Regenerative Medicine—Stem Cell Treatment in Osteoarthritis: Office-Based Application* Joanne Borg-Stein, MD (Session Director) <i>*Repeated session</i>	IW803T
		ITB Pump Management Pearls for Patients with Spasticity, Dystonia, and Related Motor Disorders John R. McGuire, MD; Michael F. Saulino, MD, PhD (Session Directors)	IW804T
11:30 am–1 pm	MUSCULOSKELETAL AND SPORTS MEDICINE	Sports for a Lifetime: Specific Considerations for Older Athletes Mooyeon Oh-Park, MD (Session Director)	106
		Shoulder and Knee Injuries in the Athletic Population: What Can the Physical Exam Tell Us? Gerardo E. Miranda-Comas, MD (Session Director)	W107T
		Acupuncture as Alternative and Complementary Therapy for the Treatment of Pain Hong Wu, MD (Session Director)	W108T
	NEUROLOGICAL REHABILITATION	New Tools in Diagnosing and Treating Concussion: What is the Evidence? Mary A. Iaccarino, MD (Session Director)	202
	FOCUSING ON THE HEALTH OF YOUR PRACTICE	The Team, the Physiatrist, and Patient Outcomes: An Iterative Problem-Solving Approach to Improve Team Effectiveness Dale C. Strasser, MD (Session Director)	302
	GENERAL REHABILITATION	Choose Your Own Adventure: Top Papers in Pediatric Rehabilitation Matthew J. McLaughlin, MD (Session Director)	402
		Basics of Manual Manipulation in Physiatry: Part II—Neck, Shoulder, and Upper Extremity Samuel A. Yoakum, DO (Session Director)	W403T
		Pathological Gait: An Interactive Workshop Alex Moroz, MD (Session Director)	W404T
PAIN AND SPINE	Spine Center Lessons—Political Adventures of Our Peers and How We Can Learn from Them Rachel A. Brakke, MD (Session Director)	502	
RESIDENT/EARLY CAREER	Spinal Interventions for Residents	705	
1 pm–2 pm		Lunch Available for Purchase on Education Floor	
1 pm–2 pm		Product Theaters	
Member Council Gatherings 1 pm–2 pm		Central Nervous System Rehabilitation	
		Pain Medicine/Neuromuscular Medicine	
		Pediatric Rehabilitation/Developmental Disabilities	
2 pm–3:30 pm	MUSCULOSKELETAL AND SPORTS MEDICINE	Debate in Popular Topics within Sports Medicine: The Role of Minimalist Footwear and Platelet Rich Plasma in Management of Overuse Injuries Adam Tenforde, MD (Session Director)	109
		Manual Manipulation on the Sidelines: Getting Your Athletes Back in the Game Samuel A. Yoakum, DO (Session Director)	W111T
	NEUROLOGICAL REHABILITATION	Post-Traumatic Epilepsy: Caveats, Controversies, and Current Concepts Nathan D. Zasler, MD (Session Director)	203
		Incorporating Exoskeletal Robots Into Practice Joel Stein, MD (Session Director)	W204T
	FOCUSING ON THE HEALTH OF YOUR PRACTICE	Optimizing Physician/Health System Alignment: How to Empower Physicians and Administrators to Work Constructively Together in a Changing Health Care Environment Jeffrey E. Oken, MD (Session Director)	303

Faculty and content subject to change.

## Thursday, October 20

TIME	TRACK	SESSION TITLE	SESSION #
2 pm–3:30 pm	GENERAL REHABILITATION	Past, Present, and Future of Pediatric Rehabilitation: Gabriella Molnar-Swofford, MD, Pediatric PM&R Lifetime Achievement Lectureship and Research Updates Kevin P. Murphy, MD (Session Director)	405
	PAIN AND SPINE	Innovative Payment and Practice Models (IPPM) Spine Care Model—Great Health, Less Money! Stuart J. Glassman, MD (Session Director)	503
		Muscle Energy Treatment of Lumbar, Sacroiliac, and Pelvic Dysfunction James W. Atchison, DO (Session Director)	W504 <b>T</b>
3 pm–6 pm	INTENSIVE WORKSHOPS	Diagnostic Ultrasound of the Wrist and Hand: Case-Based Review of Common Injuries, and Overview of Commonly Performed Ultrasound-Guided Procedures Troy Henning, DO (Session Director)	IW805 <b>T</b>
		Hip Ultrasound: Scanning Techniques with Case-Based Clinical Correlation Joanne Borg-Stein, MD (Session Director)	IW806 <b>T</b>
3:30 pm–4 pm	Refreshment Break on Education Floor		
4 pm–5 pm	GENERAL REHABILITATION	Best Pediatric Rehabilitation Research Poster Presentations	407
4 pm–5:30 pm	MUSCULOSKELETAL AND SPORTS MEDICINE	Youth Running: Don't Run Your Kids into the Ground Brian J. Krabak, MD, MBA, FACSM (Session Director)	112
	NEUROLOGICAL REHABILITATION	Neuropharmacology in TBI: What We Know and What We Don't Jaime M. Levine, DO (Session Director)	205
		Non-Invasive Brain Stimulation Techniques: A Practical Guide Pablo A. Celnik, MD (Session Director)	W206 <b>T</b>
		Ultrasound Guidance for Head and Neck Chemodervation Procedures Katharine E. Alter, MD (Session Director)	W207 <b>T</b>
		Arriving at the Optimal Lower Limb Orthotic Prescription Alberto Esquenazi, MD (Session Director)	W208 <b>T</b>
	FOCUSING ON THE HEALTH OF YOUR PRACTICE	Leading In: Women and Leadership in Physiatry Kathleen R. Bell, MD (Session Director)	304
	GENERAL REHABILITATION	Rehabilitation Following Organ Transplantation: What EVERY Physiatrist Must Know Jeffrey M. Cohen, MD (Session Director)	406
	PAIN AND SPINE	Controversial Topics Surrounding Epidural Steroid Injections: Where's the Evidence? Ameet S. Nagpal, MD, MS, MEd (Session Director)	505
Mechanical Diagnosis and Therapy for Spine Pain Disorders Julie Marley, PT (Session Director)		W506 <b>T</b>	
5:30 pm–8 pm	Welcome Reception in the PM&R Pavilion (formerly known as the Exhibit Hall)		
State Society Meetings			
7:30 pm–8:30 pm	American Chinese Association of Physical Medicine and Rehabilitation Ohio Society of PM&R		
7:30 pm–9 pm	Louisiana State Society of PM&R New York Society of PM&R Society of Korean-American Physiatrists-Full 2016 Assembly		
7:30 pm–9:30 pm	FL Society of PM&R Reception		
8 pm–10 pm	PAPA Annual Meeting		
7:45 pm–9 pm	Satellite Symposia: Cutting Primary and Secondary ACL Injury Risk with Newly-Sharpener Tools		
9 pm–9:30 pm	Foundation for PM&R "Proof of the Pudding" Debate		



We're offering a mobile app this year! You will be able to build your personal schedule, access maps, speaker information, and an attendee list, as well as find exhibitors that match your clinical interests. Stay tuned to [www.aapmr.org/assembly](http://www.aapmr.org/assembly) for app details and download instructions.

KEY TO SESSION DESIGNATIONS: **W** = Workshop **IW** = Intensive Workshop **T** = Paid ticket required

# Friday, October 21

TIME	TRACK	SESSION TITLE	SESSION #
6:30 am		Foundation for PM&R Rehab 5K Run/Walk & Roll	
7 am–8 am		Refreshment Break on Education Floor	
7 am–5 pm		Speaker Ready Room Open	
7 am–6 pm		Registration and Member Solution Center Open	
7 am–7 pm		Interactive Arcade: <i>REMS Playbook for Opioid Prescribing</i>	Open to all attendees
7:30 am–9 am	MUSCULOSKELETAL AND SPORTS MEDICINE	Scott F. Nadler PASSOR Musculoskeletal Research Grant Winner and PASSOR Legacy/Lectureship Award	113
		Capsule-Preserving Hydraulic Distension for Adhesive Capsulitis <i>Sun G. Chung, MD, PhD (Session Director)</i>	W114
		Subtle Cavus Foot: Clinical and Ultrasonographic Evaluation and Biomechanics-Based Treatment <i>Mooyeon Oh-Park, MD (Session Director)</i>	W115
		Sideline Assessment and Management <i>Timothy Tiu, MD (Session Director)</i>	W116
	NEUROLOGICAL REHABILITATION	Determination and Communication of Prognosis After Severe Brain Injury <i>Sunil Kothari, MD (Session Director)</i>	209
		Ultrasound Guidance for Chemodenervation Procedures: Lower Limb Muscles and Nerves <i>Katharine E. Alter, MD (Session Director)</i>	W222
	FOCUSING ON THE HEALTH OF YOUR PRACTICE	The MACRA Primer: Preparing for the New Quality Payment Program* <i>Mark Huang, MD; Scott R. Laker, MD (Session Directors)</i>	315 <i>*Repeated session</i>
		Integration of Rehabilitation Programs in Different Health Care Settings: The Practice of Rehabilitation in an Era of Consolidation <i>Matthew N. Bartels, MD, MPH (Session Director)</i>	317
	GENERAL REHABILITATION	Increased Regulations with Prosthetic Care=Increased New Referrals for Physiatrists <i>Michael C. Munin, MD (Session Director)</i>	408
	PAIN AND SPINE	New Techniques for Treating Chronic Knee and Hip Pain Using Radiofrequency Ablation (RFA) <i>James D. Sigler, MD (Session Director)</i>	507
8 am–5 pm		Poster Hall Open	
9 am–9:30 am		Refreshment Break in the PM&R Pavilion	
9 am–3 pm		PM&R Pavilion Open (formerly known as the Exhibit Hall)	
9:30 am–10:30 am		Plenary Session: Don't Break the Rules. Change the Game! <i>Dr. Bennet Omalu</i>	602
10:30 am–11 am		Refreshment Break in the PM&R Pavilion	
11 am–12:30 pm	MUSCULOSKELETAL AND SPORTS MEDICINE	Clinical Pearls and Musculoskeletal Injuries <i>Joel M. Press, MD (Session Director)</i>	117
		Dry Needling I: Basic Science and Technique <i>Chi-Tsai Tang, MD (Session Director)</i>	W118
		Anatomy and Physical Exam Go Hand in Hand: The 5-Minute Hand Exam <i>Jeffrey S. Brault, DO (Session Director)</i>	W119
		NCS and Ultrasound in CTS and Ulnar Neuropathy <i>Anthony E. Chiodo, MD (Session Director)</i>	W120
	NEUROLOGICAL REHABILITATION	Fast and Furious: Top 10 Articles in CNS Rehabilitation in 2015-2016 <i>Christina Kwasnica, MD (Session Director)</i>	211
		Botulinum Toxin Injection to Unusual Sites <i>Chong Tae Kim, MD, PhD (Session Director)</i>	W212
	FOCUSING ON THE HEALTH OF YOUR PRACTICE	Innovations in Post-Acute Rehabilitation Environments <i>Steve M. Gnatz, MD, MHA (Session Director)</i>	306
	GENERAL REHABILITATION	Cardiac Rehabilitation Exemplifies the Role of PM&R in Value-Based Medicine: Growth Opportunities for Medically-Complex Cardiac Rehabilitation Programs <i>Jonathan H. Whiteson, MD (Session Director)</i>	409
	PAIN AND SPINE	Demystifying Low Back Pain: Where Orthopaedic and Psychosocial Pathology Collide <i>Byron J. Schneider, MD (Session Director)</i>	508
	11 am–12:30 pm		American Board of PM&R (ABPMR) How-to Session: Walking You Through a PIP

Faculty and content subject to change.



## Friday, October 21

TIME	TRACK	SESSION TITLE	SESSION #
11 am–2 pm	INTENSIVE WORKSHOPS	Regenerative Medicine—Stem Cell Treatment in Osteoarthritis: Office-Based Application* <i>Joanne Borg-Stein, MD (Session Director)</i> <span style="float: right;"><i>*Repeated session</i></span>	IW807 <b>T</b>
		Ultrasound Applications of Shoulder Diagnosis and Treatment <i>Brian J. Krabak, MD, MBA, FACSM (Session Director)</i>	IW808 <b>T</b>
Member Council Gatherings 12:30 pm–1:30 pm		General and Medical Rehabilitation	
		Musculoskeletal Medicine	
12:30 pm–2:30 pm		Lunch Available for Purchase in the PM&R Pavilion	
12:45 pm–1:45 pm		Product Theaters	
2:30 pm–3:30 pm	NEUROLOGICAL REHABILITATION	Best Neurological Rehabilitation Research Poster Presentations	214
2:30 pm–4 pm	MUSCULOSKELETAL AND SPORTS MEDICINE	Scapular Muscle Dyskinesia and Shoulder Pain: The Chicken, the Egg, or a Primary Cause of Upper Quadrant Pain? <i>Bradley D. Fullerton, MD (Session Director)</i>	121
		Dry Needling II: Applications <i>Chi-Tsai Tang, MD (Session Director)</i>	W122 <b>T</b>
		Palpation-Based Approach With Complementary Ultrasonography in Wrist and Hand Disorders <i>Phuong U. Le, DO (Session Director)</i>	W123 <b>T</b>
	NEUROLOGICAL REHABILITATION	Toxin Safety Zone for Patients and Practitioners: A Practice Safety Review for Providers Injecting any Pediatric and Adolescent Hypertonia <i>Ed Wright, MD (Session Director)</i>	213
		Ultrasound-Guided Uncommon Nerve Blocks for Spasticity Management: Lower Extremity <i>Karen Morice, MD (Session Director)</i>	W215 <b>T</b>
	FOCUSING ON THE HEALTH OF YOUR PRACTICE	The MACRA Primer: Preparing for the New Quality Payment Program* <i>Mark Huang, MD; Scott R. Laker, MD (Session Directors)</i> <span style="float: right;"><i>*Repeated session</i></span>	318
	GENERAL REHABILITATION	Team Leadership is Important in PM&R – Yes or No? <i>Dale C. Strasser, MD (Session Director)</i>	410
	PAIN AND SPINE	This Year's Top Papers in Spine Care <i>Brett A. Gerstman, MD (Session Director)</i>	509
		NCS and Ultrasound in Proximal Nerve Studies <i>Anthony E. Chiodo, MD (Session Director)</i>	W510 <b>T</b>
	3 pm–4 pm		American Board of PM&R (ABPMR) Town Hall
3 pm–6 pm	INTENSIVE WORKSHOPS	Lumbar Spine, Abdomen, and Pelvic Pain Procedures with Ultrasound <i>Mark B. Hurdle, MD (Session Director)</i>	IW809 <b>T</b>
		Improving Assessment and Maximizing Intervention Options for Patients with Spasticity, Dystonia, and Related Motor Disorders* <i>Katharine E. Alter, MD; John R. McGuire, MD (Session Directors)</i> <span style="float: right;"><i>*Repeated session</i></span>	IW810 <b>T</b>
3:15 pm–4:10 pm	FOCUSING ON THE HEALTH OF YOUR PRACTICE	Overview of Utilization Management and How Decisions Are Made <i>Benton T. Giap, MD (Session Director)</i>	309
3:45 pm–4:15 pm		Refreshment Break on Education Floor	
4 pm–5 pm		AAPM&R Town Hall	
4:15 pm–5:45 pm	MUSCULOSKELETAL AND SPORTS MEDICINE	AAPM&R-AMSSM Exchange Lecture <i>Ellen Casey, MD (Session Director); Anthony Beulter, MD</i> <span style="float: right;"><i>in partnership with</i> </span>	137
		G000AL: Advancing Paralympic Soccer in America <i>Monica E. Rho, MD (Session Director)</i>	124
		Advanced Therapeutic Exercises and Ultrasound-Guided Procedures for IT Band Syndrome, and Greater Trochanteric Pain Syndrome <i>Michael J. Khadavi, MD; John M. Vasudevan, MD (Session Directors)</i>	W125 <b>T</b>
		Pain in the Butt Clinical Evaluation with Complementary Ultrasonography and Intervention <i>Se won Lee, MD (Session Director)</i>	W127 <b>T</b>
	NEUROLOGICAL REHABILITATION	The Wide World of Spasticity: Evidence-Based Successful Practice Habits <i>Ameet S. Naggal, MD, MS, MEd (Session Director)</i>	216
		Ultrasound-Guided Uncommon Nerve Blocks for Spasticity Management: Upper Extremity <i>Karen Morice, MD (Session Director)</i>	W217 <b>T</b>

KEY TO SESSION DESIGNATIONS: W = Workshop IW = Intensive Workshop **T** = Paid ticket required

## Friday, October 21

TIME	TRACK	SESSION TITLE	SESSION #
4:15 pm–5:45 pm	GENERAL REHABILITATION	Inpatient Cancer Rehabilitation: Challenges and Practical Solutions Jack B. Fu, MD (Session Director)	411
	PAIN AND SPINE	Spine Center Surprises: Unusual Diagnoses Presenting as Typical Spine Syndromes Salvador Portugal, DO (Session Director)	511
		Osteopathic Manipulative Medicine (OMM) for Post-Mastectomy/Reconstruction Pain Syndrome Jonas Sokolof, DO (Session Director)	W519
4:30 pm–6 pm	FOCUSING ON THE HEALTH OF YOUR PRACTICE	Physical Medicine and Rehabilitation as a Driving Force of Value-Based Medicine Jonathan H. Whiteson, MD (Session Director)	308
6:15 pm–7:30 pm	Satellite Symposia: Strategies for Combating Opioid-Induced Constipation		
7 pm–10 pm	President's Reception — National WWII Museum		

## Saturday, October 22

TIME	TRACK	SESSION TITLE	SESSION #
7 am–8 am	Refreshment Break on Education Floor		
7 am–5 pm	Speaker Ready Room Open		
7 am–6 pm	Registration and Member Solution Center Open		
7 am–7 pm	Interactive Arcade: <i>REMS Playbook for Opioid Prescribing</i>		Open to all attendees
7:30 am–9 am	MUSCULOSKELETAL AND SPORTS MEDICINE	Musculoskeletal Physical Exam: What Works, What's Worthless, and the Evidence Behind It Shawn P. Jorgensen, MD (Session Director)	128
		Ultrasound Imaging of Lower Extremity Nerves: Identification and Injection Techniques Joanne Borg-Stein, MD (Session Director)	W129
		Ultrasonography in Scapular Dyskinesia: An Interactive Diagnostic Workshop Bradley D. Fullerton, MD (Session Director)	W130
		Sports and Soft Tissue: Musculoskeletal Case Presentations Joe M. Ihm, MD (Session Director)	138
	NEUROLOGICAL REHABILITATION	Driving After Acquired Brain Injury: What Every Physiatrist Should Know Nathan D. Zasler, MD (Session Director)	218
		Ultrasound Guidance for Chemodenervation Procedures: Upper Limb Muscles and Nerves Katharine E. Alter, MD (Session Director)	W219
	FOCUSING ON THE HEALTH OF YOUR PRACTICE	A PM&R Educational Toolbox: Hi-Tech and Low-Tech Strategies to Promote Learner Engagement and Educator Growth Chloe S. Slocum, MD (Session Director)	311
	GENERAL REHABILITATION	End Stage Renal Disease and Renal Rehabilitation Shangming Zhang, MD (Session Director)	412
		Unique Procedures in Cancer Rehabilitation Eric M. Wisotzky, MD (Session Director)	W413
	PAIN AND SPINE	Best Pain and Spine Medicine Research Podium Presentations	512
8 am–3 pm	Medical Student Program and Residency Fair		
8 am–5 pm	Poster Hall Open		
9 am–9:30 am	Refreshment Break Inside the PM&R Pavilion		
9 am–2:30 pm	PM&R Pavilion Open (formerly known as the Exhibit Hall)		
9:30 am–10:45 am	Plenary Session: Forty-Eighth Walter J. Zeiter Lecture and Awards Video Presentation William A. Adair, MD		603
10:45 am–11:15 am	Refreshment Break Inside the PM&R Pavilion		

Faculty and content subject to change.

Saturday, October 22

TIME	TRACK	SESSION TITLE	SESSION #
11 am–12:30 pm	MUSCULOSKELETAL AND SPORTS MEDICINE	Non-Operative and Surgical Management of Hip Impingent: Part I <i>Peter J. Moley, MD (Session Director)</i>	131
		Ultrasound Imaging of Upper Extremity Nerves: Identification and Injection Techniques <i>Joanne Borg-Stein, MD (Session Director)</i>	W132 Ⓡ
		Physical Examination Maneuvers and the Use of Ultrasound for Examination of Peripartum Patients <i>Farah Hameed, MD (Session Director)</i>	W139 Ⓡ
	NEUROLOGICAL REHABILITATION	Best Neurological Rehabilitation Research Podium Presentations	220
		Hemiplegic Shoulder Pain: Prevention, Evaluation, and Emerging Topics <i>Andrew Kirsteins, MD (Session Director)</i>	W221 Ⓡ
	FOCUSING ON THE HEALTH OF YOUR PRACTICE	An Insider’s Guide to Your Fellowship Search <i>Rachel A. Brakke, MD; Scott R. Laker, MD (Session Directors)</i>	319
	GENERAL REHABILITATION	Peripheral Neuropathies Every Psychiatrist Should Know About <i>Shawn P. Jorgensen, MD (Session Director)</i>	414
	PAIN AND SPINE	Obstacles and Opportunities in Growing Your Outpatient Musculoskeletal and Spine Practice in the Current Health Care Environment <i>Brian F. White, DO (Session Director)</i>	513
Ultrasound Guided Injections for Head and Neck Pain <i>Soo Yeon Kim, MD (Session Director)</i>		W514 Ⓡ	
11 am–2 pm	INTENSIVE WORKSHOPS	Regenerative Medicine: Stem Cell Treatment in Osteoarthritis Office-Based Applications* <i>Joanne Borg-Stein, MD (Session Director)</i> <i>*Repeated session</i>	IW811 Ⓡ
		Improving Focal Chemodeneration Skills to Treat Patients with Spasticity, Dystonia, and Related Motor Disorders <i>Katharine E. Alter, MD; Thomas K. Watanabe, MD (Session Directors)</i>	IW812 Ⓡ
11 am–7 pm	Cancer Rehabilitation Summit: Integration Into Practice		
12:30 pm–2:30 pm	Lunch Available for Purchase in the PM&R Pavilion		
12:45 pm–1:45 pm	Product Theaters		
12:45 pm–1:45 pm	AAPM&R Business Meeting		
2:30 pm–3:30 pm	MUSCULOSKELETAL AND SPORTS MEDICINE	Best Musculoskeletal Medicine Research Poster Presentations	134
2:30 pm–4 pm		Effective Assessment and Biomechanical Retraining for Running Injuries <i>Irene Davis, PhD, PT, FACSM, FAPTA, FASB (Session Director)</i>	W110 Ⓡ
		Non-Operative and Surgical Management of Hip Impingent: Part II <i>Peter J. Moley, MD (Session Director)</i>	133
		Comprehensive Evidence-Based MSK Physical Exam Skills for Assessment of the Injured Athlete <i>Rosalyn T. Nguyen, MD (Session Director)</i>	W135 Ⓡ
		Frontiers in Rehabilitation Robotics <i>Joel Stein, MD (Session Director)</i>	223
ITB Troubleshooting: When You’re Lost and the Going Gets Tough <i>Rochelle T. Dy, MD (Session Director)</i>		W224 Ⓡ	
FOCUSING ON THE HEALTH OF YOUR PRACTICE		New Attending Expectations and Suggested Tips for Success <i>James J. Daley, MD (Session Director)</i>	312
GENERAL REHABILITATION		Moving Electromyography Forward: 2016 Updates for Electrodiagnosis: New Evidence-Based Guidelines <i>Faye C. Chiou-Tan, MD (Session Director)</i>	415
PAIN AND SPINE	Musculoskeletal Outcome Update—What Should We Be Measuring and Why? <i>Richard W. Kendall, DO (Session Director)</i>	515	
3:45 pm–4:15 pm	Refreshment Break on Education Floor		
4:15 pm–5:45 pm	MUSCULOSKELETAL AND SPORTS MEDICINE	Ultrasound as a PM&R Gamechanger: How US Did, Will or Should Transform 4 Corners of Our Field <i>Shawn P. Jorgensen, MD (Session Director)</i>	136
	NEUROLOGICAL REHABILITATION	Robotics in Rehabilitation: Optimizing Treatment Delivery <i>Alberto Esquenazi, MD (Session Director)</i>	225
	FOCUSING ON THE HEALTH OF YOUR PRACTICE	Increasing Vitality and Preventing Burn Out: Review of the Evidence and How to Implement a Practical Plan for a Long and Happy Career <i>Karen Barr, MD (Session Director)</i>	314



## Saturday, October 22

TIME	TRACK	SESSION TITLE	SESSION #
4:15 pm–5:45 pm	GENERAL REHABILITATION	What is the Role of Physical Medicine and Rehabilitation in the World of Dementia? <a href="#">Natasa Miljkovic, MD, PhD (Session Director)</a>	416
	PAIN AND SPINE	Cannabis as Medicine: Lessons from Colorado <a href="#">Kenneth P. Finn, MD (Session Director)</a>	516
4:30 pm–5:30 pm Chief Residents' Meeting			
Alumni Receptions			
7 pm–8:30 pm		Mayo Clinic Alumni Association & Mayo Krusen Society	
7 pm–9 pm	Michigan State & Wayne State University School of Medicine, Department of PM&R—Oakwood Residency Programs/Mary Free Bed Network		
	NewYork-Presbyterian Hospital/Columbia/Cornell Alumni Reception		
	The Ohio State University Wexner Medical Center Alumni Reunion		
	Schwab Rehabilitation Hospital Alumni Reception		
	Sidney Kimmel Medical College at Thomas Jefferson University Alumni, Faculty, and Resident Reception		
	Spaulding Rehabilitation Hospital/Harvard Medical School Department of PM&R Reception		
	University of Michigan Department of Physical Medicine & Rehabilitation Alumni Reception		
	UTSouthwestern Alumni Reception		
	VA Greater Los Angeles/UCLA-Affiliated PM&R Residency & Pain Medicine Fellowship Alumni Reception		
7 pm–9:30 pm	MetroHealth Rehab Institute/Case Western Alumni Reception		
	University of Washington Alumni Reception		
7 pm–10 pm	Rehabilitation Institute of Chicago/Northwestern University Feinberg School of Medicine Alumni Reception		
	Rusk Rehabilitation-NYU-Langone Medical Center Alumni Reception		
	Temple/Moss Alumni Gathering		

## Sunday, October 23

TIME	TRACK	SESSION TITLE	SESSION #
7 am–10:30 am Member Solution Center Open			
7:30 am–8:30 am Refreshment Break on Education Floor			
7:30 am–9 am Speaker Ready Room Open			
7:30 am–12 pm Interactive Arcade: <i>REMS Playbook for Opioid Prescribing</i> Open to all attendees			
8 am–9:30 am	NEUROLOGICAL REHABILITATION	Stroke Rehabilitation and Medically Supervised Exercise Therapy (MSET) <a href="#">David Z. Prince, MD (Session Director)</a>	226
	FOCUSING ON THE HEALTH OF YOUR PRACTICE	Practice Efficiency: Using Extenders to Optimize Practice <a href="#">Eric T. Spier, MD (Session Director)</a>	301
	GENERAL REHABILITATION	Transitional Care: What Adult Physiatrists Need to Know About Childhood Disabilities <a href="#">Frank S. Pidcock, MD (Session Director)</a>	417
	PAIN AND SPINE	Spine Care of the Injured Athlete <a href="#">Jason L. Zaremski, MD, CAQSM (Session Director)</a>	517
9 am–9:30 am Refreshment Break on Education Floor			
9:45 am–11:15 am	MUSCULOSKELETAL AND SPORTS MEDICINE	Knee and Shoulder Surgery: Why or Why Not Refer? <a href="#">Wayne L. Stokes, MD (Session Director)</a>	114
	NEUROLOGICAL REHABILITATION	Creating Value for the Patient: A Comprehensive Interdisciplinary Rehabilitation Program for the Patient with Neurogenic Lower Urinary Track Dysfunction <a href="#">Asare B. Christian, MD, MPH (Session Director)</a>	227
	FOCUSING ON THE HEALTH OF YOUR PRACTICE	Private Practice Pearls 2016—Thriving Not Just Surviving <a href="#">Gregory B. Park, MD (Session Director)</a>	307
	GENERAL REHABILITATION	Sights and Sounds of EMG <a href="#">Shawn P. Jorgensen, MD (Session Director)</a>	418
	PAIN AND SPINE	Pain Management in the Athlete: Issues and Controversies <a href="#">Luis Baerga, MD (Session Director)</a>	518

KEY TO SESSION DESIGNATIONS: W = Workshop IW = Intensive Workshop T = Paid ticket required

# Adding Life to Years<sup>®</sup>



Visit us at Booth 317

MedStar National Rehabilitation Network (MedStar NRH), a part of the MedStar Health system, is a network of inpatient, day treatment and outpatient services offered at numerous locations throughout Washington, D.C., Maryland and Northern Virginia.

The MedStar NRH Network treats a wide range of orthopaedic and neurologic medical conditions—from severe injuries and illness to sports injuries. Through specialized medical care, therapy, and the latest

technology and research, we help people learn to help themselves.

Our goal is to enable people to be as active and independent as possible. Simply put, we are dedicated to Adding Life to Years<sup>®</sup>—that has been and always will be—the MedStar NRH difference.

To learn more or find a location close to you, visit [MedStarNRH.org](http://MedStarNRH.org).



**MedStar National  
Rehabilitation Network**

**Ranked by physicians for 20 consecutive years as one of the top rehabilitation hospitals in the nation in *U.S. News & World Report*.**

## Meet Your Continuing Medical Education (CME) Requirements

### ACCREDITATION

The American Academy of Physical Medicine and Rehabilitation is accredited by the Accreditation Council for Continuing Medical Education (ACCME) to provide continuing medical education for physicians.

The Program Planning Committee (PPC) has developed the educational program this year in accordance with the ACCME Essentials for developing continuing medical education. Educational topics were selected on the basis of evaluation from previous educational offerings, advice from AAPM&R Member Councils, and the expert opinion of PPC. In every session, the level of information, modes of presentation, and learning objectives were developed to meet the needs of physiatrists.

### LEARNING OBJECTIVES

The educational content for the AAPM&R 2016 Annual Assembly is composed of courses and workshops. Each of these individual sessions has specific learning objectives that session directors, along with the help of their faculty in most cases, have created to communicate the desired outcomes for learners.

Individual learning objectives for each session can be found on the AAPM&R website: [www.aapmr.org/assembly](http://www.aapmr.org/assembly). In addition to providing learning objectives for each individual educational session, AAPM&R's Program Planning Committee (PPC) of the AAPM&R Medical Education Committee has also developed global learning objectives for the entire meeting. When planning and determining the educational content and structure of the 2016 Annual Assembly, the PPC has determined the following overall learning objectives for this year's Annual Assembly.

As a result of participating in the Annual Assembly, participants will be able to:

1. Practice evidence-based, informed physiatric care.
2. Demonstrate the application of current techniques, procedures, and research in the PM&R field.
3. Apply knowledge to guide clinical decisions in practice and treatment of patients.
4. Become more involved in advocacy issues related to physical medicine and rehabilitation.
5. Utilize appropriate models and guidelines, including coding and billing; patient management and documentation; risk management; marketing; outcomes assessment to improve physician practice; and quality of patient care.
6. Discuss the latest advances in technology and equipment for patient care.
7. Incorporate effective strategies to enhance working in interdisciplinary teams.
8. Improve communication skills and strengthen professional relationships.

### CME CREDIT DESIGNATION

Educational open sessions, workshops, and best research presentations will be available for *AMA PRA Category 1 Credit™* as noted in the *Official Program*. One credit is awarded for each hour of participation in designated activities.

Only registered attendees may receive credit; guests and exhibitors are not eligible to receive CME credit. General viewing of scientific posters is not designated for *AMA PRA Category 1 Credit™*.

- **U.S. Physicians:** The American Academy of Physical Medicine and Rehabilitation designates this live activity for a maximum of 28.25 *AMA PRA Category 1 Credits™*. Physicians should claim only the credit commensurate with the extent of their participation in the activity.
- **International Physicians:** The American Medical Association has determined that physicians who are not licensed in the U.S. but who participate in this CME activity are eligible for *AMA PRA Category 1 Credit™*.
- **Health Care Professionals:** The Academy is not accredited to offer credit for nurses and other health care professionals. To determine if activities offered are acceptable for your licensing or certification needs, please contact the relevant organizations directly.

Faculty CME for Presenters: The Academy will award *AMA PRA Category 1 Credits™* for participation as a faculty member at the 2016 Annual Assembly. Faculty may be awarded 2 *AMA PRA Category 1 Credits™* for each hour of original presentation at an educational session. Faculty may not claim simultaneous credit as physician learners for their presentations; however, they may claim participant credit for other sessions they attend as learners. Credit may only be claimed once for repeated presentations. Faculty CME can be claimed via a postconference evaluation. CME letters and evaluations will be distributed post Annual Assembly.

### Don't Forget to Claim CME Credit for the 2015 Annual Assembly

If you attended the 2015 Annual Assembly and preconference courses in Boston, MA, make sure to sign in to **mē®** ([me.aapmr.org](http://me.aapmr.org)) to claim your CME credit before it expires:

- Preconference Courses—Expires **September 30, 2016**
  - › Introduction to Diagnostic and Interventional Ultrasound Applications in Physiatry
  - › Coding & Billing Workshop
  - › Regenerative Medicine: Current Concepts in the Treatment of Musculoskeletal Conditions
- 2015 Annual Assembly—Expires **October 4, 2016**



## New in NOLA!

The Annual Assembly is more than didactic learning—it's a complete and user-friendly experience! The 2016 educational program offers a variety of ways to learn, including innovative new technologies (real-time polling in session rooms and our new mobile app) and educational content to help you focus on the health of your practice. We've brought the best to New Orleans this year and have new, innovative learning opportunities for you to experience!

All of the offerings on pages 20–21 are included in your registration fee.



Flip to the inside back page to learn about the extensive changes in physician payment policies that start January 1, 2017.

\*These educational activities are supported by an independent educational grant from the ER/LA Opioid Analgesic REMS Program Companies. Please see [http://ce.er-la-opioidrems.com/lwgCEUI/rems/pdf/List\\_of\\_RPC\\_Companies.pdf](http://ce.er-la-opioidrems.com/lwgCEUI/rems/pdf/List_of_RPC_Companies.pdf) for a listing of member companies. These activities are intended to be fully compliant with the ER/LA Opioid Analgesics REMS education requirements issued by the U.S. Food & Drug Administration.

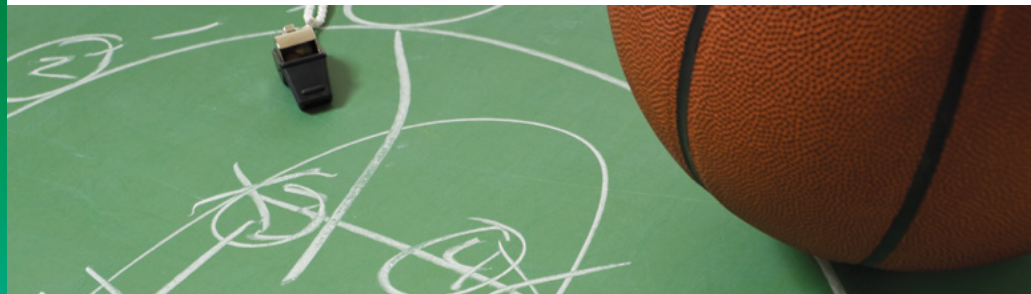
## Interactive Arcade:\* REMS Playbook for Opioid Prescribing

Wednesday, October 19–Sunday, October 23

Ernest N. Morial Convention Center

The Interactive Arcade: *REMS Playbook for Opioid Prescribing*, offers a unique opportunity for physicians to experience interactive education in an intimate setting. As a self-directed, hands-on education experience, the arcade will combine multimedia information areas with mobile devices to provide participants an engaging experience. Video clips, mini-presentations, and other media will convey key clinical and management concepts covered in the ER/LA REMS. Faculty will also be on-hand to guide attendees through the experience and answer any follow-up questions they may have.

The Interactive Arcade is included in your registration fee and will offer CME. Stay tuned to [www.aapmr.org/assembly](http://www.aapmr.org/assembly) for more details.



## Learning Lab: Ultrasound\*\*

Thursday, October 20 | 9 am–2 pm

Ernest N. Morial Convention Center

The Academy is proud to offer a new Learning Lab: Ultrasound at the 2016 Annual Assembly. This activity will focus on ultrasound with mini-sessions, demonstrations, and hands-on learning stations that will teach you a variety of ways to use ultrasound and how to incorporate it into your practice. Learn about the various aspects of ultrasound in the physiatric practice in a fun, interactive way. Academy faculty, as well as industry leaders in ultrasound technology, will be on-hand to guide you through the experience. The Learning Lab: Ultrasound is included in your registration fee. Sign up by using the form found in the back of this program or register via the Assembly website at [www.aapmr.org/assembly](http://www.aapmr.org/assembly).

### WHY IS THIS IMPORTANT TO PHYSIATRISTS?

- Strengthen your existing ultrasound skill set and enhance your career, hands-on scanning, point-of-care application, live demonstrations, and image optimization.
- Find potential new revenue opportunities to add to your practice.
- Meet and interact with industry experts in the field of ultrasound education, as well as your peers in a hands-on environment.

\*\*While included in your registration, this activity does not offer CME.

Faculty and content subject to change.

## Focusing on the Health of Your Practice

Health care is undergoing extensive transformation. This transition period requires physiatrists to remain astute to these changes and flexible in adapting your practice. In order to stay competitive, you must systematically evaluate your practice design and move it forward to meet changing reimbursement and practice models.

The “Focusing on the Health of Your Practice” sessions are designed to enhance your understanding of the changes and opportunities currently available in health care. This focused theme will take you beyond the day-to-day practice challenges and help you understand what the future holds for psychiatry in this changing health care landscape. Check out a few session highlights below. Visit [www.aapmr.org/assembly](http://www.aapmr.org/assembly) for the full session list.

### 313. ICD-10 is Here: Most Common Denials in PM&R and Clinical Documentation Improvements Necessary

Thursday, October 20 | 7:30 am–9 am  
ANNIE D. PURCELL, DO (Session Director)

### 304. Leaning In: Women and Leadership in Psychiatry

Thursday, October 20 | 4 pm–5:30 pm  
KATHLEEN R. BELL, MD (Session Director)

### 318. The MACRA Primer: Preparing for the New Quality Payment Program

Friday, October 21 | 2:30 pm–4 pm  
MARK HUANG, MD; SCOTT R. LAKER, MD (Session Directors)

### 309. Overview of Utilization Management and How Decisions Are Made

Friday, October 21 | 3:15 pm–4:10 pm  
BENTON T. GIAP, MD (Session Director)

### 301. Practice Efficiency: Using Extenders to Optimize Practice

Sunday, October 23 | 8 am–9:30 am  
ERIC T. SPIER, MD (Session Director)

### 307. Private Practice Pearls 2016—Thriving Not Just Surviving

Sunday, October 23 | 9:45 am–11:15 am  
GREGORY B. PARK, MD (Session Director)

## Cancer Rehabilitation Summit: Integration into Practice

Saturday, October 22 | 11 am–7 pm

Ernest N. Morial Convention Center

JACK B. FU, MD; ERIC WISOTZKY, MD (Session Directors)

The Academy is proud to announce this full-day event highlighting the unique opportunities for physiatrists in the cancer care continuum. This program is targeted to physical medicine and rehabilitation physicians who are interested in learning about opportunities to transform their practice.

### CANCER REHABILITATION PRACTICE DEVELOPMENT MODELS

Attendees will be introduced to different practice models of cancer rehabilitation. A practice model in a large academic medical center will be presented demonstrating opportunities for integration within clinical, teaching, and administrative operations. In addition, a practice model in a smaller private cancer center will be presented, highlighting the great potential in this setting. Lastly, the different potential clinical components of a cancer rehabilitation practice will be presented, including inpatient, outpatient, and consultative care. The opportunities and potential pitfalls in each of the following areas will be discussed:

- Introduction to cancer rehabilitation
- Cancer rehabilitation in a major academic medical center
- Cancer rehabilitation in a small private cancer center
- Networking in cancer rehabilitation

### CLINICAL PRACTICE AREAS IN CANCER REHABILITATION

Learners will discuss the common cancer-related impairments that can benefit from a psychiatric approach. Attendees will walk away with major bullet-pointed clinical skills that can be immediately implemented into their practice. In addition, there will be a focus on differentiating the role of the physiatrist from other practitioners, including therapists, anesthesia pain specialists, and palliative care physicians.

- Breast cancer rehabilitation
- Cancer rehabilitation specific impairments:
  - › Cancer-related fatigue
  - › Cancer-related cognitive impairment
  - › Trismus
  - › Chemotherapy-induced peripheral neuropathy
  - › Malignant spine
- Differentiation from physical therapy, pain management, and palliative care

## Intensive Workshops

Clinical education takes center stage at the 2016 Annual Assembly. Interested in taking your practice and skill set to new levels? Then we have an educational opportunity just for you! Intensive workshops are 180 minutes in length and offer a blend of didactic and hands-on learning. Get an introduction to new skills in these sought-after practice areas.

- Seats will fill up fast for these in-demand sessions.
- You must be registered for the Annual Assembly to register for an intensive workshop. Registration is on a first-come, first-served basis, and does not impact your ability to register for 90-minute workshops. Each 3-hour workshop is limited to 36 participants to ensure an intimate learning environment.
- Use the form found in the back of this program or register via the Assembly website at [www.aapmr.org/assembly](http://www.aapmr.org/assembly).

### WHY IS THIS IMPORTANT TO PHYSIATRISTS?


- Enhance your existing PM&R skill set.
- Find potential new revenue opportunities to add to your practice.
- Meet and interact with industry experts, as well as peers in an intimate, hands-on setting.
- Learn more about emerging new technologies.

Faculty and content subject to change.



## Spasticity

### Improving Assessment and Maximizing Intervention Options for Patients with Spasticity, Dystonia, and Related Motor Disorders\*

**IW802**  **Wednesday, October 19 | 4 pm–7 pm**

**IW810**  **Friday, October 21 | 3 pm–6 pm**

**KATHARINE E. ALTER, MD; JOHN R. MCGUIRE, MD (Session Directors)**

This intensive workshop will provide a review and update on the etiology, evaluation of, and therapy options when treating patients with spasticity and other common forms of muscle hypertonia. Attendees will receive hands-on training that will improve your skills in muscle selection and targeting for chemodenervation procedures as well as training for ultrasound-assisted ITB pump refills and troubleshooting.

### ITB Pump Management Pearls for Patients with Spasticity, Dystonia, and Related Motor Disorders

**IW804**  **Thursday, October 20 | 11 am–2 pm**

**JOHN R. MCGUIRE, MD; MICHAEL F. SAULINO, MD, PhD (Session Directors)**

This intensive workshop will focus on improving your ability to assess which patients with spasticity, dystonia, and related motor disorders are good candidates for ITB therapy. Attendees will practice pump programming during titration and troubleshooting, programming to optimize therapy, and using ultrasound to guide pump refills. Additional topics include radiologic interpretation of troubleshooting procedures, programming basics with new intrathecal systems, CSF flow dynamics, catheter/bolus trialing, H reflex testing, intraventricular vs. intrathecal, baclofen overdose and withdrawal, and complex programming strategies.

### Improving Focal Chemodenervation Skills to Treat Patients with Spasticity, Dystonia, and Related Motor Disorders

**IW812**  **Saturday, October 22 | 11 am–2 pm**

**KATHARINE E. ALTER, MD; THOMAS K. WATANABE, MD (Session Directors)**

This intensive workshop will focus on improving your ability to assess patients, and then identify and provide appropriate treatment interventions to optimize outcomes for patients with spasticity, dystonia, and related motor disorders. Treatment techniques will focus on botulinum toxin and nerve block injection techniques (including EMG/electrical stimulation and ultrasound guidance), while discussing other intervention options. Attendees will participate in hands-on demonstrations to practice and reinforce the concepts of the focal chemodenervation techniques covered in this intensive workshop.

Workshop and intensive workshop tickets may not be exchanged or canceled after September 8, 2016. See the AAPM&R cancellation policy on page 44 for further information. You must be registered for Thursday only or the full Annual Assembly to attend an intensive workshop scheduled on Wednesday.

\*Repeated sessions





# Regenerative Medicine

## Regenerative Medicine—Stem Cell Treatment in Osteoarthritis: Office-Based Application\*

IW801 ① Wednesday, October 19 | 4 pm–7 pm

IW807 ① Friday, October 21 | 11 am–2 pm

IW803 ① Thursday, October 20 | 11 am–2 pm

IW811 ① Saturday, October 22 | 11 am–2 pm

**JOANNE BORG-STEIN, MD (Session Director)**

This intensive workshop will introduce and examine the various regenerative medicine options for the treatment of osteoarthritis and how to implement them into your practice, including an overview of how to obtain and process bone marrow for stem cell injections. Hands-on simulation experiences in drilling techniques, as well as practical training on how to process the aspirates with various kits and equipment, will be provided. We'll be offering this workshop 4 times throughout the Assembly.

## Ultrasound

### Diagnostic Ultrasound of the Wrist and Hand: Case-Based Review of Common Injuries, and Overview of Commonly Performed Ultrasound-Guided Procedures

IW805 ① Thursday, October 20 | 3 pm–6 pm

**TROY HENNING, DO (Session Director)**

This intensive workshop will focus on regional anatomy live scanning of the wrist and hand structures. An experienced faculty member will guide learners in small groups through the diagnostic scanning of the wrist and hand structures. A lecture-based overview of commonly performed ultrasound-guided procedures about the region will also be provided.



### Hip Ultrasound: Scanning Techniques with Case-Based Clinical Correlation

IW806 ① Thursday, October 20 | 3 pm–6 pm

**JOANNE BORG-STEIN, MD (Session Director)**

This intensive workshop will review the use of ultrasound in the evaluation and management of athletic hip conditions. There will be a discussion and review of interventional techniques that utilize ultrasound guidance. Clinical cases will be presented with relevant ultrasound scanning for diagnosis and management. This will be an interactive, dynamic case-based format, and ample time will be provided for free scanning with faculty.

### Ultrasound Applications of Shoulder Diagnosis and Treatment

IW808 ① Friday, October 21 | 11 am–2 pm

**BRIAN J. KRABAK, MD, MBA, FACSM (Session Director)**

This intensive workshop will focus on the enhancement of clinical skills in the diagnosis and treatment of shoulder-related injuries through the use of ultrasonography. Faculty and attendees will collaborate through an interactive hands-on experience highlighting unique injuries of the shoulder region. Attendees will learn skills to improve their knowledge and modify their practice application of musculoskeletal sonography.

### Lumbar Spine, Abdomen, and Pelvic Pain Procedures with Ultrasound

IW809 ① Friday, October 21 | 3 pm–6 pm

**MARK B. HURDLE, MD (Session Director)**

This intensive workshop will serve as an introduction to the use of ultrasound in the management of lumbar spine, abdomen and pelvic pain conditions, including a discussion of interventional techniques that utilize ultrasound guidance. Image optimization and needle guidance techniques will be covered, followed by a scanning demonstration and hands-on scanning.

## Resident Program\*

Are you a PM&R resident looking for education and networking events tailored specifically for you? Don't miss this year's Annual Assembly! The Annual Assembly is the largest annual gathering of PM&R residents. Using a concise format, this program will provide job search and medical practice information to help guide resident physicians in securing a position and preparing for physiatric practice.

### LEARNING OBJECTIVES

- Understand how to navigate the AAPM&R Job Fair to make contacts and find opportunities.
- Map a strategy for selecting the best practice opportunity based on your skills and preferences.
- Be aware of how the current health care environment may impact job opportunities in PM&R.
- Resume building, job coaching, contractual negotiations, and other essential job preparation needs.
- Utilize the AAPM&R Job Board to search for positions, post your resumes, and use the job search capabilities.



\*Faculty and content subject to change.

## Resident Networking Opportunities

Take advantage of these networking opportunities, designed with you in mind:

- **AAPM&R Job Fair** *(for all attendees)*  
Wednesday, October 19 | 6:30 pm–9 pm
- **Resident Town Hall**  
Friday, October 21 | Evening
- **Residents' Reception**  
Friday, October 21 | Evening
- **Chief Residents' Meeting**  
Saturday, October 22 | 4:30 pm–5:30 pm

**NEW!**



## AAPM&R Resident Quiz Bowl

Join us for the inaugural AAPM&R Resident Quiz Bowl! PM&R residents from across the country can compete for fun and test their PM&R knowledge. Stay tuned to [www.aapmr.org/assembly](http://www.aapmr.org/assembly) for more details.

## Sessions

Wednesday, October 19

2 pm–3:15 pm

**701. You Are Here: Creating Your Path in the PM&R Specialty, Part 1**

CHARLOTTE H. SMITH, MD (Director)

3:30 pm–5 pm

**702. You Are Here: Creating Your Path in the PM&R Specialty, Part 2**

CHARLOTTE H. SMITH, MD (Director)

5:15 pm–6:15 pm

**703. You Get What You Negotiate—Contracting for PM&R Physicians**

KATHY SHEETS, GROUP VICE PRESIDENT

PRESENTED BY THE HOSPITAL CORPORATION OF AMERICA

Thursday, October 20

7:30 am–9 am

**704. Training is Over, Now What? Practical Management Pearls for the Trainee in Musculoskeletal and Sports Medicine**

11:30 am–1 pm

**705. Spinal Interventions for Residents**

More session content details for residents to come.

# Residency Fair

Saturday, October 22 | 1 pm–3 pm  
Ernest N. Morial Convention Center

## PROGRAM DIRECTORS: PARTICIPATE IN THIS YEAR'S PM&R RESIDENCY FAIR

The Residency Fair, held during the Medical Student Program, allows for face-to-face time between program directors and medical students who are interested in PM&R. It introduces medical students to the specialty and what it means to be a physiatrist, plus the fair is a great opportunity to promote your program.

AAPM&R has presented this free program for medical students at the Annual Assembly for the past 8 years, representing PM&R residencies from all across the country. Last year, more than 120 medical students attended, providing extremely positive feedback on the program.

Visit [www.aapmr.org/assembly](http://www.aapmr.org/assembly) if you would like to register your program.



**“ Treloar & Heisel has a deep understanding of every phase of my career.”**

Daniel H. DeTolla, DDS, MD  
Portsmouth, NH

[www.treloaronline.com](http://www.treloaronline.com)

Call 800.345.6040

**aapm&r**

American Academy of  
Physical Medicine and Rehabilitation

**Treloar  
& Heisel**

FINANCIAL SERVICES FOR THE  
DENTAL AND MEDICAL PROFESSIONAL

Securities, investment advisory and financial planning services are offered through qualified registered representatives of MML Investors Services, LLC. Member SIPC [www.sipc.org](http://www.sipc.org). Supervisory Office: Six PPG Place, Suite 600, Pittsburgh, PA 15222 • (412) 562-1600. Treloar & Heisel Wealth Management is not a subsidiary or affiliate of MML Investors Services, LLC or its affiliated companies. MML Investors Services, LLC, its employees and representatives are not authorized to give tax or legal advice. Individuals are encouraged to seek advice from their own tax or legal counsel.

CRN201803-201000



## Networking Activities

AAPM&R's 2016 Annual Assembly offers 4 days of unlimited peer-to-peer networking opportunities—from our prestigious President's Reception at the National World War II Museum to an informal gathering in our Community Network Lounge—there's never a shortage of ways to connect with your colleagues.



# Jobs!

### Job Board

Simplify your job search with AAPM&R's Job Board—[jobboard.aapmr.org](http://jobboard.aapmr.org)—the premier electronic recruitment and job search resource exclusively for physiatrists.

## 2016 AAPM&R Job Fair

Wednesday, October 19 | 6:30 pm–9 pm  
Hilton New Orleans Riverside

**Held 1 day before the Annual Assembly begins!**

### Attendees



Explore the Job Fair floor to discover a variety of available PM&R positions, and to meet representatives from **more than 100 institutions and practices around the country!** Plan ahead and view the interactive floor plan and a list of employers on [www.aapmr.org/assembly](http://www.aapmr.org/assembly). Also watch for the NEW Job Fair Show Guide to help you navigate the Job Fair floor.

#### JOB FAIR QUICK TIPS FOR ATTENDEES

- Don't forget to bring copies of your CV, as onsite interviews may occur.
- Dress for success with your best professional attire.
- Take a moment to post or update your CV and profile on the Physiatrists' Job Board—[jobboard.aapmr.org](http://jobboard.aapmr.org) prior to attending the Job Fair.



### Employers

Find your ideal candidate at the 2016 Job Fair! Bring your recruiting message to the largest PM&R-specific job fair in the U.S. With more than 700 attendees, your institution's participation can provide an efficient, and cost-effective way to find the perfect candidate for your open position(s). On-site interview rooms are available with the opportunity for screening and interviewing live at the event. Download the application at [www.aapmr.org/assembly](http://www.aapmr.org/assembly) to participate or call (847) 737-6038 for more information.



### NEW! Career Corner Booth



Stop by the Career Corner Booth at the Job Fair and in the PM&R Pavilion to learn more about the Academy's career development resources and tools as well as volunteer opportunities to enhance your CV and leadership skills. Meet with representatives from various organizations who will be on-hand to conduct CV reviews and offer career advice. Job Board customer service and Academy staff will also be available to introduce attendees to the only PM&R-specific job search tool in the country. View open positions, find fellowship opportunities, and more with this one-stop career development tool!

Activities on these pages are subject to change.

## Welcome Reception

Thursday, October 20 | 5:30 pm–8 pm

Ernest N. Morial Convention Center

The Welcome Reception is the perfect place to kick-off your Annual Assembly experience! Reconnect with former colleagues, meet new friends, and mingle with our industry partners during the opening night! Held in the PM&R Pavilion, the reception provides an ideal opportunity to socialize and preview this year's array of PM&R products and services. *Guests and children must be registered for admittance to this event.*



## Residents' Reception

Friday, October 21 | Evening

Ernest N. Morial Convention Center

Meet and greet with PM&R residents from across the country during this exclusive networking event! Build your professional network, mingle with friends and colleagues, and more. Annual Assembly resident registration fees include admittance to this reception. *Name badges must be worn to enter—residents only.*



Support for the Residents' Reception has been provided by Treloar & Heisel.



## Community Network Lounge

Thursday, October 20–Saturday, October 22

Ernest N. Morial Convention Center

Are you interested in bringing your social or clinically-specialized community group together at the Annual Assembly? Then take advantage of our Community Network Lounge!

This dedicated space is the perfect place to hold an impromptu meeting or to host a more private gathering (reserved by appointment). The Lounge will be split into 2 sections this year—one location for attendees to come and go as they please and to hold impromptu meetings; the other space to reserve specific appointment times for more private gatherings.

Get your group together and meet face-to-face to ask advice, share your current situation, needs, and thoughts on topics surrounding your clinical interests. Contact [info@aapmr.org](mailto:info@aapmr.org) if you're interested in reserving space in the Community Network Lounge. Rooms will be reserved on a first-come, first-served basis. Be sure to contact the Academy in advance if you are interested in hosting your group.

## Member Council Gatherings



Member Councils are the pathway to transforming your Academy membership into a more powerful resource in the areas of education, research, and advocacy. The Member Council Gatherings are designed to help YOU connect with your peers. Through your Member Councils, you can interact with other Academy members who share your clinical interests, provide input directly to Academy leadership on everything from educational content to legislation, and receive tailored resources relevant to your practice. You also receive a quarterly newsletter developed by your peers by participating in the Councils that align with your clinical area. See the Schedule-at-a-Glance for the days and times of each Council Gathering.



## President's Reception

Friday, October 21 | 7 pm–10 pm

National WWII Museum



Source: National World War II Museum

### Did You Know?

New Orleans is home to the LCVP, or Higgins boat, the landing craft that brought U.S. soldiers to shore in every major amphibious assault of World War II. Andrew Jackson Higgins and the 30,000 Louisiana workers of Higgins Industries designed, built, and tested 20,000 Higgins boats in southeastern Louisiana during the war.



AAPM&R is excited to host its 2016 President's Reception at the incredible venue that celebrates the origin of physiatry, the National WWII Museum. The museum is a fascinating honor to those who sacrificed so much to protect our freedom. WWII marked the beginning of the PM&R specialty and broadened the focus of physical medicine to become a comprehensive restoration of a patient's capabilities as injured soldiers returned home for treatment. During the war, Frank H. Krusen, MD, PM&R pioneer and AAPM&R past president, provided training to nearly 200 "90-day wonder" physicians in the techniques of physical medicine, to be applied to wounded soldiers.

Join us at this inspirational venue, located in downtown New Orleans, to tour the 6-acre campus of historic exhibits, interactive experiences, and assortment of artifacts. Enjoy savory po'boy sandwiches and cuisine from Louisiana's rich style of Creole cooking. This memorable experience, planned just for Annual Assembly attendees and their guests, will top off your week in the historically-rich city of New Orleans.



AAPM&R is pleased to offer tickets at generously discounted prices:

- Member/Resident—\$55
- Nonmember/Resident—\$110
- Spouse/Guest—\$75
- Nonmember Spouse/Guest—\$140
- Child—\$55
- Exhibitor—\$175

Tickets to this event must be purchased separately from Annual Assembly registration fees. Purchase your ticket early, **as there are a limited number of tickets available for this event**. Badges must be worn at all times and tickets must be presented to enter the event. Refer to the registration form (pages 45–48) for purchase information.

Activities on these pages are subject to change.



## Academy Events

Connect with Academy leaders and colleagues during these business meetings.

### AAPM&R Town Hall

**Friday, October 21 | 4 pm–5 pm**  
**Ernest N. Morial Convention Center**

Your AAPM&R Town Hall is designed to be an open-forum; join other influential specialty leaders and have direct dialogue with the Board of Governors! Ask your pressing questions and share your perspective about the Academy and our specialty. This is a can't miss!



### Resident Town Hall

**Friday, October 21 | Evening**  
**Ernest N. Morial Convention Center**

All AAPM&R resident members are invited and encouraged to attend this annual event. As the largest gathering of PM&R residents in the country, the Annual Assembly offers a unique opportunity for resident members to meet and share experiences. This Town Hall will be moderated by the Resident Physician Council (RPC) Board.



### AAPM&R Business Meeting

**Saturday, October 22 | 12:45 pm–1:45 pm**  
**Ernest N. Morial Convention Center**

All AAPM&R fellows are invited and encouraged to attend this Annual Business Meeting to vote on nomination recommendations, approve the membership roster, consider bylaw amendment proposals, review 2016 activities, and preview 2017 Academy initiatives.



### Chief Residents' Meeting

**Saturday, October 22 | 4:30 pm–5:30 pm**  
**Ernest N. Morial Convention Center**

Are you curious to learn how other chief residents operate their PM&R residency programs? Do you need to create a network of peers to find new and innovative programs and solutions? Then this session is perfect for you! Hear chief residents share best practices, learn the “ins and outs” of PM&R residency operations, and participate in an interactive dialogue. This is a great opportunity to build your network of lifelong colleagues.



## The PM&R Pavilion

(Formerly known as the Exhibit Hall)

The PM&R Pavilion is the largest gathering of companies displaying products and services specifically for PM&R physicians. The PM&R Pavilion is your place to network with peers, meet with industry experts, experience state-of-the-art treatments, and have your questions answered by representatives from more than 175 companies around the world.

### PM&R PAVILION HOURS:

Thursday, October 20  
5:30 pm–8 pm

Official Opening and Welcome Reception

Friday, October 21  
9 am–3 pm

Coffee service, breaks, and lunch for purchase

Saturday, October 22  
9 am–2:30 pm

Coffee service, breaks, and lunch for purchase



Content subject to change.

## AAPM&R Product Theaters

Product Theaters are 60-minute sessions, which highlight issues such as patient education, specific products, and therapeutic areas. Product Theater presentations are independent and do not offer CME credit. Visit [www.aapmr.org/assembly](http://www.aapmr.org/assembly) for the most up-to-date schedule and information on these unique learning opportunities.

### Adult Focal Spasticity Today

Thursday, October 20 | 1 pm–2 pm

Ernest N. Morial Convention Center

This informative and engaging presentation discusses the latest addition to your treatment armamentarium for adult focal spasticity, with a focus on the lower limbs. It features clinical data and appropriate patient types along with interactive videos and simulations that showcase an effective treatment approach.

Presented by:  ALLERGAN

### Is It Really Depression? Patient Identification Diagnosis and Treatment of Pseudobulbar Affect (PBA)

Friday, October 21 | 12:45 pm–1:45 pm

Ernest N. Morial Convention Center

SPEAKER: JASON P. CAPLAN, MD

Presented by: Otsuka Pharmaceuticals



### Interactive Product Theater

Saturday, October 22 | 12:45 pm–1:45 pm

Presented by:  IPSEN  
Innovation for patient care



## Movement Competition

AAPM&R will once again host the Movement Competition, sponsored by Allergan! With all the distance we travel during the Assembly, why not track it? This friendly competition encourages you to measure your distance traveled each day, tracked via a pedometer or mobile app.

The names of attendees logging the greatest distance will appear on leader boards each day throughout the Assembly. Prizes will be awarded to the top movers! Join the fun and get motivated to MOVE during #AAPMR2016!

Sponsored by:  ALLERGAN



## Satellite Symposia

AAPM&R allows third-party sponsored CME activities called Satellite Symposia. The third-party often garners support for their activity from industry. Third-party CME providers are required to follow all guidelines outlined by ACCME.

### Cutting Primary and Secondary ACL Injury Risk with Newly Sharpened Tools

Thursday, October 20 | 7:45 pm–9 pm

Hilton New Orleans Riverside

Mayo Clinic designates this live activity for a maximum of 1.5 *AMA PRA Category 1 Credits*<sup>™</sup>. Physicians should claim only the credit commensurate with the extent of their participation in the activity.\*

Supported by Mayo Clinic

### Strategies for Combating Opioid-Induced Constipation: Targeted Mechanisms to Maintain Pain Control Without Compromise

Friday, October 21 | 6:15 pm–7:30 pm

Hilton New Orleans Riverside

The Elsevier Office of Continuing Medical Education is accredited by the Accreditation Council for Continuing Medical Education (ACCME) to provide continuing education for physicians. The Elsevier Office of Continuing Medical Education designates this enduring material for a maximum of 1.25 *AMA PRA Category 1 Credits*<sup>™</sup>. Physicians should claim only the credit commensurate with the extent of their participation in the activity.

Find a full description and register at:

<https://tfaforms.com/427349>.

Jointly provided by the Elsevier Office of Continuing Medical Education and Miller Medical Communications, LLC and is supported by an educational grant from AstraZeneca.

---

Your organization can participate and present the latest in research and innovation. For more information on hosting a Satellite Symposia at the Annual Assembly, contact Lisa Koch at [lkoch@conventusmedia.com](mailto:lkoch@conventusmedia.com).

---



Happening in the  
PM&R Pavilion

## Wheelchair Basketball Tournament\*

We're bringing some friendly competition to the Assembly with a wheelchair basketball tournament. Stop by the PM&R Pavilion during Thursday's Welcome Reception, and during lunch on Friday and Saturday to cheer on our participants! Stay tuned to [www.aapmr.org/assembly](http://www.aapmr.org/assembly) for sign-up details.

\*Subject to cancellation based on registration numbers.



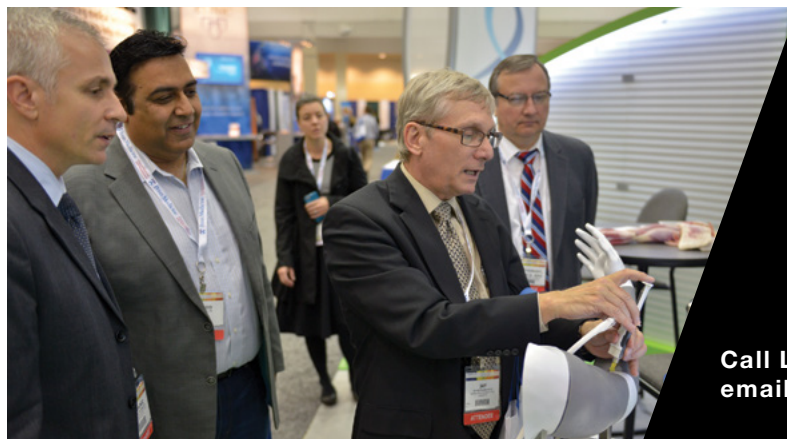
2016 Exhibitors (as of May 11, 2016)

COMPANY	BOOTH	COMPANY	BOOTH
AcCELLerated Biologics, LLC	802	Centre for Neuro Skills	637
ActivAided Orthotics	906	Children's Healthcare of Atlanta Rehab Services	903
Addison Health Systems/WritePad™	707	Children's Specialized Hospital	901
Allard USA, Inc.	322	CID Management	1009
Allergan	513	Cleveland Clinic	1031
AllMeds EHR & Practice Management	607	Corinthian Reference Lab	428
AlterG	835	Cosman Medical	1011
Ambu, Inc.	917	Cutting Edge Laser Technologies	529
American Academy of Orthopaedic Surgeons	509	Daiichi Sankyo, Inc.	1100
American Association of Neuromuscular and Electrodiagnostic Medicine	426	Demos Medical Publishing	1001
American Board of Physical Medicine and Rehabilitation	327	Depomed, Inc.	1002
American Medical Rehabilitation Providers Association	602	DIERS Medical Systems	241
American Osteopathic College of Physical Medicine & Rehabilitation	930	Easy Walking, Inc.	410
ARDMS	735	Ekso Bionics	201
Aretech, LLC	628	Elsevier – Archives of PM&R, an Elsevier Publication	104
Arthrex, Inc.	500	Enemeez®	1000
Aspen Medical Products	800	Epimed International, Inc.	807
Association of Academic Physiatrists (AAP)	337	Farr Healthcare	108
Basic Home Infusion	734	Foundation for PM&R	538
Bauerfeind USA, Inc.	801	Frazier Rehab Institute	910
Baylor Institute for Rehabilitation	1007	Fujifilm Sonosite	223
Bioness, Inc.	715	GE Healthcare	422
BioRich Medical	507	Gensco Laboratories	1006
Boiron	928	Gorbel Medical	413
Bonafide Management Systems	536	Halyard Health	907
Brooks Rehabilitation	235	Hanger Clinic	902
BTE	609	Harvest Technologies	124
Byram Healthcare	336	HealthSouth Corporation	706
Cadwell Laboratories, Inc.	213	Hocoma, Inc.	307
Calmoseptine, Inc.	129	Hospital Corporation of America	436
Carolinas Rehabilitation	406	Infinite Therapeutics	329
		Integrated Rehab Consultants	911
		Ipsen Biopharmaceuticals, Inc.	101



At more than 150 years old, New Orleans City Park is one of the country's oldest and most beautiful urban parks. The park encompasses 1,300 acres, including miles of walking, jogging, and biking trails, and outdoor exercise equipment.

COMPANY	BOOTH	COMPANY	BOOTH
Jazz Pharmaceuticals, Inc.	110	Purdue Pharma, L.P.	301
Joint Active Systems, Inc.	126	Quell by NeuroMetrix	1127
Kennedy Krieger Institute	908	Regenexx	934
Kessler Institute for Rehabilitation	407	Reha Technology USA	815
LIM Innovations	341	Restorative Therapies	709
Lipogems	1008	ReWalk™ Robotics	425
LocumTenens.com	634	Rochester Electro-Medical, Inc.	122
Logistics Health Incorporated	808	Rusk Rehabilitation at NYU Langone Medical Center	809
Mallinckrodt Pharmaceuticals	523	Salix Pharmaceuticals, Inc.	335
Mary Free Bed Rehabilitation Hospital	1123	Saol Therapeutics	228
Mayo Clinic	823	SI-BONE, Inc.	608
MedStar National Rehabilitation Network	317	Spaulding Rehabilitation Network	829
Medtronic, Inc.	111	Spectrum Health Medical Group	1130
Merz Pharmaceuticals, LLC	209	Stim Designs LLC	431
MicroAire Surgical Instruments	600	Summit Medical Products	1103
MIH International, LLC/M-Brace	635	Terason	323
Miner/Mason & Associates	131	The Electrode Store	617
Mitek Sports Medicine	408	The Orthobiologic Institute (TOBI)	1003
Moss Rehab	923	TOTO USA, Inc.	438
Motekforce Link BV	810	Treloar & Heisel, Inc.	834
Mount Sinai Health System	1107	Turing Pharmaceuticals	1015
MSKUS	530	U.S. Physiatry, LLC	909
Multi Radiance Medical	1131	Uniform Data System for Medical Rehabilitation	716
Natus Neurology, Inc.	701	University of Kansas Department of Physical Medicine & Rehabilitation	1010
Nihon Kohden America	116	University of Utah	128
Ossur Americas	501	US WorldMeds	606
Otsuka America Pharmaceutical, Inc.	1108	Vanderbilt University Medical Center Dept of PM&R	710
P & S Mechanics	123	Vitamix	435
Parker Hannifin	229	Wellspect HealthCare	1106
Pernix Therapeutics	506	Wolters Kluwer	806
Phoenix Children's Hospital	900		
Physician Life Care Planning	927		
ProtoKinetics Gait Analysis Walkways	401		
ProtoStar, Inc.	535		



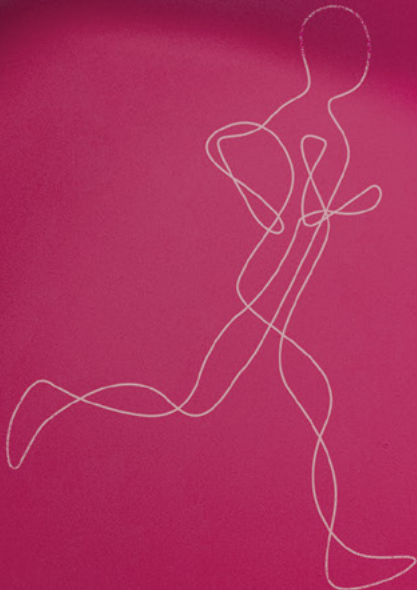
Which companies do you want to see in the PM&R Pavilion?

Call Lisa Koch at (978) 777-8870 or email [exhibits@conventusmedia.com](mailto:exhibits@conventusmedia.com).

## AAPM&R and Industry Introduction

AAPM&R welcomes industry involvement as a way to help AAPM&R reach its established mission and vision while limiting the financial burden on its members. The AAPM&R Board of Governors (BOG) and AAPM&R Corporate Relations Committee (CRC) are committed to maintaining valued industry relationships without compromising the independence and credibility of AAPM&R activities and programs. As such, the Academy, officers, faculty, and staff follow guidelines, policies, and processes that are based on, and usually surpass recommendations from, the Accreditation Council for Continuing Medical Education (ACCME), American Medical Association, and the Council of Medical Specialty Societies.

AAPM&R, its officers, and staff do not endorse or promote any company involved in this year's Annual Assembly. For more information about AAPM&R policies, which focus on relationships with industry, CME, disclosure, transparency, and compliance, please email [info@aapmr.org](mailto:info@aapmr.org).



### INDUSTRY INVOLVEMENT AT THE AAPM&R ANNUAL ASSEMBLY DEFINED

The BOG and CRC would like to take a moment to inform you of various ways industry involvement is included in this year's Annual Assembly.

### AAPM&R CME PROGRAMMING

AAPM&R is an accredited provider (with commendation) of CME by the ACCME. As such, AAPM&R develops and provides CME activities that are free from the influence, bias, and input of industry. AAPM&R has sole responsibility of selecting program topics, faculty, and planning program content and has established policies and guidelines for disclosing and resolving relevant financial relationships and conflicts.

### EDUCATIONAL GRANTS

AAPM&R sometimes obtains financial and/or in-kind support from industry for CME activities through educational grants. Companies sign letters of agreement documenting strict compliance with all established guidelines and policies.

### PRODUCT THEATERS

AAPM&R allows (for a fee) industry to host Product Theaters, which are independent, non-CME sessions offered at the Annual Assembly.

### SATELLITE SYMPOSIA

AAPM&R allows third-party sponsored CME activities called Satellite Symposia. The third-party often garners support for their activity from industry. This third-party CME provider is required to follow all guidelines outlined by ACCME.

### PM&R PAVILION

Exhibiting companies pay a fee to exhibit their products and services. Companies are required to follow local, state, and national laws in regard to the promotion and position of their product and/or service.

### ADVERTISING

Companies that advertise pay a fee to include an advertisement in AAPM&R's publications.

Companies are required to follow local, state, and national laws in regard to the promotion and position of their product and/or service.

### SPONSORSHIPS

Companies may sponsor (for a fee), products, services or events (i.e., banners, lanyards, reception, etc.). In all cases listed above, AAPM&R expects that corporations will follow applicable local, state, and federal laws and guidelines. Also, AAPM&R will acknowledge and disclose all corporate supporters, sponsorships or relationships, but does not endorse any companies or their products or services.



# 2016 Corporate Support Recognition

AAPM&R gratefully acknowledges the companies listed below for their support in 2016 (as of May 10, 2016). This support allows AAPM&R to carry out its mission. A complete list of 2016 supporters will appear in the *Official Program*, distributed onsite at the Annual Assembly.

## PLATINUM LEVEL



## SILVER LEVEL



PLEASE NOTE: Due to compliance reasons, educational grant amounts are not included in determining the level of support (e.g., platinum, gold, silver).

Please join AAPM&R in thanking its sponsors and program participants!



### 2016 Industry Relations Council (IRC) Participants

#### TIER 1

Allergan, Inc.  
Merz

#### TIER 3

IPSEN Biopharmaceuticals, Inc.  
Mallinckrodt Pharmaceuticals  
Medtronic

#### TIER 4

Avanir Pharmaceuticals, Inc.  
Purdue Pharma, LP



### 2016 Institution Partners Council (IPC) Participants

#### TIER 1

MedStar National Rehabilitation Network  
Rusk Rehabilitation at  
NYU Langone Medical Center  
SIMED  
Spaulding Rehabilitation Hospital  
University of Louisville

#### TIER 2

Shepherd Center

#### TIER 3

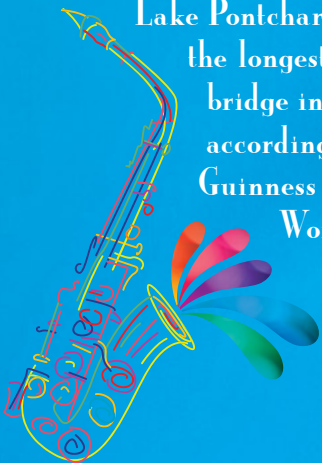
UT Southwestern

Participate in these programs! Email [corporatesupport@aapmr.org](mailto:corporatesupport@aapmr.org) or call (847) 737-6048.

## Non-Academy Activities



New Orleans is home to the Lake Pontchartrain Causeway, the longest continuous bridge in the world, according to the Guinness Book of World Records.



### ABPMR Town Hall

Friday, October 21 | 3 pm–4 pm

Ernest N. Morial Convention Center

Hosted by current American Board of Physical Medicine and Rehabilitation (ABPMR) board directors, this open forum-style session will allow participants to comment, make suggestions or ask questions related to the entire scope of board certification and Maintenance of Certification® (MOC®).

### ABPMR How-to Session: Walking You Through a PIP\*

Friday, October 21 | 11 am–12:30 pm

Ernest N. Morial Convention Center

Following a brief overview of options and resources for completing MOC Part IV—Practice Improvement Project (PIP)—ABPMR board directors and quality improvement experts will guide participants step-by-step through the PIP process, including time for peer discussion and personalized advice from the experts.

\*This does not offer CME.

### Test Your Knowledge with Self-Assessment Examinations for Practitioners (SAE-Ps)

- SAE-Ps offer an easy-to-follow, interactive format.
- Comprehensive commentary and references for each question are provided upon completion.
- Earn up to 8 *AMA PRA Category 1 Credits™* for each completed SAE-P.
- Helps meet part II of your ABPMR MOC requirement.

#### AAPM&R offers SAE-Ps on a variety of topics, including:

- Advanced Sports Medicine—*new in 2016!*
- Pain Management
- Regenerative Medicine
- Concussion and Brain Injury
- Musculoskeletal Medicine
- Spasticity
- And more!

Visit [me.aapmr.org](http://me.aapmr.org) for the full catalog of Academy resources.

# Foundation for Physical Medicine & Rehabilitation Activities



## Donor Appreciation Reception

(by invitation only)

Thursday, October 20 | 7:30 pm–9 pm

Once a year, the Foundation for PM&R has the opportunity to thank our donors for their support in a social setting. The reception will also feature this year's Research Grant Award winners presenting brief summaries of their winning research proposals.

## “Proof of the Pudding” Debate

Thursday, October 20 | 9 pm–9:30 pm

Hilton New Orleans Riverside

End your day with complimentary coffee and dessert while listening to experts debate a controversial topic in physiatric medicine selected from the point/counterpoint series in the *PM&R* Journal. George Kevorkian, MD, will moderate. Stuart Weinstein, MD, editor-in-chief of *PM&R*, will also present the *PM&R* Journal's Best Paper Award.

## Foundation for PM&R Booth in the PM&R Pavilion

October 20–22

Open during regular PM&R Pavilion hours; see page 30.

Meet members of the Foundation for PM&R Board of Directors, get information about the Foundation for PM&R research grants and awards program, learn about the Americans with Disability Fund's focus on fitness, register for the Rehab 5K Run/Walk & Roll, and pick up bibs and t-shirts for the run.



We're offering a mobile app this year! You will be able to build your personal schedule, access maps, speaker information, and an attendee list, as well as find exhibitors that match your clinical interests. Stay tuned to [www.aapmr.org/assembly](http://www.aapmr.org/assembly) for app details and download instructions.



## Rehab 5K Run/Walk & Roll

Friday, October 21 | 6:30 am

New Orleans Riverfront

Join your colleagues for this early morning run. Participants who are preregistered can pick up their race packets at the Foundation for PM&R booth. (Registration is also available onsite, but late fees apply.) This is a fundraising event to raise money for physiatric research. Additional donations and sponsorship of participants is encouraged.

## Scott F. Nadler PASSOR Musculoskeletal Research Grant Winner and PASSOR Legacy/Lectureship Award

Friday, October 21 | 7:30 am–9 am

Ernest N. Morial Convention Center

Michael Fredericson, MD, Stanford University, will present the results of his 2015 Scott F. Nadler PASSOR Research Grant study, “Prevention of Bone Stress Injuries Through Nutritional Intervention in Male and Female Distance Runners.”



**ANNUAL ASSEMBLY MEETING SITE**

All educational sessions, registration, scientific posters, and the PM&R Pavilion will be held at:

**Ernest N. Morial Convention Center**

900 Convention Center Boulevard  
New Orleans, LA 70130

Depending on which of the 4 Assembly hotels you choose to stay, the Ernest N. Morial Convention Center is just a short walk down the block or across the street. In addition, the Hilton New Orleans Riverside is connected to the Outlet Collection at the Riverwalk, a mall that provides a quick stop for coffee, snacks or a forgotten travel item.

**ACCOMMODATIONS**

In planning for the meeting, AAPM&R exclusively reserved a number of discounted rooms (including ADA-accessible rooms) at the following hotels:

**Hilton New Orleans Riverside (Headquarters)**

2 Poydras Street  
New Orleans, LA 70130

Single/Double Occupancy—\$252/night

**Hampton Inn & Suites New Orleans Convention Center**

1201 Convention Center Boulevard  
New Orleans, LA 70130

Single/Double Occupancy—\$190/night  
Triple/Quad Occupancy—\$200/night

**Hyatt Place New Orleans/Convention Center**

881 Convention Center Boulevard  
New Orleans, LA 70130

Single/Double Occupancy—\$217/night  
Triple Occupancy—\$237/night  
Quad Occupancy—\$257/night

**Omni Riverfront Hotel**

701 Convention Center Boulevard  
New Orleans, LA 70130

Single/Double Occupancy—\$220/night

The Academy works diligently to negotiate the lowest group rates at hotels that offer adequate meeting space, appropriate amenities, and opportunities to network with your colleagues. Reservations are made on a first-come, first served basis.

**The cutoff date for the discounted hotel rooms is**

**September 15, 2016** and is subject to room and rate availability.

In booking your reservation, you may be asked to put down a one-night, non-refundable deposit to ensure that Assembly attendees are able to secure a room at the hotel. Please have your credit card information on hand at the time of booking.

**Visit [www.aapmr.org/assembly](http://www.aapmr.org/assembly) to book your room.**

**TRAVEL AGENT**

World Wide Travel Management, Inc., is the official travel partner for AAPM&R. Worldwide Travel Management charges a \$25 transaction fee per ticket. Additional charges will occur when calling outside of the hours below.

**Phone:** (800) 332-9433 or (773) 334-0900

**Contact:** Jennifer or Saira

**Hours:** Monday–Friday: 8:30 am–5 pm (CST)



*New Orleans was rated one of the "World's Friendliest Cities"*

*by Travel+Leisure!*

## What to Do in New Orleans

New Orleans is a singularly unique destination, rife with the charm and atmosphere of an old, European city. Shaded by centuries-old oak trees, the streets of New Orleans are lined with Creole cottages, cast-iron balconies, and Spanish townhomes in rainbows of color. A stroll through the city is a true, sensory experience—you will hear live music spilling into the streets and enjoy the scents of Cajun spices wafting from cafés. To help sort through the abundance of options New Orleans has to offer, AAPM&R has created a custom site for Annual Assembly attendees to help plan your stay. You can find tours, dining options, maps, coupons, and discounts at [www.neworleanscvb.com/aapmr](http://www.neworleanscvb.com/aapmr) all in one stop!

**Here is just a sampling of the ways to enjoy your time in New Orleans:**

### AIRPORT INFORMATION

Schedule your flight through Louis Armstrong New Orleans International Airport (MSY), an approximately 20-minute drive to the Assembly hotels and Ernest N. Morial Convention Center.

### GROUND TRANSPORTATION OPTIONS

For a complete list of ground transportation options, please visit the Louis Armstrong New Orleans International Airport's website at [www.flymsy.com/Transportation-Parking](http://www.flymsy.com/Transportation-Parking).

### TAXIS

Taxis are readily available on the lower level of the airport, outside of baggage claim. A one-way trip to downtown New Orleans is approximately \$35, not including gratuity.

### SHUTTLE TRANSPORTATION

Shuttle service is available from the airport to all Assembly hotels for \$24/person one-way trip; \$44/person round-trip. Advanced reservations are recommended and can be made at [www.airportshuttleneworleans.com](http://www.airportshuttleneworleans.com). For ADA-accessible transfers, advanced reservations are required 48 hours prior to your arrival date. Please visit [www.airportshuttleneworleans.com](http://www.airportshuttleneworleans.com) for reservations and assistance.

### CAR RENTAL

There are 9 car rental agencies at the airport. For reservations, please visit [www.flymsy.com/Transportation-Parking](http://www.flymsy.com/Transportation-Parking) and select "Rental Information." Rental policies, services, and rates are subject to change and may vary among companies.

### DRIVING DIRECTIONS

For detailed driving directions from any location, visit [www.google.com/maps](http://www.google.com/maps) or use your GPS device and enter the address to the convention center or hotels listed on the previous page.



Made famous by Tennessee Williams' *A Streetcar Named Desire*, hop on a New Orleans streetcar to explore the city and riverfront.



Discover why New Orleans is known as America's Most Haunted City, and join one of the city's many ghost or cemetery tours.



Stop in one of the city's many Greek Revival mansions or Creole cottages to admire the beautiful architecture, courtyards, and gardens.

### PARKING

In addition to the rates provided below, there are several parking lots available around the convention center and downtown area. Visit [www.neworleans.bestparking.com](http://www.neworleans.bestparking.com) for complete parking information, including rates, garage hours, addresses, and photos of the lot locations. A map of parking lot locations can also be found on [www.aapmr.org/assembly](http://www.aapmr.org/assembly).

#### Ernest N. Morial Convention Center

The closest available parking lot to the convention center is located right across the street, on Convention Center Boulevard. Parking is \$10/per in-and-out trip.

#### Hilton New Orleans Riverside

Garage parking fee—\$38/day, with in/out privileges  
Valet parking fee—\$48/day

#### Hampton Inn & Suites New Orleans Convention Center

Valet parking fee—\$38/day, with overnight and in/out privileges

#### Hyatt Place New Orleans/Convention Center

Valet parking fee—\$34/day, with overnight and in/out privileges

#### Omni Riverfront Hotel

Valet parking fee—\$34/day, with overnight and in/out privileges

The average New Orleans temperature in October is **70°F!**



## Accessibility at the Annual Assembly

In preparation for the 2016 Annual Assembly, the Academy collaborated with a disability affairs specialist from Jefferson Parrish, LA. This representative joined Academy staff on a site visit to New Orleans to tour the Ernest N. Morial Convention Center, the official Assembly hotels, and the President’s Reception venue, to ensure that the 2016 Annual Assembly events are accessible to all participants. This thorough assessment was documented in a detailed site survey and made available in the Accessibility Information section of the Annual Assembly website.

### ADA STATEMENT

AAPM&R conferences are ADA compliant. We strive to take the appropriate steps required to ensure that no individual with a disability is excluded, denied services, segregated, or otherwise treated differently. Individuals requiring special assistance must contact the AAPM&R Meetings Department for further information and make the appropriate notation on the registration form. All requests for special accommodations under ADA must be made allowing enough time for evaluation and appropriate action by the Academy.

### MEDICAL EQUIPMENT REQUESTS

Attendees and guests who require special medical equipment during the course of the Annual Assembly are encouraged to order such equipment in advance. Scootaround is the preferred vendor of AAPM&R for Academy events, and recommends making arrangements for equipment 1–2 weeks prior to your arrival in New Orleans. Scooter and wheelchair rentals are available by contacting Scootaround Inc. at their toll-free hotline, (888) 441-7575.

### ADA ACCESSIBLE VEHICLES

The following transportation companies are happy to assist passengers that require special assistance, or are accompanied by a service animal. Advanced reservations are strongly recommended.

**Airport Shuttle New Orleans**  
 (866) 596-2699  
[www.airportshuttleneworleans.com](http://www.airportshuttleneworleans.com)

**New Orleans Carriage Cab**  
 (504) 684-4440  
[www.neworleanscarriagecab.com](http://www.neworleanscarriagecab.com)

**Alert Transportation**  
 (504) 362-4145  
[www.alerttransportation.com](http://www.alerttransportation.com)

## New Orleans Map



### Legend

1. Hilton Riverside
2. Hampton Inn & Suites Convention Center
3. Hyatt Place Convention Center
4. Omni Riverfront
5. Ernest N. Morial Convention Center
6. National World War II Museum



# General Information

## GENERAL DISCLAIMER

By virtue of participation, meeting registrants grant to the American Academy of Physical Medicine and Rehabilitation (AAPM&R), its representatives, and employees the right to take photographs of them in connection with the 2016 AAPM&R Annual Assembly. It is agreed that AAPM&R may use such photographs of registrants with or without the registrant's name and for any lawful purpose, including (for example) such purposes as publicity, illustration, advertising, and web content.

## ATTIRE

Semi-casual business wear is recommended for the Annual Assembly. We suggest you dress comfortably and have a jacket or sweater available in case you find the meeting rooms to be chilly.

## INTERNET ACCESS

AAPM&R will offer free wireless Internet access at the 2016 Annual Assembly! Complimentary wireless Internet will be available at the Ernest N. Morial Convention Center for laptop and smartphone users, and will be accessible in all Annual Assembly common areas, session rooms, and lobby spaces. An email access station will be located at the convention center for those who are not bringing a computer to the meeting.

## ON-SITE REGISTRATION SCHEDULE

### Ernest N. Morial Convention Center—Level 1

Wednesday, October 19	1 pm–7 pm
Thursday, October 20	6:30 am–8 pm
Friday, October 21	7 am–6 pm
Saturday, October 22	7 am–6 pm

## LETTER OF INVITATION TO OBTAIN VISA

AAPM&R looks forward to welcoming our international colleagues to the 2016 Annual Assembly in New Orleans, Louisiana. For those colleagues who need to obtain a visa, please know that while we are unable to intervene with either the U.S. Embassy abroad or with the State Department on a participant's behalf, we will offer a letter of invitation to assist. Please contact Member Services at [info@aapmr.org](mailto:info@aapmr.org) and be sure to include the following information, in addition to any specific information required for a United States visa in your home country:

- Full name, including designation or degree
- Institution or hospital
- Complete mailing address
- Email address
- Phone number
- Fax number
- Date of paper presentation and paper title (if applicable)
- Identify if you are attending the conference as a participant or as an exhibitor
- Passport number
- Date of birth
- Gender

For information on obtaining a temporary U.S. visa in order to attend the Annual Assembly, please refer to <http://travel.state.gov/content/visas/en.html> and make an appointment with the U.S. Embassy or Consulate.

We highly recommend AAPM&R Annual Assembly attendees review the typical visa processing timelines within their home country, as it could take several months to receive a visa due to increasing delays in securing visas to the U.S.

## LUNCH AND MEAL OPTIONS—LUNCH VOUCHERS

AAPM&R offers a networking program to help reduce attendee lunch expenses.

The Academy will provide vouchers to each attendee with their badge materials that can be used to offset the price of lunch on Friday, October 21, and/or Saturday, October 22. Food and beverage options may be purchased at cash-and-carry stations throughout the PM&R Pavilion on Friday and Saturday. Meals are also offered at Product Theaters and Satellites.

## FITNESS AND EXERCISE AT THE ASSEMBLY—WALKING AND JOGGING PATHS

The beautiful fall weather in New Orleans is ideal for exercising outdoors. There are several running paths that take you off the busy sidewalks of downtown and onto comfortable trails. An Internet search for "jogging paths in New Orleans" will provide you with a variety of different routes through many areas of the city and its surrounding neighborhoods.

## REGISTRATION DEADLINES

### Wednesday, August 24, 2016

Deadline for Early Bird discounted registration fees.

### Friday, September 30, 2016

All registrations received via mail must be postmarked by this date.

### Friday, October 7, 2016

All registrations received via fax must be postmarked by this date.

## TIME ZONE

New Orleans, LA is Central Standard Time (CST).

## NEW ORLEANS WEATHER

Enjoy warm, pleasant weather and cooler nights in New Orleans during October. Temperatures can range between 80°F during the day and 60°F at night. Light layers are recommended for comfort during the evenings. Up-to-date information is available at [www.weather.com](http://www.weather.com); search using zip code 70130 for New Orleans, LA.

## INTERFAITH GATHERING ROOM

When selecting dates for our Annual Assembly, we do our best to respect religious holidays. To assist our members attending the Assembly, the Academy offers an Interfaith Gathering Room that may be used for religious practices. If you'd like to request a gathering room, contact: [meetings@aapmr.org](mailto:meetings@aapmr.org) prior to the event.

In 2016, the Assembly falls during the Jewish Holiday Sukkot. For our members who wish to attend the Annual Assembly and observe the holiday, visit [www.aapmr.org/assembly](http://www.aapmr.org/assembly) for more details.



CAROLINAS REHABILITATION

## Excellence in Rehabilitation for Over 65 Years

As part of Carolinas HealthCare System, Carolinas Rehabilitation is among the nation's most trusted providers of rehabilitative care and one of the largest not-for-profit rehabilitation hospitals in the United States.

### What Sets Us Apart:

- The world's first CARF Accredited cancer rehabilitation program
- Academic teaching hospital
- Development of EQUADR<sup>SM</sup> to measure quality outcomes specific to rehabilitation
- Involvement in research and clinical trials.

To learn more, call Carolinas Rehabilitation at **877-REHAB51** or visit [CarolinasHealthCare.org/Rehabilitation](https://CarolinasHealthCare.org/Rehabilitation).



Carolinas HealthCare System



## Registration Q&A

There are 3 ways to register for the Annual Assembly:

- **Online.** Visit [www.aapmr.org/assembly](http://www.aapmr.org/assembly) to register now.
- **Via mail.** Mail your completed registration form with payment by **September 30** to the P.O. Box listed on the registration form.
- **Via fax.** Registrations with credit card payments can be faxed until **October 7** at 4 pm (CST), to (847) 563-4191. After this date/time, all registrations must be completed online or in person at the Assembly.

### WHAT EDUCATIONAL SESSIONS DO I HAVE TO REGISTER FOR?

Only preconference courses and ticketed workshops require additional registration fees. Each attendee may preregister for 3 ticketed workshops and any of the intensive workshops. For the benefit of all attendees, workshops have limited attendance to maintain the integrity of this learning experience. To be eligible for the Wednesday afternoon intensive workshop, you must register for Thursday only or for the full conference.

### WHAT ARE THE PRECONFERENCE COURSES?

- **Wednesday, October 19**  
**Coding and Reimbursement: Avoiding Audits and Denials**
- **Wednesday, October 19**  
**Clinical Applications of Ultrasound**
- **Wednesday, October 19**  
**Regenerative Medicine: Current Concepts and Brave New Paradigms in the Treatment of Musculoskeletal Conditions**
- **Wednesday, October 19**  
**Building and Maintaining Medicolegal Work in Your Psychiatric Practice**

See pages 5–8 for detailed information, and use the registration form on pages 45–48 to register.

### HOW DO I REGISTER FOR 90-MINUTE TICKETED WORKSHOPS?

Refer to workshops and their descriptions at [www.aapmr.org/assembly](http://www.aapmr.org/assembly). This will serve as a guide for choosing which workshops are right for you. On the registration form on pages 45–48, rank your first 6 workshop choices in order of preference (1–6).

You will be preregistered for up to 3 of your highest-ranked, available workshops. Workshops are assigned on a first-come, first-served basis upon receipt of paid registration, so register early for the best selection!

Be sure to complete the registration form in its entirety to avoid registration processing delays. You must be registered for the Annual Assembly to register for a workshop.

Note: Workshops are subject to cancellation 4 weeks prior to the activity date if fewer than 10 people are registered. Attendees will be contacted and given the option to transfer to another open workshop or receive a refund.

### WHAT DO I NEED TO KNOW ABOUT THE 3-HOUR INTENSIVE WORKSHOPS?

Each 3-hour intensive workshop will be limited to 36 participants. You must be registered for the Annual Assembly to register for an intensive workshop. Registration for the intensive workshops is on a first-come, first-served basis and does not affect your ability to register for 90-minute workshops.

Turn to page 22 to find out which intensive workshops are being offered this year.

### WHAT DOES MY REGISTRATION FEE COVER?

- Admission to all educational sessions (except limited attendance workshops)
- Refreshment breaks
- Admission to the PM&R Pavilion (includes Thursday evening Welcome Reception)
- \$5 in vouchers toward lunch on Friday or Saturday in the PM&R Pavilion
- Job Fair
- Learning Lab: Ultrasound—**NEW!** *Hands-on Learning Experience on Thursday!*
- Interactive Arcade: *REMS Playbook for Opioid Prescribing*—**NEW!**
- Cancer Rehabilitation Summit: Integration into Practice—**NEW!**
- Mobile App—**NEW!**
- CME credit processing (you will need to claim your CME first)

Your registration fee does not include preconference courses, ticketed 90-minute or 3-hour workshops, or the President's Reception at the National World War II Museum.

### DOES MY ANNUAL ASSEMBLY REGISTRATION FEE COVER MY ADMISSION TO THE PRESIDENT'S RECEPTION?

The President's Reception is not included in any of the Assembly registration fees and requires the purchase of a separate ticket for member, nonmember, spouse/guest, and child. AAPM&R is excited to offer this one-of-a-kind experience, valued at \$175 a person, at generously discounted prices: member/resident—\$55; nonmember/resident—\$110; spouse/guest (age 21+)—\$75; nonmember spouse/guest—\$140; child (ages 3–20)—\$55. Badges and tickets are required for entry and badges must be worn at all times. Please purchase your ticket through the registration form (see pages 45–48).

\*Faculty and agenda are subject to change.



## Spouse/Guest Registration for the Meeting

The Spouse/Guest registration fee is \$35/person and allows admittance to the Job Fair, Welcome Reception, and educational sessions. Tickets for the President's Reception are available for purchase separately from the Spouse/Guest Annual Assembly registration fees. Please make the proper notation and include payment on the registration form (see pages 45–48).

## Children and Infant Policy for the Meeting

Children ages 3–20 years, who wish to attend select Academy functions, must be registered for the Annual Assembly. Registration for children ages 3–20 years is \$15 per child and includes admittance to the Welcome Reception on Thursday evening. Children must be accompanied by a registered adult attendee and wear badges for admittance.

For the safety of all attendees, infants and children are prohibited from attending any educational sessions.

Tickets for the President's Reception are available for purchase separately from the child Annual Assembly registration fees. Please make the proper notation and include payment on the registration form (see pages 45–48).

## Children and Infant Policy in the PM&R Pavilion

Children ages 12–20 years, who are registered for the Annual Assembly, are invited into the PM&R Pavilion during show hours on Friday and Saturday. Children must be accompanied by a registered adult attendee and wear their badge for admittance. Under no circumstances are children allowed in the PM&R Pavilion during the hours of set up and tear down.

## Annual Assembly Cancellation Policy

All cancellations for the Annual Assembly must be submitted in writing via email to [registration@aapmr.org](mailto:registration@aapmr.org) or via mail postmarked by September 8, 2016 to qualify for a refund to the Academy National Office Member Services department:  
American Academy of Physical Medicine and Rehabilitation  
Attention: Member Services, AA2016  
9700 Bryn Mawr Avenue, Suite 200  
Rosemont, IL 60018



Cancellations will not be accepted over the phone. There is a \$150 processing fee for all Annual Assembly cancellations. All refund requests will be processed within 7–14 days after notification is received.

Workshop and intensive workshop tickets may not be exchanged or canceled after September 8, 2016. If you have purchased a ticket to a workshop and/or intensive workshop, a TICKET EXCHANGE board is available in the registration area for you to notify colleagues that you have a ticket to sell. The Academy also suggests that you utilize social media through the AAPM&R Facebook and Twitter handle #AAPMR2016, or PhyszForum.

Refund requests will not be accepted after September 8, 2016. If you have questions or need to make changes to your registration, contact Member Services at (847) 737-6000.

## Preconference Course Cancellation Policy

- **60 days prior to course start date (prior to August 22, 2016)**
  - › Cancellation Fee = Forfeiture of 50% of registration OR
  - › Transfer to another scheduled AAPM&R course\*
- **45 days prior to course start date (prior to September 6, 2016)**
  - › Cancellation Fee = Forfeiture of 75% of registration OR
  - › Transfer to another scheduled AAPM&R course\*
- **30 days prior to course start date (prior to September 21, 2016)**
  - › Forfeiture of full registration fee

\*Transfer extends to courses within a 12 calendar month. If no alternative course is available, the cancellation fee applies.

## Workshops and Intensive Workshops Cancellation Policy

Workshop and intensive workshop tickets may not be exchanged or canceled after September 8, 2016. You must be registered for Thursday only or the full Annual Assembly to attend an intensive workshop scheduled on Wednesday.



## Update Your Profile to Stay Visible in the PM&R Network

Ensure your practice and contact information in your member profile is current by updating your profile on [www.aapmr.org](http://www.aapmr.org). This is the best way to make sure you are visible in the Find a PM&R Physician tool and to confirm that you receive important communications regarding Academy and PM&R-specialty news.



## REGISTRATION FEES AND DEADLINES

MEMBER FEES			
Full Registration	Early-Bird Deadline August 24	Onsite	FEES
Full registration includes entry to all educational sessions, Job Fair, Welcome Reception, PM&R Pavilion, and a link to the course handouts. These fees exclude ticketed workshops and the President's Reception. Tickets must be purchased separately.			
<b>AAPM&amp;R</b>	<input type="radio"/> \$670	<input type="radio"/> \$770	\$
<b>ISPRM (non-U.S. Physiatrist)</b>	<input type="radio"/> \$670	<input type="radio"/> \$770	\$
<b>Senior Member/Past President</b>	<input type="radio"/> FREE	<input type="radio"/> FREE	\$
<b>Associate Fellow/Associate with Summer 2016 Graduation</b> In addition to the above, registration fee includes the Resident Town Hall.	<input type="radio"/> \$270	<input type="radio"/> \$305	\$
<b>Resident</b> In addition to the above, registration fee includes resident sessions on Wednesday and Thursday, Resident Town Hall, and Residents' Reception.	<input type="radio"/> \$270	<input type="radio"/> \$305	\$
<b>Medical Student</b> In addition to the above, registration fee includes Residents' Reception.	<input type="radio"/> \$125	<input type="radio"/> \$125	\$
<b>Single Day Registration</b> (workshops are additional) <input type="radio"/> Thursday <input type="radio"/> Friday <input type="radio"/> Saturday	<input type="radio"/> \$425	<input type="radio"/> \$475	\$
<b>Member Fees Total</b>			\$

NONMEMBER FEES			
Full Registration	Early-Bird Deadline August 24	Onsite	FEES
Full registration includes entry to all educational sessions, Job Fair, Welcome Reception, PM&R Pavilion, and a link to the course handouts. These fees exclude ticketed workshops and the President's Reception. Tickets must be purchased separately.			
<b>Physiatrist</b>	<input type="radio"/> \$980	<input type="radio"/> \$1,080	\$
<b>Resident</b> Includes resident sessions on Wednesday and Thursday, Resident Town Hall, Residents' Reception, Job Fair, Welcome Reception, and PM&R Pavilion. (Nonmembers must have their director or department head complete, on letterhead, a statement advising of their resident status. The statement must be included with this registration or will not be processed.)	<input type="radio"/> \$345	<input type="radio"/> \$380	\$
<b>Associate Fellow</b> Includes Resident Town Hall, Job Fair, Welcome Reception, and PM&R Pavilion.	<input type="radio"/> \$980	<input type="radio"/> \$1,080	\$
<b>Medical Student</b> Includes Residents' Reception. Nonmembers must provide a copy of their transcript with this registration.	<input type="radio"/> \$150	<input type="radio"/> \$150	\$
<b>Advanced Care Provider (ACP)</b> This includes: physical assistant, nurse practitioner, clinical nurse specialist, physical therapist, occupational therapist. (ACPs are NOT eligible to receive CME credit and cannot register for workshops.) Academy Member must be registered for the meeting and his/her name provided.	<input type="radio"/> \$670	<input type="radio"/> \$770	\$
Member Name: <input type="text"/>			
<b>Non-Physician Practice/Hospital Administrator</b> Registrants are NOT eligible to receive CME credit and cannot register for workshops.	<input type="radio"/> \$830	<input type="radio"/> \$930	\$
<b>Industry Representative</b> Are you an Industry Representative? <input type="radio"/> Yes <input type="radio"/> No Employed by or serve as a primary consultant for a "company"* as defined below? <input type="radio"/> Yes <input type="radio"/> No <small>*A "company" is a for-profit entity that develops, produces, markets, or distributes drugs, devices, services or therapies used to diagnose, treat, monitor, manage, and alleviate health conditions. (Definition taken from the Council for Medical Specialty Societies, Code for Interactions with Companies.)</small>	<input type="radio"/> \$980	<input type="radio"/> \$1,080	\$
<b>Single Day Registration</b> (workshops are additional) <input type="radio"/> Thursday <input type="radio"/> Friday <input type="radio"/> Saturday	<input type="radio"/> \$615	<input type="radio"/> \$690	\$
<b>Nonmember Fees Total</b>			\$

SPOUSE / GUEST / CHILD FEES		
<b>Spouse/Guest Registration</b> Includes entrance into the Welcome Reception, Job Fair, and PM&R Pavilion. Badges must be worn at all times.	<input type="radio"/> Age 21+ \$35	\$
<b>Child Registration</b> Includes entrance to the Welcome Reception. Badges must be worn at all times.	<input type="radio"/> Child under age 3: Complimentary <input type="radio"/> Child age 3-20: \$15	\$
<b>Spouse / Guest / Child Fees Total</b>		\$

### AAPM&R MEMBERS SAVE \$310 ON ANNUAL ASSEMBLY REGISTRATION!

Become an Academy member and experience the many savings and benefits of the AAPM&R community! Go to [www.aapmr.org](http://www.aapmr.org) to download a membership application today, or call (847) 737-6000 and a Customer Service Representative will be happy to assist you.

**PAGE 2 TOTAL**

\$



## REGISTRATION FEES & DEADLINES

EVENTS					
<b>President's Reception—World War II Museum</b> <i>*Badges must be worn and tickets must be presented to secure entrance into the Museum.</i>			<b>Friday, October 21 7 pm–10 pm</b>		
Registered Member/Resident*			<input type="radio"/> \$55		\$
Registered Nonmember/Resident*			<input type="radio"/> \$110		\$
Spouse/Guest* (age 21+)			<input type="radio"/> \$75		\$
Nonmember Spouse/Guest* (age 21+)			<input type="radio"/> \$140		\$
Child* (age 3–20):			<input type="radio"/> \$55		\$
<b>Foundation for PM&amp;R Rehab 5K Run/Walk &amp; Roll</b>		<b>Friday, October 21 6:30 am</b>			
Additional information will be sent to you prior to the event.		<b>Registration Fee</b>		<b>Resident Fee</b>	
		<b>Early-Bird Deadline August 24</b>	<b>Onsite</b>	<b>Early-Bird Deadline August 24</b>	<b>Onsite</b>
		<input type="radio"/> \$25	<input type="radio"/> \$35	<input type="radio"/> \$15	<input type="radio"/> \$25
<b>Learning Lab: Ultrasound</b> Ernest N. Morial Convention Center		<b>Thursday, October 20 9 am–2 pm</b>		<input type="radio"/> Complimentary	
<b>Interactive Arcade: REMS Playbook for Opioid Prescribing</b> Ernest N. Morial Convention Center		<b>Wednesday, October 19–Sunday, October 23</b>		<input type="radio"/> Complimentary	
<b>2016 Job Fair</b> Hilton New Orleans Riverside		<b>Wednesday, October 19 6:30 pm–9 pm</b>		<input type="radio"/> Complimentary	
<b>Wheelchair Basketball</b> PM&R Pavilion Limited spots available. Based on first-come, first-served basis.		<b>Thursday, October 20–Saturday, October 22</b>		<input type="radio"/> Complimentary	
<b>Cancer Rehabilitation Summit: Integration into Practice</b> Ernest N. Morial Convention Center		<b>Saturday, October 22 11 am–7 pm</b>		<input type="radio"/> Complimentary	

PRECONFERENCE COURSES						
<b>All preconference courses held Wednesday, October 19</b>		<b>Early-Bird Deadline August 24</b>		<b>Onsite</b>		
		<b>Member Rate</b>	<b>Nonmember Rate</b>	<b>Member Rate</b>	<b>Nonmember Rate</b>	
<b>Regenerative Medicine: Current Concepts and Brave New Paradigms in the Treatment of Musculoskeletal Conditions</b> Ernest N. Morial Convention Center				<input type="radio"/> \$650	<input type="radio"/> \$995	\$
<b>Clinical Applications of Ultrasound</b> Hilton New Orleans Riverside				<input type="radio"/> \$665	<input type="radio"/> \$985	\$
<b>Building and Maintaining Medicolegal Work in Your Physiatric Practice</b> Hilton New Orleans Riverside		<input type="radio"/> \$495	<input type="radio"/> \$695	<input type="radio"/> \$595	<input type="radio"/> \$795	\$
<b>Coding &amp; Reimbursement: Avoiding Audits and Denials</b> Hilton New Orleans Riverside						
Physicians		<input type="radio"/> \$435	<input type="radio"/> \$630	<input type="radio"/> \$485	<input type="radio"/> \$680	\$
Non-Physicians		N/A	<input type="radio"/> \$630	N/A	<input type="radio"/> \$680	\$
Associate Fellow/Residents/Medical Students		<input type="radio"/> \$155	<input type="radio"/> \$235	<input type="radio"/> \$205	<input type="radio"/> \$285	\$
Office Staff/Physician Extender		N/A	<input type="radio"/> \$405	N/A	<input type="radio"/> \$455	\$
<b>Afternoon Breakout</b> <i>Select your session: (Required)</i>		<b>Breakout Session A: Advanced Coding for the Interventionalist</b>		<input type="radio"/> 3:45 pm–5:45 pm		
		<b>Breakout Session B: Advanced Coding for the Post-Acute Care Setting</b>		<input type="radio"/> 3:45 pm–5:45 pm		
<b>Coding and Reimbursement Afternoon Breakout à la carte—select your session:</b>		<i>Flip to the next page for a PM&amp;R Coding Companion discount.</i>				
Breakout Session A: Advanced Coding for the Interventionalist		3:45 pm–5:45 pm		<input type="radio"/> \$150	\$	
Breakout Session B: Advanced Coding for the Post-Acute Care Setting		3:45 pm–5:45 pm		<input type="radio"/> \$150	\$	

90-MINUTE WORKSHOPS							
Registrants may preregister for up to 3 hands-on, 90-minute workshops. Rank your first 6 workshop choices in order of preference. Workshops will be assigned to you on a first-come, first-served basis. Find workshop descriptions, titles, and numbers online at <a href="http://www.aapmr.org/assembly">www.aapmr.org/assembly</a> .							# x Price = Total ▼
I am registering for: <input type="radio"/> 1 workshop <input type="radio"/> 2 workshops <input type="radio"/> 3 workshops		<b>Early-Bird Deadline August 24</b>		<b>Onsite</b>			
<b>Workshop Preference:</b>		<b>Member Rate \$65 per workshop</b>	<b>Nonmember Rate \$90 per workshop</b>	<b>Member Rate \$80 per workshop</b>	<b>Nonmember Rate \$130 per workshop</b>		\$
<b>1st Title #</b>	<b>2nd Title #</b>	<b>3rd Title #</b>	<b>4th Title #</b>	<b>5th Title #</b>	<b>6th Title #</b>		

TURN TO PAGE 4 FOR 180-MINUTE INTENSIVE WORKSHOPS.

PAGE 3 TOTAL \$

## REGISTRATION FEES & DEADLINES

### 180-MINUTE INTENSIVE WORKSHOPS

**Registrants must be registered for the Annual Assembly on the day of your intensive workshop.** Registration for the intensive workshop(s) is on a first-come, first-served basis and does not affect your ability to register for the 90-minute workshops described on page 3 of this form. You may register for any of the twelve 180-minute intensive workshops. Select the intensive workshops that are right for you, space is limited!

To attend the Wednesday workshops you must be registered for the full Annual Assembly or Thursday single day.			Early-Bird Deadline August 24		Onsite		
			Member Rate	Nonmember Rate	Member Rate	Nonmember Rate	
Wednesday, October 19	4 pm–7 pm	<b>IW801</b> Regenerative Medicine—Stem Cell Treatments in Osteoarthritis: Office-Based Application*	<input type="radio"/> \$150	<input type="radio"/> \$225	<input type="radio"/> \$165	<input type="radio"/> \$250	\$
		<b>IW802</b> Improving Assessment and Maximizing Intervention Options for Patients with Spasticity, Dystonia, and Related Motor Disorders*	<input type="radio"/> \$150	<input type="radio"/> \$225	<input type="radio"/> \$165	<input type="radio"/> \$250	\$
Thursday, October 20	11 am–2 pm	<b>IW803</b> Regenerative Medicine—Stem Cell Treatments in Osteoarthritis: Office-Based Application*	<input type="radio"/> \$150	<input type="radio"/> \$225	<input type="radio"/> \$165	<input type="radio"/> \$250	\$
		<b>IW804</b> ITB Pump Management Pearls for Patients with Spasticity, Dystonia, and Related Motor Disorders	<input type="radio"/> \$150	<input type="radio"/> \$225	<input type="radio"/> \$165	<input type="radio"/> \$250	\$
	3 pm–6 pm	<b>IW805</b> Diagnostic Ultrasound of the Wrist and Hand: Case-Based Review of Common Injuries and Overview of Commonly Performed Ultrasound-Guided Procedures	<input type="radio"/> \$150	<input type="radio"/> \$225	<input type="radio"/> \$165	<input type="radio"/> \$250	\$
		<b>IW806</b> Hip Ultrasound: Scanning Techniques with Case-Based Clinical Correlation	<input type="radio"/> \$150	<input type="radio"/> \$225	<input type="radio"/> \$165	<input type="radio"/> \$250	\$
Friday, October 21	11 am–2 pm	<b>IW807</b> Regenerative Medicine—Stem Cell Treatments in Osteoarthritis: Office-Based Application*	<input type="radio"/> \$150	<input type="radio"/> \$225	<input type="radio"/> \$165	<input type="radio"/> \$250	\$
		<b>IW808</b> Ultrasound Applications of Shoulder Diagnosis and Treatment	<input type="radio"/> \$150	<input type="radio"/> \$225	<input type="radio"/> \$165	<input type="radio"/> \$250	\$
	3 pm–6 pm	<b>IW809</b> Lumbar Spine, Abdomen, and Pelvic Pain Procedures with Ultrasound	<input type="radio"/> \$150	<input type="radio"/> \$225	<input type="radio"/> \$165	<input type="radio"/> \$250	\$
		<b>IW810</b> Improving Assessment and Maximizing Intervention Options for Patients with Spasticity, Dystonia, and Related Motor Disorders*	<input type="radio"/> \$150	<input type="radio"/> \$225	<input type="radio"/> \$165	<input type="radio"/> \$250	\$
Saturday, October 22	11 am–2 pm	<b>IW811</b> Regenerative Medicine—Stem Cell Treatments in Osteoarthritis: Office-Based Application*	<input type="radio"/> \$150	<input type="radio"/> \$225	<input type="radio"/> \$165	<input type="radio"/> \$250	\$
		<b>IW812</b> Improving Focal Chemodenervation Skills to Treat Patients with Spasticity, Dystonia, and Related Motor Disorders	<input type="radio"/> \$150	<input type="radio"/> \$225	<input type="radio"/> \$165	<input type="radio"/> \$250	\$

\*repeated sessions

**NOTE: Workshops are subject to cancellation 4 weeks prior to the start date with registration numbers under 10 people. Attendees will be contacted and given the option to transfer to another open workshop or receive a refund. See page 44 for complete details on our cancellation policies.**

**NOTE: Incomplete forms will delay the registration process.**

<b>Intensive Workshop Total</b>	\$
<b>Page 2 Total</b>	\$
<b>Page 3 Total</b>	\$

<b>GRAND TOTAL</b>	\$
--------------------	----

**Please do not block or spam email from [aapmr@prereg.net](mailto:aapmr@prereg.net). If you don't receive a confirmation via email after 2 weeks from submitting your form, check your junk/spam folder or call Customer Service at (847) 737-6000.**

**Method of Payment from page 1 must be completed and submitted with all pages of this Registration Form.**



Attendees of the **Coding & Reimbursement: Avoiding Audits and Denials** preconference course can purchase the 2016 PM&R Coding Companion for a discounted price of \$99.

Yes, I would like to purchase the PM&R Coding Companion.

195

DAYS

10

HOURS

30

MINUTES

15

SECONDS

Extensive Changes in Physician Payment Policies Start January 1, 2017.

# Are You MACRA Ready?

The countdown is on. No matter your clinical focus or practice setting, you will be positively or negatively impacted by the changes occurring in health care as a result of the Medicare Access and Chip Reauthorization Act (MACRA). Be informed; Be MACRA ready.

Make sure the following activities are part of your 2016 Annual Assembly

## October 20—T-minus 73 days

### PLENARY SESSION

Attend the opening plenary session to hear directly from AAPM&R President Gregory Worsowicz, MD, MBA, about the changes to health care, what they mean for psychiatry, and what the Academy is doing to support you.

## October 21—T-minus 72 days

### THE MACRA PRIMER

Two opportunities will be available to attend *The MACRA Primer*, an in-depth look at the legislation that results in a new framework for rewarding physicians for high performance starting January 1. This must-attend session will help you take ownership of your future in medicine by explaining 2 important payment tracks, the Merit-Based Incentive Payment System (MIPS) and Advanced Alternative Payment Models (APMs).

## October 22—T-minus 71 days

### MACRA GRAND ROUNDS

Time to dig deep with *MACRA Grand Rounds*—Saturday will be your opportunity to learn how you can successfully comply and what resources are available to you.

## Year Round—No need to wait!

Up-to-date information and resources are available at your fingertips year round at [www.aapmr.org](http://www.aapmr.org).



**aapm&r**

American Academy of  
Physical Medicine and Rehabilitation

9700 W. Bryn Mawr Ave., Suite 200  
Rosemont, Illinois 60018  
phone 877/AAPMR 99  
info@aapmr.org www.aapmr.org

NON-PROFIT  
ORGANIZATION  
U.S. POSTAGE  
**PAID**  
PERMIT NO 6585  
CHICAGO, IL 60601

**aapm&r**

**ANNUAL ASSEMBLY 2016**

OCTOBER 20-23, 2016 • NEW ORLEANS, LA

# MOVING PHYSIATRY FORWARD

OCTOBER 20-23, 2016 • NEW ORLEANS, LA

Register today at [www.aapmr.org/assembly](http://www.aapmr.org/assembly).



Like us on Facebook  
[www.facebook.com/aapmrinfo](http://www.facebook.com/aapmrinfo)



Follow us on Twitter  
[#AAPMR](https://twitter.com/AAPMR) ([#AAPMR2016](https://twitter.com/AAPMR))