

aaPM&R

ANNUAL ASSEMBLY 2017



JOB AND FELLOWSHIP FAIR SHOW GUIDE

October 11, 2017 | 6:30 pm–9 pm

**Colorado Convention Center
Exhibit Hall D, Exhibit Hall Level
Denver, CO**

Welcome to the AAPM&R Job and Fellowship Fair—the largest PM&R-specific career fair in the country.

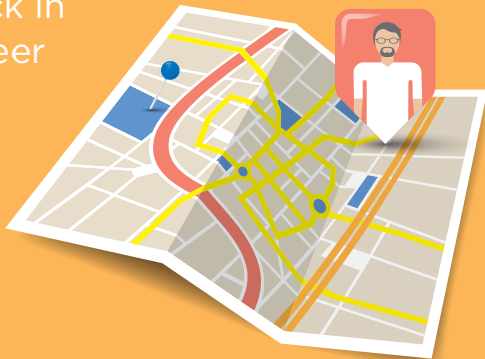
Looking for your dream job?

Or interested in what opportunities might be available?

Look no further than the AAPM&R Job and Fellowship Fair!

Meet representatives from more than 100 institutions and practices from around the country. This is your chance to make a lasting impression on a potential future employer.

Good luck in your career pursuits!



For the most up-to-date listings, view the Job and Fellowship Fair floor plan and list of employers at www.aapmr.org/jobfair or on the mobile app at www.aapmr.org/app.

Take Advantage of the AAPM&R Job and Fellowship Board

Simplify your job search with AAPM&R's Job and Fellowship Board—**jobboard.aapmr.org**—the premier electronic recruitment and job search resource exclusively for physiatrists in all stages of their careers.

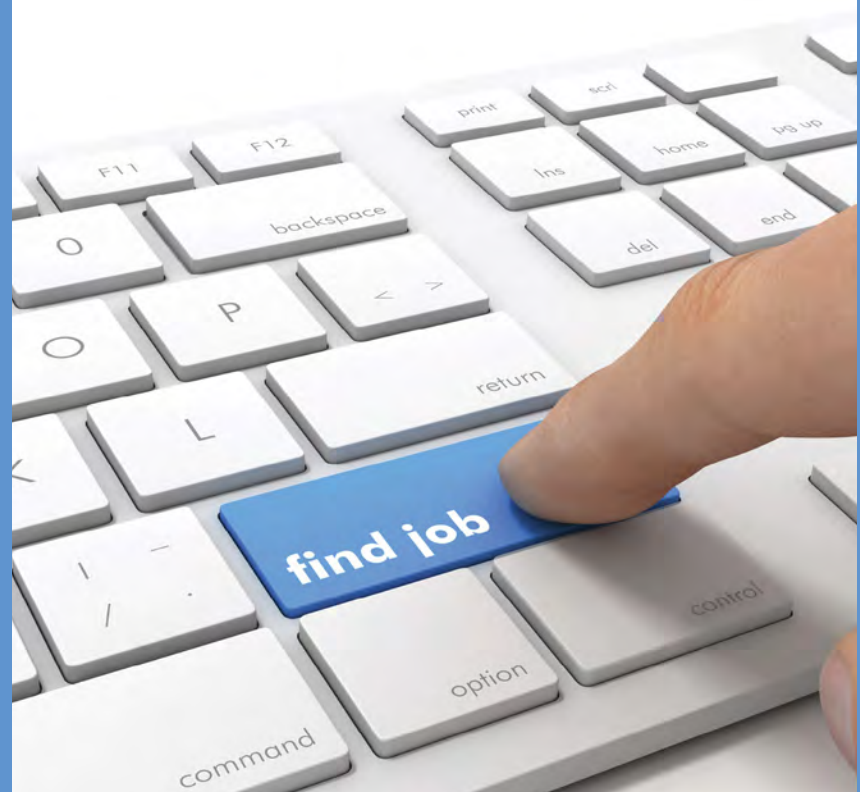
Looking for a new job?

Sign in, post your CV, and view positions across the U.S.

Looking to hire a physiatrist?

Post your open position, browse the resume database, and search for your ideal candidate(s).

Your Academy is a proud member of the National Healthcare Career Network (NHCN)—an alliance of more than 300 professional associations and societies serving job seekers looking for careers in the health care industry.





*Four simple words
guide the actions
of our employees.
Improving Health,
Enriching Life*

altru.org/careers/physicians

**Jennifer Semling,
Manager,
Physician Recruitment**
800.437.5373, ext. 6607
701.741.0330 cell
jsemling@altru.org

What is it about Altru?

Altru Health System is a non-profit integrated health system located in northeast North Dakota and northwest Minnesota. Altru is a 277-bed, Level II Trauma Center with more than 200 physicians representing 44 specialties and serving a primary care population of over 220,000.

Physiatrist

Altru Health System is located in Grand Forks, North Dakota and is seeking a Physiatrist to join our team.

- » Well established and supported practice with 2 other PM&R physicians
- » New, state of the art 23 bed specialty hospital
- » Call of 1:3 with additional support from our team of hospitalists

(Advertisement)

Baylor
College of
Medicine

PHYSICAL MEDICINE
& REHABILITATION

SPECIALIZED REHABILITATION CARE



Learn more at bcm.edu/rehabilitation

Physical Medicine and Rehabilitation specialists offer a full range of rehabilitation services for


- Traumatic brain injury
- Stroke
- Amputation
- Musculoskeletal disorders
- Neurosurgical trauma
- Orthopedic trauma
- Sports injuries



(Advertisement)


COMPANY	REGION	BOOTH
Adventist Healthcare Rehab Gaithersburg, MD	EAST	P9
AREAS OF CARE: Musculoskeletal Medicine, Sports Medicine		
PRACTICE SETTINGS: System Affiliated Multi-Specialty Group, Hospital Rehab Unit or Floor, Outpatient Clinic		
Akron Children's Hospital Akron, OH	MIDWEST	2114
AREA OF CARE: Pediatric Rehabilitation		
PRACTICE SETTINGS: System Affiliated Multi-Specialty Group, Hospital Rehab Unit or Floor, Outpatient Clinic		
Altru Health System Grand Forks, ND	MIDWEST	2620
AREAS OF CARE: General Rehabilitation, Medical Rehabilitation, Occupational Rehabilitation		
PRACTICE SETTINGS: System Affiliated Multi-Specialty Group, Hospital Rehab Unit or Floor		
Avera Medical Group Sioux Falls, SD	MIDWEST	2203
PRACTICE SETTINGS: Hospital Rehab Unit or Floor, Outpatient Clinic		
Baylor College of Medicine Houston, TX	SOUTH	2607
AREAS OF CARE: General Rehabilitation, Spine Medicine, Sports Medicine, Brain Injury, Spinal Cord Injury, Pain Medicine		
PRACTICE SETTING: System Affiliated PM&R Group		
Baylor Institute for Rehabilitation Dallas, TX	SOUTH	2404
AREAS OF CARE: Academic GME, Academic Research, General Rehabilitation, Medical Rehabilitation, Cancer, Cardiopulmonary, Geriatric, Musculoskeletal Medicine, Spine Medicine, Sports Medicine, Neurological Rehabilitation, Stroke, Brain Injury, Spinal Cord Injury, Neuromuscular Medicine, Occupational Rehabilitation		
PRACTICE SETTINGS: System Affiliated PM&R Group, Freestanding IRF, Hospital Rehab Unit or Floor		
Billings Clinic Billings, MT	WEST	2510
AREAS OF CARE: General Rehabilitation, Spine Medicine		
PRACTICE SETTING: Independent Multi-Specialty Group		
Borgess/Ascension Kalamazoo, MI	MIDWEST	2329
AREAS OF CARE: Academic GME, Academic Research, General Rehabilitation, Medical Rehabilitation, Cancer, Cardiopulmonary, Geriatric, Limb Deficiency, Musculoskeletal Medicine, Spine Medicine, Sports Medicine, Neurological Rehabilitation, Stroke, Brain Injury, Spinal Cord Injury, Neuromuscular Medicine, Occupational Rehabilitation, Pain Medicine		
PRACTICE SETTINGS: System Affiliated Multi-Specialty Group, Hospital Rehab Unit or Floor, Outpatient Clinic		

Physician-Led Medicine in Montana
Physical Medicine & Rehabilitation




Billings Clinic

Seeking a BE/BC physiatrist to join our busy, collegial team. Provide excellent care while practicing progressive medicine in the region's tertiary referral center.


- Interventional/Conservative Spine
- MSC
- Integrated, multi-specialty organization
- "America's Best Town of 2016" 

Contact: Rochelle Woods
 1-888-554-5922
physicianrecruiter@billingsclinic.org
billingsclinic.com



Billings Clinic is nationally recognized for clinical excellence and is a proud member of the **Mayo Clinic Care Network**. Located in Billings, Montana – this friendly college community is a great place to raise a family near the majestic Rocky Mountains. Exciting outdoor recreation close to home. 300 days of sunshine!

#1 Hospital in Montana



(Advertisement)



Community Health Network

Visit us at Booth # 2612

**Physical Medicine and Rehabilitation Job Opportunities
Indianapolis, IN**

- Evaluate and treat non-surgical spine conditions
- Potential for leadership responsibilities
- Work as part of the neurosurgical team OR practice with a team of physiatrists in a Spine Center setting
- On-Site spine rehabilitation and physical therapy with onsite imaging services
- Strong primary care referral base, within a physician-led organization

Physician led and governed group
 Competitive compensation and benefits package, above average earning potential
 Comprised of more than 600 physicians

Send your CV prior to the conference to set up an interview/meeting with the Medical Director during AAPM&R. CGallagher2@eCommunity.com, 317-621-7502
Caitlin Gallagher, Senior Network Physician Recruiter

(Advertisement)

COMPANY	REGION	BOOTH
Carilion Clinic Roanoke, VA	EAST	2121
AREAS OF CARE: General Rehabilitation, Musculoskeletal Medicine, Spine Medicine, Sports Medicine, Stroke, Brain Injury, Spinal Cord Injury, Neuromuscular Medicine		
PRACTICE SETTINGS: System Affiliated Multi-Specialty Group, Hospital Rehab Unit or Floor		
Carolinas Rehabilitation at Carolinas Healthcare System Charlotte, NC	SOUTH	2310
AREAS OF CARE: Academic GME, Academic Research, General Rehabilitation, Cancer, Musculoskeletal Medicine, Sports Medicine, Neurological Rehabilitation, Stroke, Brain Injury, Spinal Cord Injury, Pediatric Rehabilitation		
PRACTICE SETTING: System Affiliated Multi-Specialty Group		
Children's Hospital of Michigan Southfield, MI	MIDWEST	2313
AREAS OF CARE: Brain Injury, Spinal Cord Injury, Pediatric Rehabilitation		
PRACTICE SETTING: Hospital Rehab Unit or Floor		
Children's Hospital of Philadelphia – Division of Rehabilitation Medicine Philadelphia, PA	EAST	2107
AREA OF CARE: Pediatric Rehabilitation		
PRACTICE SETTINGS: Hospital Rehab Unit or Floor, Outpatient Clinic		
Children's National Health System Washington, DC	EAST	2606
AREAS OF CARE: Academic GME, Pediatric Rehabilitation		
PRACTICE SETTINGS: System Affiliated Multi-Specialty Group, Hospital Rehab Unit or Floor		
Cincinnati Children's Hospital Medical Center Cincinnati, OH	MIDWEST	2512
AREA OF CARE: Pediatric Rehabilitation		
PRACTICE SETTINGS: Hospital Rehab Unit or Floor, Outpatient Clinic		
Colorado Clinic Loveland, CO	WEST	2529
AREA OF CARE: Pain Medicine		
PRACTICE SETTINGS: Independent PM&R Group, Private Practice		
Community Health Network Indianapolis, IN	MIDWEST	2612
AREAS OF CARE: General Rehabilitation, Musculoskeletal Medicine, Spine Medicine		
PRACTICE SETTING: Outpatient Clinic		

Institutions selected their own areas of care and practice settings to show attendees the range of care they provide.

2019 Interventional Pain Management Fellowship

Program Director:

Bharat Patel, MD, DABIPP, DABPMR



Procedures taught:

- Epidural Steroid Injections
- Medial Branch Blocks/Rhizotomy
- Discograms
- Spinal Cord Stimulator Placement
- PRP/Stem cell based therapy
- Kyphoplasty
- Piriformis injection
- Sacroiliac joint injections
- Botox injections

Deuk Spine Institute's team of physicians and surgeons are committed to providing the highest quality care for back and neck pain. Our clinic specializes in the advanced treatment of pain and discomfort due to degenerative spine conditions. Our procedures are performed at the Surgery Center of Viera, a state-of-the-art Ambulatory Surgical Center..



Dr. Patel is Board Certified in physical medicine and rehab, electrodiagnostic medicine, pain medicine, interventional pain management & sports medicine.

To learn more, visit us at Booth #2314 or contact us at
fellowships@deukspine.com

deukspine.com surgerycenterofviera.com

(Advertisement)

MEDICAL DIRECTOR - SPINAL CORD INJURY PROGRAM

#yeahTHATgreenville, SC

Greenville Health System (GHS), the largest healthcare provider in South Carolina, seeks a Medical Director for our Spinal Cord Injury Program at Roger C. Peace Rehabilitation Hospital. The physician will join 4 Physiatrists and a supportive staff who provide inpatient and outpatient services. Recognized as the state leader in rehabilitation, our Spinal Cord Injury Program is CARF-accredited and our facilities include a U.S. Paralympic Sport Club and training site. Roger C. Peace is proud research partners with Clemson University and The University of South Carolina School of Medicine-Greenville.

The ideal candidate is a Physical Medicine and Rehabilitation physician with fellowship training in Spinal Cord Injury, an interest in providing inpatient and outpatient services to the SCI population as well as an interest in research and teaching. Spasticity management skills, including Baclofen Pumps, are preferred.

Stop by and see us at Booth 2406!

Qualified applicants should send a letter of interest and current CV to Hannah Sandberg, In-house Physician Recruiter, at: hsandberg@ghs.org or call 864-797-6164.

We are a Public Service Loan Forgiveness (PSLF) Program Qualified Employer! EOE



GREENVILLE HEALTH SYSTEM

(Advertisement)

COMPANY	REGION	BOOTH
CompHealth	NATIONAL	2306
AREAS OF CARE: Academic GME, Academic Research, General Rehabilitation, Medical Rehabilitation, Cancer, Cardiopulmonary, Geriatric, Hospice Palliative Care, Limb Deficiency, Musculoskeletal Medicine, Spine Medicine, Sports Medicine, Neurological Rehabilitation, Stroke, Brain Injury, Spinal Cord Injury, Neuromuscular Medicine, Occupational Rehabilitation, Pain Medicine, Pediatric Rehabilitation		
PRACTICE SETTINGS: System Affiliated Solo Private Practice, Independent Solo Private Practice, System Affiliated PM&R Group, Private Practice, System Affiliated Multi-Specialty Group, Independent Multi-Specialty Group, Freestanding IRF, Hospital Rehab Unit or Floor, Skilled Nursing Facility (SNF), Long-Term Acute Care (LTACH), Sub-Acute Care Facility, Outpatient Clinic, Home Health, Non-Clinical, VA, Active Military Duty		
Courage Kenny Rehabilitation Institute – Allina Health Minneapolis, MN	MIDWEST	2410
AREAS OF CARE: General Rehabilitation, Medical Rehabilitation, Musculoskeletal Medicine, Brain Injury, Spinal Cord Injury		
PRACTICE SETTING: System Affiliated Multi-Specialty Group		
Desert Spine and Sports Physicians	NATIONAL	2320
AREAS OF CARE: Spine Medicine, Sports Medicine		
PRACTICE SETTINGS: Independent PM&R Group, Private Practice		
Deuk Spine Institute Melbourne, FL	SOUTH	2314
AREAS OF CARE: Musculoskeletal Medicine, Spine Medicine, Sports Medicine, Pain Medicine		
PRACTICE SETTINGS: System Affiliated Multi-Specialty Group, Independent Multi-Specialty Group		
Eastern Maine Medical Center Brewer, ME	EAST	2712
AREAS OF CARE: General Rehabilitation, Medical Rehabilitation, Musculoskeletal Medicine, Stroke, Neurological Medicine, Stroke, Brain Injury, Spinal Cord Injury		
PRACTICE SETTINGS: System Affiliated Multi-Specialty Group, Hospital Rehab Unit or Floor		
Edward-Elmhurst Health Naperville, IL	MIDWEST	2324
AREAS OF CARE: Medical Rehabilitation, Musculoskeletal Medicine, Spine Medicine, Neuromuscular Medicine, Pain Medicine		
PRACTICE SETTING: System Affiliated Multi-Specialty Group		
East Carolina University – Brody School of Medicine Greenville, NC	SOUTH	2702
AREAS OF CARE: Academic GME, General Rehabilitation, Musculoskeletal Medicine, Neurological Rehabilitation, Stroke, Brain Injury, Spinal Cord Injury, Neuromuscular Medicine, Occupational Rehabilitation, Pain Medicine, Pediatric Rehabilitation		
PRACTICE SETTINGS: Hospital Rehab Unit or Floor, Outpatient Clinic		



Enriching every life, including yours

Gundersen Health System, La Crosse, Wisconsin, is seeking a **Physical Medicine and Rehabilitation physician**. This opportunity includes both inpatient and outpatient PM&R.

Practice highlights:

- Join six Physiatrists, six Associate Staff, and three Chiropractors in the Department of Physical Medicine and Rehabilitation
- Inpatient Rehab Unit is currently being remodeled, and will include 20 beds
- Highly collaborative staff including PT, OT, SLP, Neuropsychology, Social Workers, and RN case managers
- Competitive salary, loan forgiveness, relocation, and outstanding benefits
- Unique partnership with the UW Medical School means you enjoy the best of practicing in an academic medical center--teaching and research--in addition to patient care

Contact me for more information:

Cathy Mooney, Medical Staff Recruitment
(608) 775-3637 or camooney@gundersenhealth.org
GundersenHealth.org/medcareers



GUNDERSEN
HEALTH SYSTEM®
Where Caring Meets Excellence

Gundersen Lutheran Medical Center, Inc. | Gundersen Clinic, Ltd. | 24395_0817

(Advertisement)



Join a Leading Children's Hospital in South Florida



PEDIATRIC PHYSIATRY CAREER OPPORTUNITY

The Division of Pediatric and Adolescent Rehabilitation at Joe DiMaggio Children's Hospital is seeking a BE/BC pediatric physiatrist with excellent clinical and personal skills to join our team of dedicated professionals.

About Joe DiMaggio Children's Hospital

Joe DiMaggio Children's Hospital opened in 1992 and has grown to be the leading children's hospital in Broward and Palm Beach counties with 226 beds, an 84-bed Level II and III NICU, 30-bed PICU and 12-bed intermediate care unit. Located in the heart of South Florida, a high quality of life – including year-round summer weather, exciting multiculturalism and **no state income tax** – attracts new residents from all over the country and around the world.

To see the full job description or to submit your CV for consideration, please visit memorialphysician.com. Additional information about Joe DiMaggio Children's Hospital can be found at jdch.com.

visit memorialphysician.com

(Advertisement)

COMPANY	REGION	BOOTH
Faith Regional Health Services Norfolk, NE	MIDWEST	2222
AREAS OF CARE: General Rehabilitation, Medical Rehabilitation, Cancer, Cardiopulmonary, Geriatric, Hospice Palliative Care, Musculoskeletal Medicine, Sports Medicine, Stroke, Neuromuscular Medicine, Occupational Rehabilitation, Pain Medicine		
PRACTICE SETTINGS: System Affiliated Multi-Specialty Group, Hospital Rehab Unit or Floor, Skilled Nursing Facility (SNF), Outpatient Clinic, Home Health		
Farr Healthcare	NATIONAL	2204
AREAS OF CARE: Academic GME, Academic Research, General Rehabilitation, Medical Rehabilitation, Cancer, Cardiopulmonary, Geriatric, Hospice Palliative Care, Limb Deficiency, Musculoskeletal Medicine, Spine Medicine, Sports Medicine, Neurological Rehabilitation, Stroke, Brain Injury, Spinal Cord Injury, Neuromuscular Medicine, Occupational Rehabilitation, Pain Medicine, Pediatric Rehabilitation		
PRACTICE SETTINGS: System Affiliated Solo Private Practice, Independent Solo Private Practice, System Affiliated PM&R Group, Private Practice, Independent PM&R Group, Private Practice, System Affiliated Multi-Specialty Group, Independent Multi-Specialty Group, Freestanding IRF, Hospital Rehab Unit or Floor, Skilled Nursing Facility (SNF), Long-Term Acute Care (LTACH), Sub-Acute Care Facility, Outpatient Clinic		
Gaylord Specialty Healthcare Wallingford, CT	EAST	2125
AREAS OF CARE: Medical Rehabilitation, Stroke, Brain Injury, Spinal Cord Injury		
PRACTICE SETTING: Long-Term Acute Care (LTACH)		
Geisinger Health System Danville, PA	EAST	2528
AREAS OF CARE: Academic GME, Academic Research, General Rehabilitation, Medical Rehabilitation, Geriatric, Limb Deficiency, Spine Medicine, Neurological Rehabilitation, Brain Injury, Spinal Cord Injury, Neuromuscular Medicine, Occupational Medicine, Pediatric Medicine		
PRACTICE SETTINGS: System Affiliated PM&R Group, Private Practice, Hospital Rehab Unit or Floor		
Good Shepherd Rehabilitation Network Allentown, PA	EAST	2211
AREAS OF CARE: General Rehabilitation, Geriatric, Musculoskeletal Medicine, Spine Medicine, Neurological Rehabilitation, Stroke, Brain Injury, Spinal Cord Injury, Neuromuscular Medicine, Pediatric Rehabilitation		
PRACTICE SETTINGS: Hospital Rehab Unit or Floor, Long-Term Acute Care (LTACH), Outpatient Clinic		
Greenville Health System Greenville, SC	SOUTH	2406
AREA OF CARE: Spinal Cord Injury		
PRACTICE SETTING: Hospital Rehab Unit or Floor		
Gundersen Health System LaCrosse, WI	MIDWEST	2603
AREAS OF CARE: General Rehabilitation, Musculoskeletal Medicine, Neurological Rehabilitation, Stroke, Brain Injury, Spinal Cord Injury		
PRACTICE SETTING: System Affiliated Multi-Specialty Group		



PM&R Physician Opportunities in Minnesota

HealthEast Care System is the largest health care provider in the Twin Cities' East Metro. With 14 clinics and four hospitals — Bethesda Hospital, St. John's Hospital, St. Joseph's Hospital, and Woodwinds Health Campus — we provide excellent family health and specialization, including primary, maternity, home care and post-acute care.

Current openings:

Outpatient, Spine Center—Maplewood, MN:

Full time, outpatient practice including PM&R physicians, interventional pain medicine specialists and spine surgeons

Inpatient—St. Paul, MN:

Working out of St. Joseph's Hospital and Bethesda Hospital, in a LTAC setting assisting transition of care for ICU and Neuro patients

We offer a competitive compensation and benefits package including: Relocation, Quality Incentive program, and Sign-on bonus

For more information contact **Marquita at** mrwagner@healtheast.org or call 651-232-6116

COMPANY	REGION	BOOTH
HCA Midwest Health Kansas City, MO	MIDWEST	2710
AREAS OF CARE: General Rehabilitation, Neurological Rehabilitation, Pain Medicine		
PRACTICE SETTINGS: System Affiliated PM&R Group, Private Practice		
HealthEast St. Paul, MN	MIDWEST	2505
AREA OF CARE: Spine Medicine		
PRACTICE SETTINGS: System Affiliated Multi-Specialty Group, Outpatient Clinic		
HealthSouth Corporation	NATIONAL	2300
AREAS OF CARE: General Rehabilitation, Limb Deficiency, Stroke, Brain Injury, Spinal Care Injury		
PRACTICE SETTING: Other		
Hennepin County Medical Center Minneapolis, MN	MIDWEST	2611
AREAS OF CARE: Academic GME, General Rehabilitation, Musculoskeletal Medicine, Spine Medicine, Neurological Rehabilitation, Stroke, Brain Injury, Spinal Cord Injury, Neuromuscular Medicine, Occupational Rehabilitation		
PRACTICE SETTINGS: System Affiliated Multi Specialty Group, Hospital Rehab Unit or Floor, Outpatient Clinic		
Hospital for Special Surgery New York, NY	EAST	2506
AREAS OF CARE: Musculoskeletal Medicine, Spine Medicine, Sports Medicine, Pain Medicine		
PRACTICE SETTING: Outpatient Clinic		
Indiana University Health Physicians Indianapolis, IN	MIDWEST	2525
AREAS OF CARE: Musculoskeletal Medicine, Spine Medicine, Sports Medicine, Neurological Rehabilitation, Stroke, Brain Injury, Spinal Cord Injury, Pain Medicine		
PRACTICE SETTINGS: System Affiliated Multi-Specialty Group, Hospital Rehab Unit or Floor, Sub-Acute Care Facility, Outpatient Clinic		
Integrated Rehab Consultants	NATIONAL	P2
AREAS OF CARE: General Rehabilitation, Geriatric		
PRACTICE SETTINGS: Independent PM&R Group, Private Practice, Skilled Nursing Facility (SNF), Sub-Acute Care Facility		
Intermountain Healthcare Murray, UT	WEST	2112
AREAS OF CARE: General Rehabilitation, Medical Rehabilitation, Neurological Rehabilitation		
PRACTICE SETTINGS: System Affiliated Multi-Specialty Group, Hospital Rehab Unit or Floor		
ISS Rehab Irvine, CA	WEST	2405
AREA OF CARE: General Rehabilitation		
PRACTICE SETTING: Skilled Nursing Facility (SNF)		

Job Opportunities

Physical Medicine and Rehabilitation or Medical Pain Management Physicians

Louisville, Kentucky

Norton Pain Management Associates, a part of Norton Medical Group, is recruiting additional physicians. The preferred candidates are fellowship-trained in physical medicine and rehabilitation and/or medical pain management. Norton Medical Group, the physician practice division of Norton Healthcare, provides a referral base of more than 850 medical providers, including comprehensive care of primary care, neurosurgery, spine surgery, women's health and orthopedic surgery providers.

The physicians with Norton Pain Management Associates



From left: **Raghunath Gudibanda, M.D.**, pain management, **Daniel Kean, M.D.**, physical medicine and rehabilitation, **Anil Vinayakan, M.D.**, pain management

Submit your CV at BeANortonDoctor.com. To discuss this opportunity at the American Academy of Physical Medicine and Rehabilitation Annual Assembly 2017, contact Rupinder Kaur, senior recruiter, Norton Medical Group, at (502) 322-7703 or rupinder.kaur@nortonhealthcare.org.

Norton Healthcare is an Equal Opportunity Employer M/F/Disability/Veteran/Sexual Orientation/Gender Identity



COMPANY	REGION	BOOTH
JFK/Johnson Rehabilitation Institute, Rutger Robert Wood Johnson Medical School Edison, NJ	EAST	2212
AREAS OF CARE: Spinal Cord Injury, Pain Medicine		
PRACTICE SETTING: Other		
* Johns Hopkins Rehabilitation Network Baltimore, MD	EAST	2221
AREAS OF CARE: Academic Research, General Rehabilitation, Medical Rehabilitation, Cancer, Geriatric, Limb Deficiency, Musculoskeletal Medicine, Spine Medicine, Sports Medicine, Neurological Rehabilitation, Stroke, Brain Injury, Spinal Cord Injury, Neuromuscular Medicine, Occupational Rehabilitation, Pain Medicine, Pediatric Rehabilitation		
Kaiser Permanente – Northern California Oakland, CA	WEST	P6
AREAS OF CARE: General Rehabilitation, Medical Rehabilitation, Cancer, Cardiopulmonary, Geriatric, Hospice Palliative Care, Sports Medicine, Occupational Rehabilitation, Pediatric Rehabilitation		
PRACTICE SETTING: Outpatient Clinic		
Kaiser Permanente – Southern California Pasadena, CA	WEST	2411
Kessler Institute for Rehabilitation West Orange, NJ	EAST	2504
AREAS OF CARE: General Rehabilitation, Medical Rehabilitation, Cancer, Limb Deficiency, Musculoskeletal Medicine, Neurological Rehabilitation, Stroke, Brain Injury, Spinal Cord Injury, Neuromuscular Medicine, Occupation Rehabilitation, Pain Medicine		
PRACTICE SETTING: Freestanding IRF		
* Kindred Healthcare Louisville, KY	NATIONAL	P4
AREAS OF CARE: Medical Rehabilitation, Neurological Rehabilitation		
PRACTICE SETTING: Hospital Rehab Unit or Floor		
Legacy Physiatry Group, LLC	NATIONAL	P5
AREAS OF CARE: General Rehabilitation, Geriatric, Musculoskeletal Medicine		
PRACTICE SETTINGS: Skilled Nursing Facility (SNF), Long-Term Acute Care (LTACH)		
Marianjoy Rehabilitation Hospital Wheaton, IL	MIDWEST	2206
AREAS OF CARE: General Rehabilitation, Medical Rehabilitation, Musculoskeletal Medicine, Sports Medicine, Neurological Rehabilitation, Stroke, Brain Injury, Spinal Cord Injury, Neuromuscular Medicine, Occupational Rehabilitation, Pain Medicine, Pediatric Rehabilitation		
PRACTICE SETTING: Freestanding IRF		
Marshfield Clinic Marshfield, WI	MIDWEST	2229

*Denotes a participant in the 2017 Institution Partners Council (IPC).



Musculoskeletal/Pain Medicine – Cleveland, Ohio

The Department of Physical Medicine and Rehabilitation (PM&R) of Case Western Reserve University (CWRU) School of Medicine and the MetroHealth System (MHS) is recruiting for a full-time Musculoskeletal/Pain Medicine academic physiatrist, with primary clinical focus on outpatient management of musculoskeletal conditions and chronic pain. Depending on training and practice preference, other duties may include interventional pain procedures, ultrasound guided procedures, electrodiagnostic medicine, and sports medicine. Qualified candidates will be BC/BE in PM&R. BC/BE in Pain Medicine is desirable. Qualified candidates will have demonstrated clinical skills, team leadership ability, and interest in teaching. The position has significant resident and medical student teaching responsibilities. Research time and funding are available for clinical research activities for qualified candidates. Academic appointment will be commensurate with experience.

The MHS includes a 450-bed mission-driven academic medical center, and is a Level I Trauma Center, a certified Comprehensive Stroke Center, and a federally designated Spinal Cord Injury Model System. The MetroHealth Rehabilitation Institute of Ohio (MRIO) is a free-standing rehabilitation hospital featuring CARF-accredited PM&R inpatient and outpatient services. Our 67 acute inpatient rehabilitation beds are divided into distinct units for brain injury, stroke and spinal cord injury, with extensive outpatient facilities on the main campus and multiple community-based satellites. The Department includes 29 clinical & research faculty, a 21 resident PM&R training program, Spinal Cord Injury Medicine and Brain Injury Medicine Fellowships and more than 300 clinical and support staff. The MRIO has over \$30 million in research funding and is internationally renowned for its clinical research of electrical stimulation for the treatment of CNS paralysis and chronic musculoskeletal pain. The department of PM&R ranks #5 in NIH funding among U.S. medical school PM&R departments. Cleveland is rated as one of the most livable cities in the nation. Further information is available at: <http://www.metrohealth.org/rehab>, <http://casemed.case.edu> and www.cleveland.com.

Please submit a letter of interest, CV and contact information for three references to:

John Chae, MD - Professor and Chair, Department of Physical Medicine & Rehabilitation
Case Western Reserve University School of Medicine/MetroHealth Rehabilitation Institute of Ohio
4229 Pearl Road, Cleveland, OH 44109-1998
Email: jchae@metrohealth.org

In employment, as in education, CWRU School of Medicine and the MHS are committed to Equal Opportunity and Affirmative Action. Women and minorities are encouraged to apply.

(Advertisement)

Ochsner BC/BE PHYSIATRISTS

Health System

OCHSNER HEALTH SYSTEM in NEW ORLEANS is seeking BC/BE PHYSIATRISTS and a PEDIATRIC PHYSIATRIST to join its expanding practices. Opportunities exist for inpatient rehabilitation or a combined inpatient and outpatient practice. Candidates with experience or directly from training are welcomed to apply.

- Work in a collegial environment with other adult and pediatric subspecialists
- New 5-story, 45-bed Continuum Care Hospital opening 1st Quarter of 2018. Floors dedicated to SNF, LTAC, Skilled Nursing, Inpatient, as well as a Brain Injury unit. 10-bed Continuum Care Pediatric Rehab; only one of its kind in region
- Inpatient rehabilitation facility certified by CARF in general rehabilitation and CARF certification in stroke recovery
- Participation in Ochsner's well-developed concussion management program and other multidisciplinary programs
- Education and training of residents and medical students

Ochsner Health System is Louisiana's largest non-profit, multi-specialty, healthcare delivery system with 29 owned, managed and affiliated hospitals and 80+ health and urgent care centers. Ochsner employs more than 1,100 physicians in over 90 medical specialties and subspecialties and performs over 600 clinical research studies. Ochsner is the only Louisiana hospital recognized by *U.S. News & World Report* as a "Best Hospital" across four specialty categories caring for patients from all 50 states and more than 80 countries worldwide. Please visit www.ochsner.org.



Please email CV to: profrecruiting@ochsner.org
Reference # TSGP17
Sorry, no opportunities for J-1 applications.

Ochsner is an equal opportunity employer and all qualified applicants will receive consideration for employment without regard to race, color, religion, sex, national origin, sexual orientation, disability status, protected veteran status, or any other characteristic protected by law.

(Advertisement)

COMPANY	REGION	BOOTH
Mary Free Bed Rehabilitation Hospital Grand Rapids, MI	MIDWEST	2602
AREAS OF CARE: General Rehabilitation, Medical Rehabilitation, Cancer, Cardiopulmonary, Musculoskeletal Medicine, Neurological Rehabilitation, Stroke, Brain Injury, Spinal Cord Injury, Neuromuscular Medicine, Pain Medicine, Pediatric Rehabilitation		
PRACTICE SETTING: Outpatient Clinic		
Mayo Clinic	NATIONAL	2104
Medical College of Wisconsin Milwaukee, WI	MIDWEST	2413
AREAS OF CARE: General Rehabilitation, Spine Medicine, Sports Medicine, Neurological Rehabilitation, Stroke, Brain Injury, Spinal Cord Injury, Neuromuscular Medicine, Occupational Rehabilitation, Pain Medicine, Pediatric Rehabilitation		
PRACTICE SETTING: System Affiliated Multi-Specialty Group		
* Medstar National Rehabilitation Network Washington, DC	EAST	2507
AREAS OF CARE: Academic GME, Academic Research, General Rehabilitation, Medical Rehabilitation, Cancer, Cardiopulmonary, Limb Deficiency, Musculoskeletal Medicine, Spine Medicine, Sports Medicine, Neurological Rehabilitation, Stroke, Brain Injury, Spinal Cord Injury, Neuromuscular Medicine, Occupational Rehabilitation, Pain Medicine, Pediatric Rehabilitation		
PRACTICE SETTINGS: System Affiliated Multi-Specialty Group, Hospital Rehab Unit or Floor, Outpatient Clinic		
Memorial Rehabilitation Institute Hollywood, FL	SOUTH	2304
AREA OF CARE: Academic GME		
PRACTICE SETTINGS: System Affiliated PM&R Group-Private Practice, System Affiliated Multi-Specialty Group, Hospital Rehab Unit or Floor, Outpatient Clinic, Home Health		
Metro Health Rehab Institute Cleveland, OH	MIDWEST	2210
Miner/Mason & Associates Los Angeles, CA	WEST	P1
Montefiore Medical Center- PM&R Faculty Practice Bronx, NY	EAST	2322
AREAS OF CARE: General Rehabilitation, Medical Rehabilitation, Cancer, Geriatric, Musculoskeletal Medicine, Spine Medicine, Sports Medicine, Neurological Rehabilitation, Stroke, Brain Injury, Spinal Cord Injury, Neuromuscular Medicine, Pediatric Rehabilitation		
PRACTICE SETTINGS: System Affiliated Multi-Specialty Group, Outpatient Clinic		
MossRehab Elkins Park, PA	EAST	2428
AREAS OF CARE: Academic GME, Academic Research, General Rehabilitation, Medical Rehabilitation, Limb Deficiency, Musculoskeletal Medicine, Spine Medicine, Sports Medicine, Stroke, Brain Injury, Spinal Cord Injury, Neuromuscular Medicine, Occupational Rehabilitation, Pain Medicine		
PRACTICE SETTINGS: System Affiliated PM&R Group, Private Practice		

*Denotes a participant in the 2017 Institution Partners Council (IPC).

PHYSICIAN OPPORTUNITIES IN NORTH CENTRAL FLORIDA



**Join the largest multi-specialty group in
North Central Florida.**

- 100% physician owned
- Professionally managed to allow you to focus on your patients
- Compensation based on performance & value
- We provide balance between your home & work life

For more information during the conference:

Oscar DePaz, MD (352) 339-0103

After the conference:

**(352) 224-2404 or email your CV to
careers@SIMEDHealth.com**



(Advertisement)

COMPANY	REGION	BOOTH
Mount Sinai Health System New York, NY	EAST	2223
National Health Rehabilitation Edgewater, NJ	NATIONAL	2311
AREAS OF CARE: General Rehabilitation, Medical Rehabilitation, Cancer, Cardiopulmonary, Geriatric, Hospice Palliative Care, Limb Deficiency, Musculoskeletal Medicine, Spine Medicine, Sports Medicine, Neurological Rehabilitation, Stroke, Brain Injury, Spinal Cord Injury, Neuromuscular Medicine, Occupational Rehabilitation, Pain Medicine		
PRACTICE SETTINGS: Independent PM&R Group, Private Practice, Skilled Nursing Facility (SNF), Sub-Acute Care Facility		
New York Physical Medicine Center Rochester, NY	EAST	2622
AREA OF CARE: Musculoskeletal Medicine		
PRACTICE SETTING: Outpatient Clinic		
NewYork-Presbyterian Hospital (Columbia and Cornell) New York, NY	EAST	2706
AREAS OF CARE: Academic Research, General Rehabilitation, Musculoskeletal Medicine, Spine Medicine, Sports Medicine, Neurological Rehabilitation, Stroke, Pain Medicine, Pediatric Rehabilitation		
PRACTICE SETTING: System Affiliated Multi-Specialty Group		
Northwell Health Manhasset, NY	EAST	2315
AREAS OF CARE: Academic GME, Academic Research, General Rehabilitation, Medical Rehabilitation, Cancer, Cardiopulmonary, Geriatric, Hospice Palliative Care, Limb Deficiency, Musculoskeletal Medicine, Spine Medicine, Sports Medicine, Neurological Rehabilitation, Stroke, Brain Injury, Spinal Cord Injury, Neuromuscular Medicine, Occupational Rehabilitation, Pain Medicine, Pediatric Rehabilitation		
PRACTICE SETTINGS: System Affiliated PM&R Group, Private Practice, System Affiliated Multi-Specialty Group, Hospital Rehab Unit or Floor, Skilled Nursing Facility (SNF), Long-Term Acute Care (LTACH), Sub-Acute Care Facility, Outpatient Clinic, Home Health		
Norton Healthcare/Norton Medical Group	NATIONAL	2214
AREAS OF CARE: Medical Rehabilitation, Neurological Rehabilitation, Pain Medicine		
PRACTICE SETTINGS: System Affiliated PM&R Group, Private Practice		
Novus Pain Management Cumberland, MD	EAST	2113
AREA OF CARE: Pain Medicine		
PRACTICE SETTINGS: Skilled Nursing Facility (SNF), Long-Term Acute Care (LTACH), Sub-Acute Care Facility		
Ochsner Health System New Orleans, LA	SOUTH	P8
AREAS OF CARE: Academic GME, General Rehabilitation, Medical Rehabilitation, Geriatric, Limb Deficiency, Musculoskeletal Medicine, Spine Medicine, Sports Medicine, Neurological Rehabilitation, Stroke, Brain Injury, Spinal Cord Injury, Neuromuscular Medicine, Occupational Rehabilitation, Pain Medicine, Pediatric Rehabilitation		
PRACTICE SETTING: System Affiliated Multi-Specialty Group		



The Department of Physical Medicine & Rehabilitation at Northwell Health and The Zucker School of Medicine at Hofstra/Northwell is seeking BC/BE fellowship trained Physiatrists to join outpatient practices on Long Island. These positions will have a focus on outpatient musculoskeletal and spine management.

Highlights include:

- ✓ Join a team of fourteen Board Certified PM&R physicians.
- ✓ Play a key role in the Northwell Spine Center, which includes clinical, academic and research components.
- ✓ The Zucker School of Medicine at Hofstra/ Northwell Physical Medicine & Rehabilitation Residency program is comprised of twelve residents. In addition, Medical students all rotate through PM&R.
- ✓ Collaborative research opportunities are present at the Feinstein Institute for Medical Research.

Long Island, New York, a suburb of New York City, is known for our diverse communities, educational opportunities and activities. The North Shore with its historic mansions and harbor side villages, the South Shore with its renowned public beaches and sports venues, the North Fork wine and farm country, and the South Fork with its international resort areas. Wherever you roam, you'll encounter breathtaking stretches of the Atlantic Ocean or Long Island Sound, parks, preserves and historic mansions. The Hamptons and Montauk, The Gold Coast, Jones Beach, Long Beach and Fire Island; dozens of museums, historic sites (including lighthouses) and over four dozen wineries all lie within a short distance of New York City.

Northwell Health includes 21 award-winning hospitals and more than 450 community based practice locations throughout Long Island, Manhattan, Queens, Brooklyn, Staten Island and Westchester.

We offer a competitive salary and comprehensive benefits package. Physicians will be employed as members of **Northwell Physician Partners**, the fifth largest medical group in the country. Academic Appointment to The Zucker School of Medicine at Hofstra/Northwell is commensurate with credentials and experience.

*For additional information and to apply, please contact:
Kirsten Wieckhorst, Senior Physician Recruiter at Northwell Health:
kwaldvogel@northwell.edu.
Kirsten will be in the Career Fair and Exhibit Hall at the
AAPM&R Annual Meeting and can be reached at (516) 404-7312.*

COMPANY	REGION	BOOTH
Park Nicollet Health Services St. Louis Park, MN	MIDWEST	2605
AREAS OF CARE: General Rehabilitation, Medical Rehabilitation, Musculoskeletal Medicine, Spine Medicine, Sports Medicine, Neurological Rehabilitation, Neuromuscular Medicine, Occupational Rehabilitation, Pain Medicine		
PRACTICE SETTING: System Affiliated Multi-Specialty Group		
Penn State Health Hershey, PA	EAST	2414
AREAS OF CARE: General Rehabilitation, Pediatric Rehabilitation		
Phoenix Children's Hospital Phoenix, AZ	WEST	2613
AREAS OF CARE: Medical Rehabilitation, Pediatric Rehabilitation		
PRACTICE SETTINGS: Hospital Rehab Unit or Floor		
Physiatry Physicians Partners	NATIONAL	2415
AREA OF CARE: General Rehabilitation		
PRACTICE SETTING: Sub-Acute Care Facility		
Pioneer Spine & Sports Physicians West Springfield, MA	EAST	2220
AREAS OF CARE: General Rehabilitation, Musculoskeletal Medicine, Spine Medicine, Sports Medicine, Neuromuscular Medicine, Pain Medicine		
PRACTICE SETTINGS: Independent PM&R Group, Private Practice, Independent Multi-Specialty Group		
Post Acute Medical, LLC Enola, PA	NATIONAL	2604
AREAS OF CARE: General Rehabilitation, Medical Rehabilitation, Musculoskeletal Medicine, Spine Medicine, Neurological Rehabilitation, Stroke, Brain Injury, Spinal Cord Injury, Neuromuscular Medicine, Pain Medicine		
PRACTICE SETTINGS: Freestanding IRF, Hospital Rehab Unit or Floor, Skilled Nursing Facility (SNF), Long-Term Acute Care (LTACH)		
Prevea Health Green Bay, WI	MIDWEST	2224
AREAS OF CARE: General Rehabilitation, Medical Rehabilitation, Geriatric, Musculoskeletal Medicine, Spine Medicine, Neurological Rehabilitation, Stroke, Neuromuscular Medicine, Occupational Rehabilitation, Pain Medicine		
PRACTICE SETTING: System Affiliated Multi-Specialty Group		
Prospira Paincare, Inc. Roswell, GA	SOUTH	2628
AREA OF CARE: Pain Medicine		
PRACTICE SETTINGS: Independent PM&R Group, Private Practice		
Rothman Institute Philadelphia, PA	EAST	2213
AREAS OF CARE: Academic Research, Musculoskeletal Medicine, Spine Medicine, Sports Medicine, Pain Medicine		
PRACTICE SETTING: System Affiliated Solo Private Practice		



Join the TEAM

WE ARE HIRING!

Spine Team Texas is seeking
an **Interventionalist** to
join our team of specialists.

Visit us at **Booth #2201**
for more information.

Spine Team Texas is a multidisciplinary spine center with a unique, team approach that brings together skilled medical professionals to reduce pain, restore function and get patients back to life.

SpineTeamTexas.com



(Advertisement)

COMPANY	REGION	BOOTH
Rusk Rehabilitation New York, NY	EAST	2328
AREAS OF CARE: Academic GME, General Rehabilitation, Medical Rehabilitation, Musculoskeletal Medicine, Sports Medicine, Brain Injury, Pediatric Rehabilitation		
PRACTICE SETTINGS: Hospital Rehab Unit or Floor, Skilled Nursing Facility (SNF), Sub-Acute Care Facility		
Sanford Health Fargo, ND	WEST	2312
Shirley Ryan AbilityLab (formerly the Rehabilitation Institute of Chicago) Chicago, IL	MIDWEST	2305
* SIMED Gainesville, FL	SOUTH	2429
AREAS OF CARE: Musculoskeletal Medicine, Pain Medicine		
PRACTICE SETTING: Independent Multi-Specialty Group		
Southcentral Foundation Anchorage, AK	WEST	P7
AREAS OF CARE: Musculoskeletal Medicine, Spine Medicine, Pain Medicine		
PRACTICE SETTINGS: System Affiliated Multi-Specialty Group, Outpatient Clinic		
* Spaulding Rehabilitation Hospital/ Harvard Medical School Boston, MA	EAST	2515
AREAS OF CARE: Academic GME, Academic Research, General Rehabilitation, Medical Rehabilitation, Cancer, Geriatric, Limb Deficiency, Musculoskeletal Medicine, Spine Medicine, Sports Medicine, Neurological Rehabilitation, Stroke, Brain Injury, Spinal Cord Injury, Neuromuscular Medicine, Occupational Rehabilitation, Pain Medicine, Pediatric Rehabilitation		
PRACTICE SETTINGS: System Affiliated PM&R Group, Freestanding IRF, Skilled Nursing Facility (SNF), Long-Term Acute Care (LTACH), Outpatient Clinic, Home Health, Non-Clinical, VA		
Spectrum Health Grand Rapids, MI	MIDWEST	2615
PRACTICE SETTING: Outpatient Clinic		
Spine Team Texas Southlake, TX	SOUTH	2201
AREAS OF CARE: Spine Medicine, Pain Medicine		
PRACTICE SETTING: System Affiliated Multi-Specialty Group		
St. Luke's Rehabilitation Institute	NATIONAL	2523
AREAS OF CARE: Academic Research, General Rehabilitation, Medical Rehabilitation, Cancer, Cardiopulmonary, Geriatric, Musculoskeletal Medicine, Neurological Rehabilitation, Stroke, Brain Injury, Spinal Cord Injury, Neuromuscular Medicine, Occupational Rehabilitation, Pain Medicine, Pediatric Rehabilitation		
PRACTICE SETTING: Freestanding IRF		

*Denotes a participant in the 2017 Institution Partners Council (IPC).



Lewis Katz School of Medicine

The Department of Physical Medicine and Rehabilitation (PM&R) at the Lewis Katz School of Medicine at Temple University is seeking a full time Academic Physiatrist. Clinical responsibilities for this position include caring for a portion of our 16-bed inpatient acute rehabilitation unit, conducting PM&R consults in our 500-bed acute care hospital, and treatment of outpatients post discharge. Electro-diagnostic testing opportunities exist in the nursing home environment if desired.

The PM&R Department has a large and dynamic PM&R training program and a well-respected medical school. The ideal candidate will have a strong commitment to mentoring and teaching residents, excellent interpersonal and communication skills, a record of interdisciplinary collaboration, and have the desire to be integrally involved in enhancing quality of patient care.

The successful candidate will be BE/BC in PM&R and possess the credentials that will qualify for a faculty appointment at a minimum level of Assistant Professor. Candidates must also have the ability to obtain medical licensure in the Commonwealth of Pennsylvania.

Interested candidates should submit a current curriculum vita and complete contact information to the address below. Personal statements summarizing teaching experience, clinical and research interests, leadership experience and contributions to diversity are encouraged.

Michael Weinik, DO, Professor and Interim Chairperson, Department of Physical Medicine and Rehabilitation, C/O Michael R. Lester, Senior Director, Department of Physician and Faculty Recruitment and Retention, 3420 N. Broad Street, MRB 101, Philadelphia, PA 19140, Email: michael.lester@tuhs.temple.edu, Phone: 215-707-5666, Fax: 215-707-5666.

The University is especially interested in qualified candidates who can contribute through their research, teaching, and/or service to the diversity and excellence of the academic community. Lewis Katz School of Medicine at Temple University is an Affirmative Action/Equal Opportunity Employer and strongly encourages applications from women, minorities, veterans, and persons with disabilities.

COMPANY	REGION	BOOTH
Swedish Spine, Sports, and Musculoskeletal Medicine <i>Seattle, WA</i>	WEST	2110
AREAS OF CARE: Cancer, Spine Medicine		
PRACTICE SETTINGS: System Affiliated Multi-Specialty Group, Outpatient Clinic		
The Children's Center Rehabilitation Hospital <i>Bethany, OK</i>	SOUTH	2412
AREA OF CARE: Pediatric Rehabilitation		
PRACTICE SETTING: Freestanding IRF		
The Cleveland Clinic <i>Cleveland, OH</i>	MIDWEST	2307
AREAS OF CARE: Academic Research, General Rehabilitation, Medical Rehabilitation, Cancer, Cardiopulmonary, Musculoskeletal Medicine, Spine Medicine, Sports Medicine, Neurological Rehabilitation, Stroke, Brain Injury, Spinal Cord Injury, Neuromuscular Medicine, Occupational Rehabilitation, Pain Medicine, Pediatric Rehabilitation		
PRACTICE SETTING: System Affiliated Multi-Specialty Group		
Trinity Health of New England <i>Hartford, CT</i>	EAST	2215
The Spine Center at North Texas Orthopedics <i>Grapevine, TX</i>	SOUTH	2207
AREAS OF CARE: Musculoskeletal Medicine, Spine Medicine, Sports Medicine, Pain Medicine		
PRACTICE SETTINGS: Independent PM&R Group, Private Practice		
Tufts Medical Center <i>Boston, MA</i>	EAST	2704
AREAS OF CARE: Academic GME, Academic Research, General Rehabilitation, Medical Rehabilitation, Cancer, Cardiopulmonary, Geriatric, Hospice Palliative Care, Limb Deficiency, Musculoskeletal Medicine, Spine Medicine, Sports Medicine, Neurological Rehabilitation, Stroke, Brain Injury, Spinal Cord Injury, Neuromuscular Medicine, Occupational Rehabilitation, Pain Medicine, Pediatric Rehabilitation		
PRACTICE SETTINGS: System Affiliated Solo Private Practice, Independent Solo Private Practice, System Affiliated PM&R Group, Private Practice, Hospital Rehab Unit or Floor, Home Health, VA		
U.S. Healthworks	NATIONAL	2302
AREAS OF CARE: General Rehabilitation, Medical Rehabilitation, Spine Medicine, Sports Medicine, Neurological Rehabilitation, Occupational Rehabilitation, Pain Medicine		
PRACTICE SETTING: Outpatient Clinic		
U.S. Physiatry, LLC	NATIONAL	P3
AREAS OF CARE: General Rehabilitation, Medical Rehabilitation, Neurological Rehabilitation, Stroke, Brain Injury, Spinal Cord Injury		
PRACTICE SETTINGS: Independent PM&R Group, Private Practice, Freestanding IRF, Hospital Rehab Unit or Floor, Skilled Nursing Facility (SNF), Long-Term Acute Care (LTACH), Sub-Acute Care Facility		

We put
YOU
FIRST
because you put patients first.

Physiatry Opportunities in Connecticut and Massachusetts.

Trinity Health Of New England is the region's largest nonprofit health system. We are 13,000 physicians, advanced practitioners and caregivers who, like you, put our patients above all else. We are growing rapidly and have Physiatry opportunities available.

Trinity Health Of New England is proud of its history of provider collaboration. Our practice model empowers our physicians to work at their highest level, while allowing time for professional development and family life. Whether you are focused on providing outstanding patient-centered care or driven to grow into a leadership role, you will thrive at Trinity Health Of New England.

Come visit us at the AAPM&R career fair in Denver, Colorado on October 11th. We will be at booth 2215.

For more information, please call Christine Bourbeau, Regional Director, Physician & Advanced Practitioner Recruitment, Trinity Health Of New England, at 855-894-5590 today. Or email your CV and letter of interest to CBourbea@stfranciscare.org.

For details on these opportunities visit www.jointrinityne.org.

EEO-AA-M/F/D/V Pre-employment drug screening



Saint Francis Hospital and Medical Center
Mercy Medical Center
Saint Mary's Hospital
Johnson Memorial Hospital
Mount Sinai Rehabilitation Hospital

(Advertisement)

COMPANY	REGION	BOOTH
University of Missouri Columbia, MO	MIDWEST	2511
AREAS OF CARE: Academic GME, Academic Research, General Rehabilitation, Limb Deficiency, Musculoskeletal Medicine, Spine Medicine, Sports Medicine, Neurological Rehabilitation, Stroke, Brain Injury, Spinal Cord Injury, Neuromuscular Medicine, Occupational Rehabilitation, Pain Medicine, Pediatric Rehabilitation		
PRACTICE SETTINGS: System Affiliated Multi-Specialty Group, Freestanding IRF, Outpatient Clinic		
University of Nebraska Medical Center Omaha, NE	MIDWEST	2106
AREAS OF CARE: Academic GME, Cancer, Spine Medicine, Neurological Rehabilitation, Brain Injury, Pediatric Rehabilitation		
PRACTICE SETTINGS: Freestanding IRF, Outpatient Clinic		
University of Pennsylvania Philadelphia, PA	EAST	2105
AREAS OF CARE: Academic GME, Academic Research, General Rehabilitation, Medical Rehabilitation, Cancer, Hospice Palliative Care, Limb Deficiency, Musculoskeletal Medicine, Spine Medicine, Sports Medicine, Neurological Rehabilitation, Stroke, Brain Injury, Spinal Cord Injury, Neuromuscular Medicine, Occupational Rehabilitation, Pain Medicine		
PRACTICE SETTINGS: System Affiliated Multi-Specialty Group, Freestanding IRF, Hospital Rehab Unit or Floor, Outpatient Clinic		
University of Pittsburgh Medical Center Pittsburgh, PA	EAST	2402
AREAS OF CARE: Academic GME, Academic Research, General Rehabilitation, Medical Rehabilitation, Cancer, Musculoskeletal Medicine, Spine Medicine, Sports Medicine, Neurological Rehabilitation, Stroke, Brain Injury, Spinal Cord Injury, Neuromuscular Medicine, Occupational Rehabilitation, Pain Medicine, Pediatric Rehabilitation		
PRACTICE SETTINGS: Hospital Rehab Unit or Floor, Outpatient Clinic		
University of Rochester/Strong Memorial Hospital Rochester, NY	EAST	2115
AREAS OF CARE: Academic Research, General Rehabilitation, Geriatric, Spine Medicine, Stroke, Brain Injury, Spinal Cord Injury, Pediatric Rehabilitation		
PRACTICE SETTINGS: Hospital Rehab Unit or Floor, Outpatient Clinic		
University of Washington Seattle, WA	WEST	2503
AREAS OF CARE: General Rehabilitation, Medical Rehabilitation, Cancer, Musculoskeletal Medicine, Spine Medicine, Sports Medicine, Neurological Rehabilitation, Stroke, Brain Injury, Spinal Cord Injury, Pediatric Rehabilitation		
PRACTICE SETTINGS: Hospital Rehab Unit or Floor, Outpatient Clinic		

*Denotes a participant in the 2017 Institution Partners Council (IPC).



Thank You 2017
IPC Participants
www.aapmr.org/ipc

TIER 1



TIER 2



Pediatric PM&R Physician Needed Academic and Research Interest a Plus

The Children's Hospital of Michigan and University Pediatricians are looking for a Pediatric PM&R physician to join our dynamic team in the Division of PM&R. We specialize in the rehabilitation and medical management of children with cerebral palsy, brain injuries, spinal cord injuries, neuromuscular disorders, and musculoskeletal conditions.

Children's is ranked among U.S. News & World Report's 2017-18 Best Children's Hospitals, in seven pediatric specialties.

Our staff physicians provide evaluations and continuity care to patients in the outpatient clinic setting including the Myelomeningocele/Spinal cord injury clinic, MDA clinic. PM&R also performs inpatient consultations and manages the inpatient rehabilitation unit. Physicians participate on the trauma team and collaborate with neurosurgery, neurology, orthopedics, and genetics.

We are looking for a physician who is as special as our patients. If you're searching for the right opportunity at a nationally recognized place of caring, consider joining us. Candidates must be BE/BC with an active Michigan license (or in progress).

Contact Division Chief Charles Pelshaw, M.D.
at cpelshaw@dmc.org

(Advertisement)

COMPANY	REGION	BOOTH
University of Wisconsin Hospital and Clinics—Rehab Medicine Madison, WI	MIDWEST	2123
AREAS OF CARE: Academic GME, Academic Research, General Rehabilitation, Medical Rehabilitation, Cancer, Musculoskeletal Medicine, Spine Medicine, Sports Medicine, Neurological Rehabilitation, Stroke, Brain Injury, Spinal Cord Injury, Pain Medicine, Pediatric Rehabilitation		
PRACTICE SETTING: System Affiliated Multi-Specialty Group		
* UT Southwestern Medical Center Dallas, TX	SOUTH	2407
AREAS OF CARE: Academic GME, Academic Research, General Rehabilitation, Medical Rehabilitation, Cancer, Limb Deficiency, Musculoskeletal Medicine, Spine Medicine, Sports Medicine, Neurological Rehabilitation, Stroke, Brain Injury, Spinal Cord Injury, Neuromuscular Medicine, Occupational Rehabilitation, Pediatric Rehabilitation		
PRACTICE SETTINGS: System Affiliated Multi-Specialty Group, Hospital Rehab Unit or Floor, Outpatient Clinic		
Vanderbilt University Medical Center Nashville, TN	SOUTH	2514
AREAS OF CARE: Academic GME, Academic Research, General Rehabilitation, Spine Medicine, Sports Medicine, Stroke, Brain Injury, Spinal Cord Injury		
PRACTICE SETTINGS: Hospital Rehab Unit or Floor, VA		
Vibra Healthcare	NATIONAL	2521
AREAS OF CARE: Medical Rehabilitation, Neurological Rehabilitation, Stroke, Spinal Cord Injury, Occupational Rehabilitation		
PRACTICE SETTINGS: Freestanding IRF, Hospital Rehab Unit or Floor, Skilled Nursing Facility (SNF), Long-Term Acute Care (LTACH), Sub-Acute Care Facility		
Wayne State University Detroit, MI	MIDWEST	2111
AREAS OF CARE: Musculoskeletal Medicine, Stroke, Brain Injury, Spinal Cord Injury, Pain Medicine		
PRACTICE SETTINGS: System Affiliated PM&R Group, Private Practice		
WellStar Health System Marietta, GA	SOUTH	2610
AREAS OF CARE: General Rehabilitation, Medical Rehabilitation, Cancer, Cardiopulmonary, Geriatric, Limb Deficiency, Musculoskeletal Medicine, Spine Medicine, Neurological Rehabilitation, Stroke, Brain Injury, Spinal Cord Injury, Neuromuscular Medicine, Occupational Rehabilitation, Pain Medicine		
PRACTICE SETTINGS: System Affiliated Multi-Specialty Group, Hospital Rehab Unit or Floor, Long-Term Acute Care (LTACH), Outpatient Clinic		

*Denotes a participant in the 2017 Institution Partners Council (IPC).

JOB AND FELLOWSHIP FAIR MAP

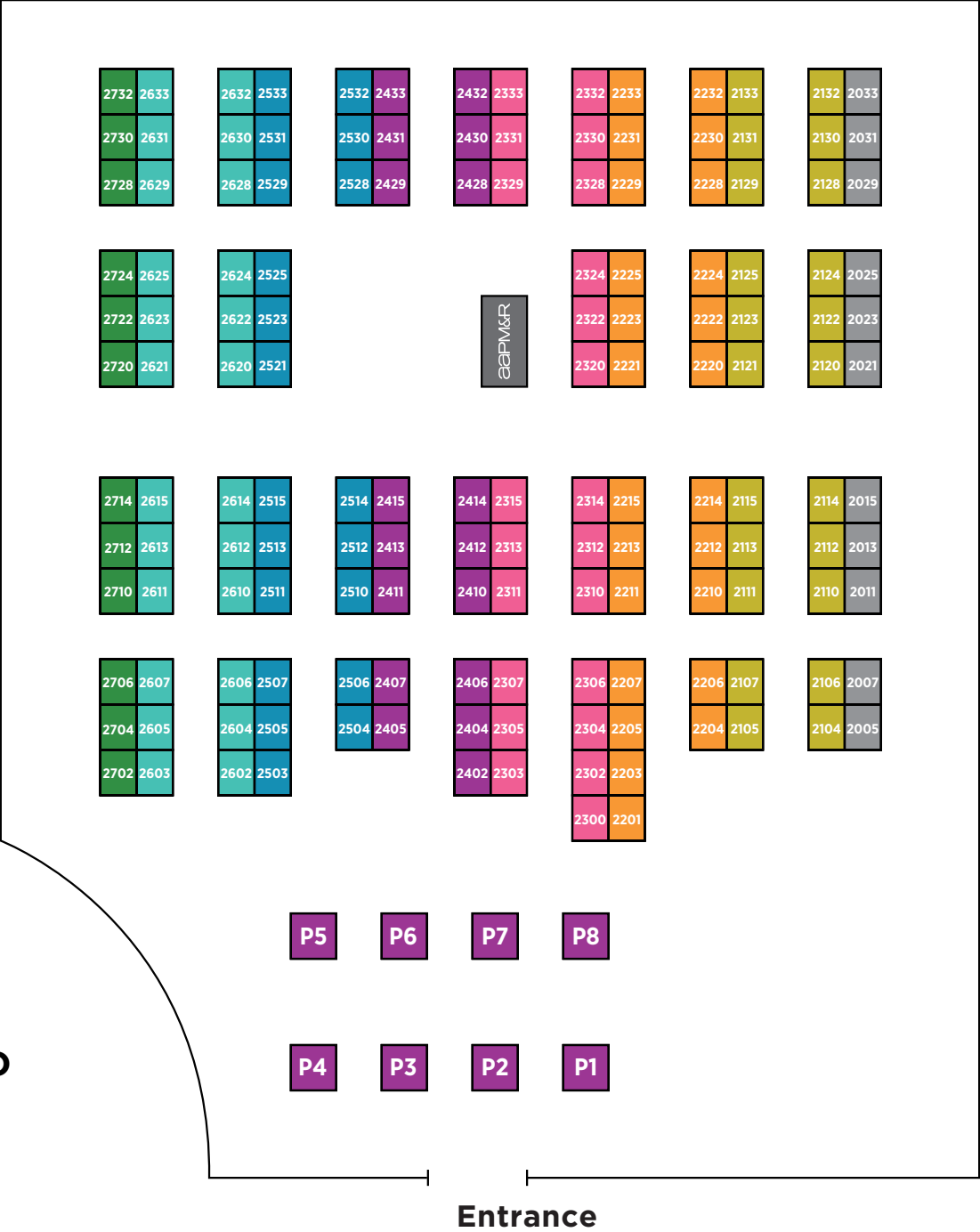


EXHIBIT HALL D

aapm&r

ANNUAL ASSEMBLY 2017

Job and
Fellowship
FAIR



Continue your career pursuits online at
jobboard.aapmr.org.

(A majority of the Job and Fellowship Fair employers are online as well.)

Learn more about Career Services
at the Career and Fellowship Corner
in the PM&R Pavilion (end of aisle 400).

#AAPMR2017



Facebook
www.facebook.com/aapmrinfo



Twitter
[@AAPMR](https://twitter.com/AAPMR)



Instagram
[@AAPMR](https://www.instagram.com/AAPMR)