

# aapm&r Registry

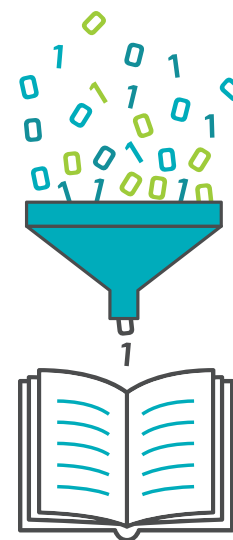
Better Practice. Better Outcomes.

## Tracking and Monitoring Patient Outcomes

The AAPM&R Registry is currently collecting data on both Low Back Pain and Ischemic Stroke, including traditional Electronic Medical Record (EMR) data and data directly from the patient via our Patient-Reported Outcomes (PRO) module. The AAPM&R Registry uses a combination of validated questionnaires with additional questions to aid clinicians at the point-of-care while also providing them with research-ready data.

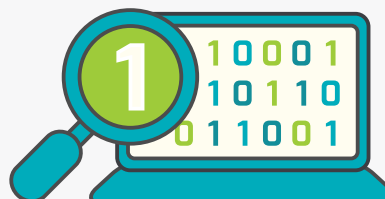
The AAPM&R Registry uses the validated Patient-Reported Outcomes Measurement Information System (PROMIS). PROMIS is a set of person-centered measures that evaluates and monitors physical, mental, and social health in adults and children. It can be used across the general population and with individuals living with chronic conditions. Since PROMIS measures were created to be relevant across all conditions for the assessing symptoms and functions, the AAPM&R Registry is using PROMIS®-29 as its core assessment tool. In addition to PROMIS®-29, the AAPM&R Registry collects answers to supplementary questions to have a holistic picture of their patients. These additional questions provide more insights into a patient’s status and will eventually aid in risk predictive modeling.

As of May 16, 2022, the AAPM&R’s Registry has collected data on 982 unique patients. Below is a snapshot of the AAPM&R Registry Low Back Pain PRO response rate. The AAPM&R Registry follows low back pain patients for up to one year after their initial visit. Follow-up surveys are conducted via email. The AAPM&R Registry Steering Committee is currently working on improving follow-up rates to increase responses and gather more patient data.



	Baseline	6-week follow-up	3-month follow-up	6-month follow-up	12-month follow-up
Low Back Pain Response	28.60%	8.64%	5.74%	7.90%	Not yet collected

PROs are an effective way to evaluate the success of clinical care and gain insight from the patient perspective. This real-world, actionable data will provide physiatrists a better understanding of their patient outcomes and allow them to demonstrate their value and improve their care.



If you are interested in joining AAPM&R's Registry or learning more, please contact [registry@aapmr.org](mailto:registry@aapmr.org).

