

aapm&r Registry

Better Practice. Better Outcomes.

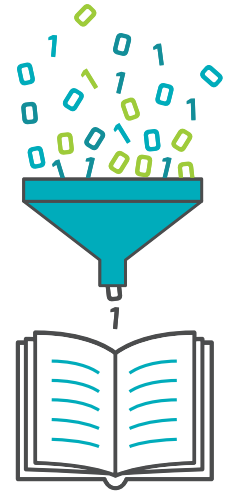
Ischemic Stroke Patient Survey

Your doctor is using an online survey to collect important information about your care. This survey is a part of the American Academy of Physical Medicine and Rehabilitation's Registry. Your answers will inform your treatment as well as the treatment for other patients like you. These questions will be used to follow your progress during the course of your care.

You will receive follow-up surveys sent to your email. It is very important for you to take a few minutes to fill-out these surveys as well.

The goal of the survey is to help improve the care you receive for your low back pain. The survey uses the PROMIS-29 questionnaire developed by the National Institute of Health (NIH) to evaluate your pain, sleep, physical and mental well-being. Your answers are stored in a confidential and HIPPA-compliant manner.

Thank you for taking the time to answer these important questions. Talk to your doctor to learn more about this survey! Turn over to see examples of patient surveys.



The American Academy of Physical Medicine and Rehabilitation (AAPM&R) is the national medical specialty organization representing more than 9,000 physicians who are specialists in physical medicine and rehabilitation (PM&R). In order to fulfill the vision of the Academy and our membership, AAPM&R built a clinical data registry.

- Physiatrists are the essential medical experts in value-based evaluation, diagnosis, and management of neuromusculoskeletal and disabling conditions.
- Physiatrists are indispensable leaders in directing rehabilitation and recovery, and in preventing injury and disease.
- Physiatrists are vital in optimizing outcomes and function early and throughout the continuum of patient care.

AAPM&R's Registry is a single repository of data which will aid the specialty by guiding efforts to reduce burnout, defend scope of practice, demonstrate value and provide data to improve patient care.

Over the course of your care, you should expect to receive a series of emails from the address ischemicstroke@aapmr.org to complete surveys. **These emails are not junk mail and you should add this email address to your safe sender list.** These emails will be sent to you during following timeframes:

- Immediately following your discharge, if you did not complete the survey before leaving.
- 1 month after your discharge
- 3 months after your discharge
- 6 months after your first visit

The following subject lines will be used to help you identify the survey emails easier:

- Invitation to Participate in an Ischemic Stroke Survey
- Reminder to Participate in an Ischemic Stroke Survey
- Follow-Up Questions about your Ischemic Stroke Survey

By filling out these surveys your doctor will be able to measure your pain, quality-of-life and additional pieces of information to assist you throughout your treatment and beyond. While we hope you participate in the surveys, we understand how busy life can get and each email includes an opt-out link, should you want to stop receiving the surveys.

Sample Email:

